

SUBDIVISION PLAN OF LOT 40, DISTRICT LOT 9261, CARIBOO DISTRICT, PLAN 11361, EXCEPT PARCEL A (67551M).

PLAN EPP42878

BCGS 93G.087

INTEGRATED SURVEY AREA No. 39, PRINCE GEORGE, NAD83 (CSRS)

THE INTENDED PLOT SIZE OF THIS PLAN IS 432mm IN WIDTH BY 560mm IN HEIGHT (C SIZE) WHEN PLOTTED AT A SCALE OF 1:750

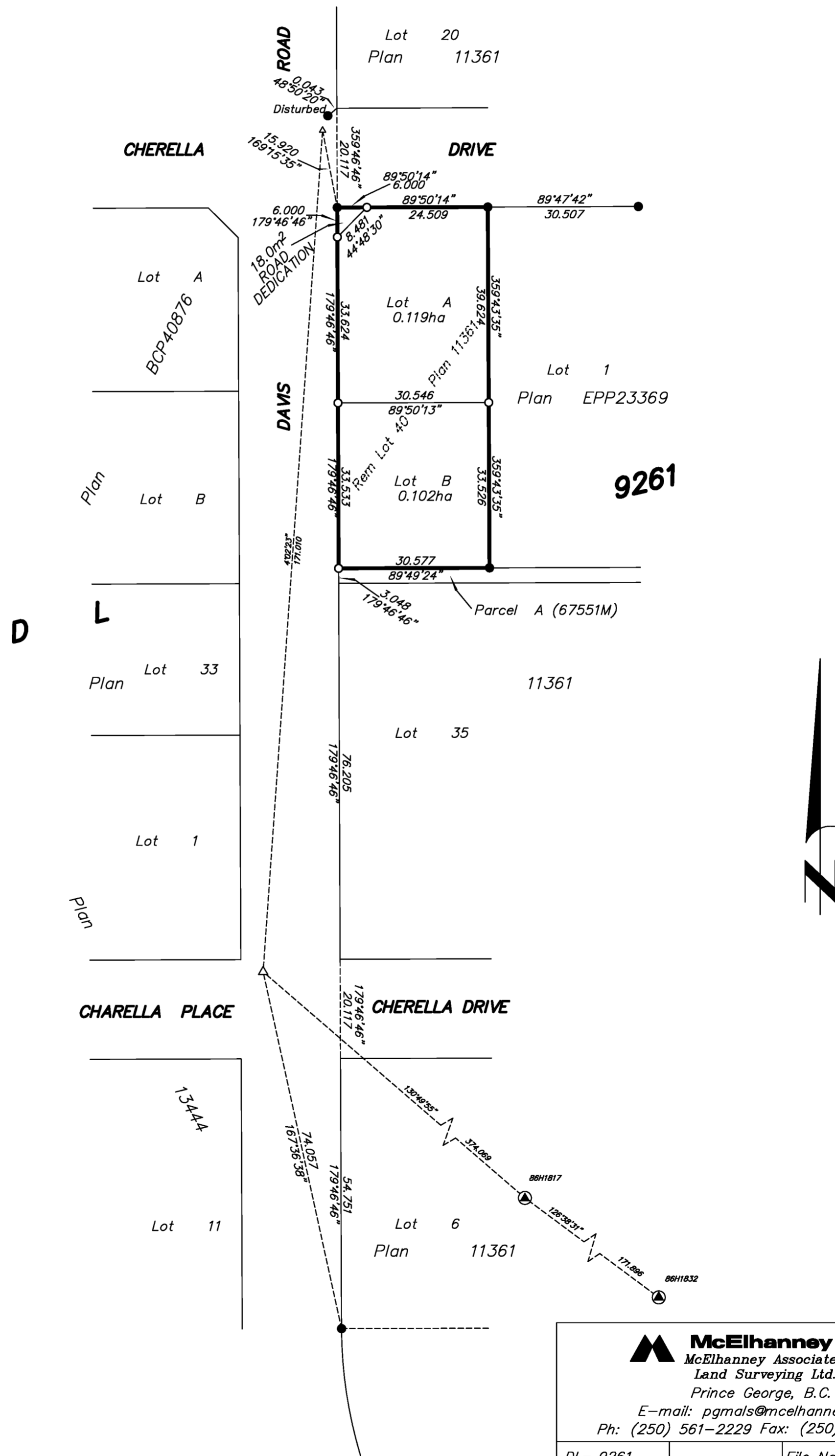
10m 0 10 20 30 50m

ALL DISTANCES ARE HORIZONTAL GROUND-LEVEL AND ARE SHOWN IN METRES AND DECIMALS THEREOF, UNLESS OTHERWISE INDICATED.

LEGEND

- STANDARD IRON POST FOUND
- STANDARD IRON POST PLACED
- ⊙ CONTROL MONUMENT FOUND
- △ TRAVERSE HUB PLACED

THIS PLAN SHOWS HORIZONTAL GROUND-LEVEL DISTANCES, UNLESS OTHERWISE SPECIFIED. TO COMPUTE GRID DISTANCES, MULTIPLY GROUND-LEVEL DISTANCES BY THE AVERAGE COMBINED FACTOR OF 0.999026 WHICH HAS BEEN DERIVED FROM 86H1817 AND 86H1832.



THIS PLAN LIES WITHIN THE JURISDICTION OF THE APPROVING OFFICER FOR THE CITY OF PRINCE GEORGE. CPG File: SD100455

THE FIELD SURVEY REPRESENTED BY THIS PLAN WAS COMPLETED ON THE 7th DAY OF JULY, 2014. DALE KEOWN, BCLS 468

THIS PLAN LIES WITHIN THE REGIONAL DISTRICT OF FRASER - FORT GEORGE.

McElhanney
 McElhanney Associates
 Land Surveying Ltd.
 Prince George, B.C.
 E-mail: pgmals@mcelhanney.com
 Ph: (250) 561-2229 Fax: (250) 563-1941

DL- 9261	File No. - 6229-S
CPG File No. SD100455	