


REFERENCE PLAN OF CONSOLIDATION OF LOTS 1 AND 2, BLOCK 195, DISTRICT LOT 343, CARIBOO DISTRICT, PLAN 1268 AND PARCEL A, DISTRICT LOT 343, CARIBOO DISTRICT, PLAN PGP35927.

PLAN EPP42717

PURSUANT TO SECTION 100(1)(b) OF THE LAND TITLE ACT.

BCGS 93G.097

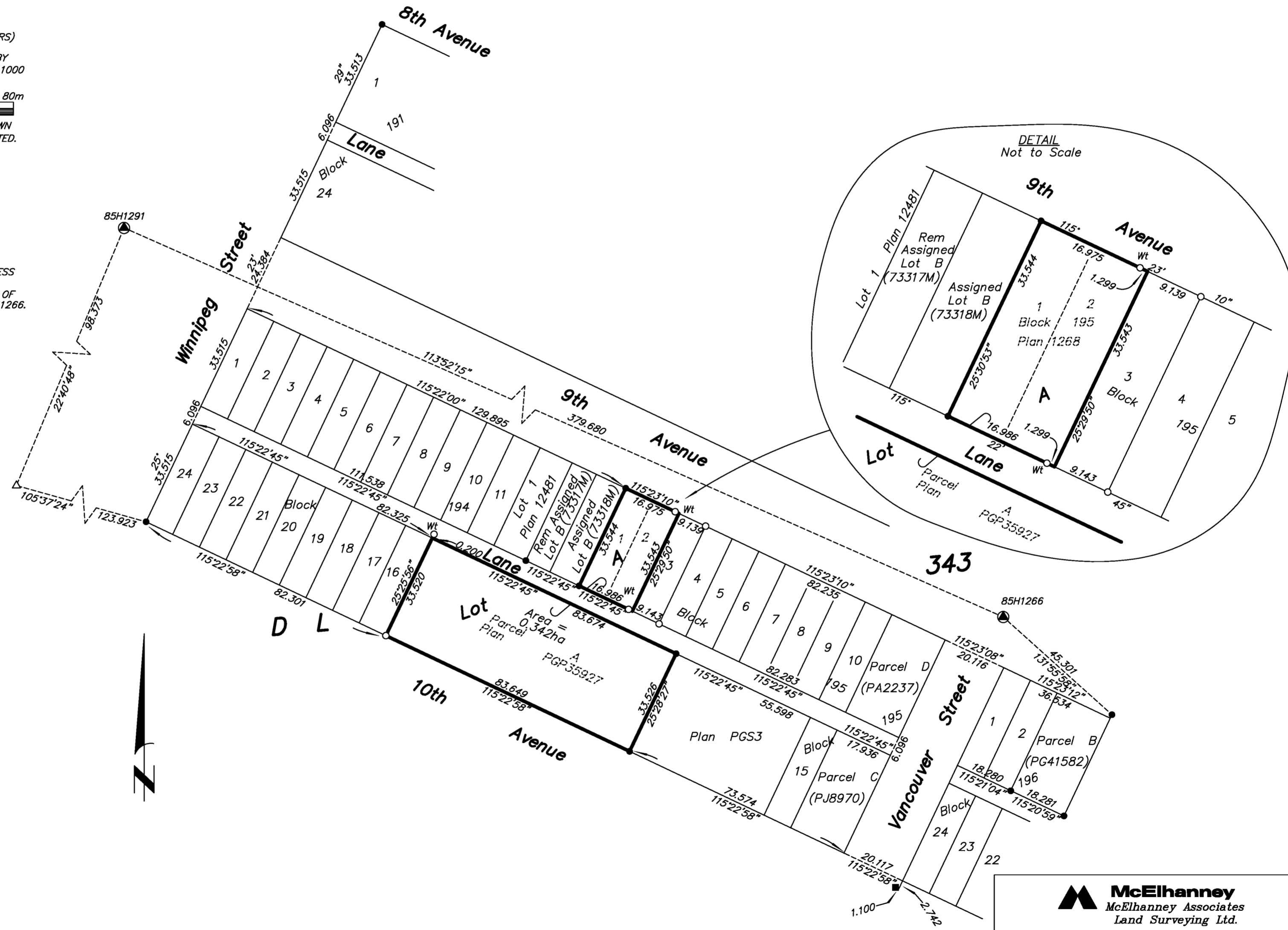
INTEGRATED SURVEY AREA No. 39, PRINCE GEORGE, NAD83 (CSRS)
THE INTENDED PLOT SIZE OF THIS PLAN IS 560mm IN WIDTH BY
432mm IN HEIGHT (C SIZE) WHEN PLOTTED AT A SCALE OF 1:1000

ALL DISTANCES ARE HORIZONTAL GROUND-LEVEL AND ARE SHOWN
IN METRES AND DECIMALS THEREOF, UNLESS OTHERWISE INDICATED.

LEGEND

- CONTROL MONUMENT FOUND
- LEAD PLUG FOUND
- STANDARD IRON POST FOUND
- STANDARD IRON POST PLACED
- △ TRAVERSE HUB PLACED

THIS PLAN SHOWS HORIZONTAL GROUND-LEVEL DISTANCES, UNLESS OTHERWISE SPECIFIED. TO COMPUTE GRID DISTANCES, MULTIPLY GROUND-LEVEL DISTANCES BY THE AVERAGE COMBINED FACTOR OF 0.999515 WHICH HAS BEEN DERIVED FROM 85H1291 AND 85H1266.

NOTE: THIS PLAN SHOWS ONE OR MORE WITNESS POSTS WHICH ARE NOT SET ON THE TRUE CORNER(S).



THIS PLAN LIES WITHIN THE JURISDICTION OF THE APPROVING OFFICER FOR THE CITY OF PRINCE GEORGE.

THE FIELD SURVEY REPRESENTED BY THIS PLAN WAS COMPLETED ON THE 27th DAY OF JUNE, 2014. DALE KEOWN, BCLS 468

THIS PLAN LIES WITHIN THE REGIONAL DISTRICT OF FRASER - FORT GEORGE.

McElhanney
McElhanney Associates
Land Surveying Ltd.
Prince George, B.C.
E-mail: pgmals@mcelhanney.com
Ph: (250) 561-2229 Fax: (250) 563-1941

DL - 343	File No. - 6222-CON
----------	---------------------