

**SUBDIVISION PLAN OF LOT B,
DISTRICT LOT 4047, CARIBOO DISTRICT,
PLAN 24040 EXCEPT PLAN 29887.**

PLAN EPP42686

PURSUANT TO SECTION 67 OF THE LAND TITLE ACT.

BCGS 93G.097

INTEGRATED SURVEY AREA No. 39, PRINCE GEORGE, NAD83 (CSRS)
THE INTENDED PLOT SIZE OF THIS PLAN IS 560mm IN WIDTH BY
432mm IN HEIGHT (C SIZE) WHEN PLOTTED AT A SCALE OF 1:500

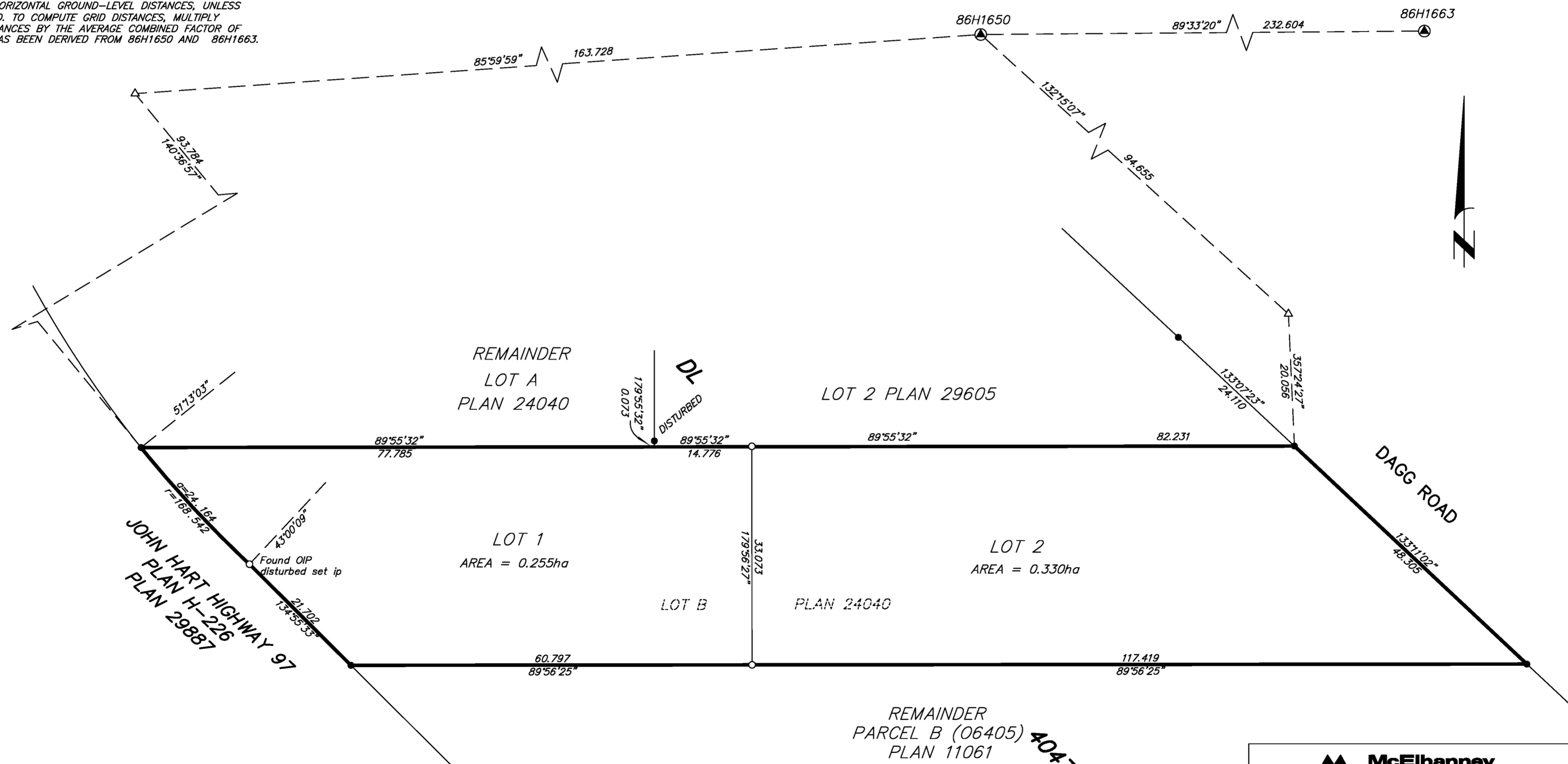
10m 0 10 20 30 40m

ALL DISTANCES ARE HORIZONTAL GROUND-LEVEL AND ARE SHOWN
IN METRES AND DECIMALS THEREOF, UNLESS OTHERWISE INDICATED.

LEGEND

- ⊙ CONTROL MONUMENT FOUND
- STANDARD IRON POST FOUND
- STANDARD IRON POST PLACED
- △ TRAVERSE HUB PLACED

THIS PLAN SHOWS HORIZONTAL GROUND-LEVEL DISTANCES, UNLESS
OTHERWISE SPECIFIED. TO COMPUTE GRID DISTANCES, MULTIPLY
GROUND-LEVEL DISTANCES BY THE AVERAGE COMBINED FACTOR OF
0.9994870 WHICH HAS BEEN DERIVED FROM 86H1650 AND 86H1663.



THIS PLAN LIES WITHIN THE JURISDICTION OF THE
APPROVING OFFICER FOR THE CITY OF PRINCE GEORGE.
CPG File: SD100439

THE FIELD SURVEY REPRESENTED BY THIS PLAN
WAS COMPLETED ON THE 27th DAY OF JUNE, 2014.
DALE KEOWN, BCLS 468

THIS PLAN LIES WITHIN THE REGIONAL DISTRICT OF FRASER - FORT GEORGE.

REMAINDER
PARCEL B (06405) **4047**
PLAN 11061

 McElhanney McElhanney Associates Land Surveying Ltd. Prince George, B.C. E-mail: pgmals@mcelhanney.com Ph: (250) 561-2229 Fax: (250) 563-1941	
DL - 4047	File No. - 6213-S