

**REFERENCE PLAN OF STATUTORY RIGHT OF WAY  
WITHIN SOUTH WEST 1/4, DISTRICT LOT 4028,  
CARIBOO DISTRICT, EXCEPT PLANS H226, 26531,  
PGP37520, PGP40312, PGP41662, 29887  
AND EPP42339.**

**PLAN EPP42678**

PURSUANT TO SECTION 113 OF THE LAND TITLE ACT.

BCGS 93G.097

INTEGRATED SURVEY AREA No. 39, PRINCE GEORGE, NAD83 (CSRS)  
THE INTENDED PLOT SIZE OF THIS PLAN IS 432mm IN WIDTH BY  
560mm IN HEIGHT (C SIZE) WHEN PLOTTED AT A SCALE OF 1:500

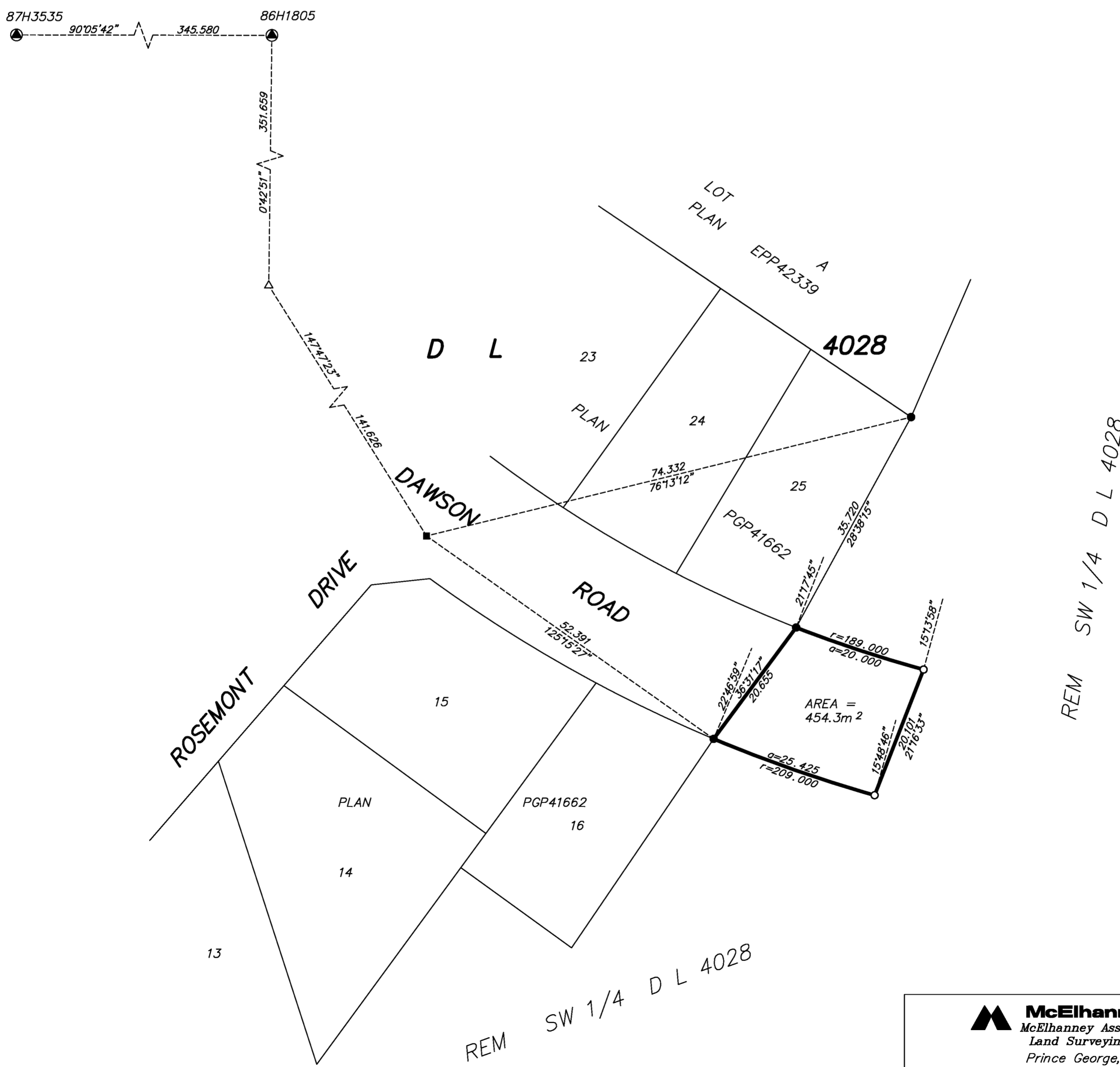


ALL DISTANCES ARE HORIZONTAL GROUND-LEVEL AND ARE SHOWN  
IN METRES AND DECIMALS THEREOF, UNLESS OTHERWISE INDICATED.

**LEGEND**

- LEAD PLUG FOUND
- STANDARD IRON POST FOUND
- STANDARD IRON POST PLACED
- ⊙ CONTROL MONUMENT FOUND
- △ TRAVERSE HUB PLACED

THIS PLAN SHOWS HORIZONTAL GROUND-LEVEL DISTANCES, UNLESS  
OTHERWISE SPECIFIED. TO COMPUTE GRID DISTANCES, MULTIPLY  
GROUND-LEVEL DISTANCES BY THE AVERAGE COMBINED FACTOR OF  
0.9995022 WHICH HAS BEEN DERIVED FROM 87H3535 AND 86H1805.



THE FIELD SURVEY REPRESENTED BY THIS PLAN  
WAS COMPLETED ON THE 3rd DAY OF JULY, 2014.  
DALE KEOWN, BCLS 468

THIS PLAN LIES WITHIN THE REGIONAL DISTRICT OF FRASER - FORT GEORGE.

**McElhanney**  
McElhanney Associates  
Land Surveying Ltd.  
Prince George, B.C.  
E-mail: pgmals@mcelhanney.com  
Ph: (250) 561-2229 Fax: (250) 563-1941

DL- 4028	File No. - 6224-RW
----------	--------------------