

SUBDIVISION PLAN OF PART OF THE SOUTH WEST 1/4, DISTRICT LOT 4028, CARIBOO DISTRICT, EXCEPT PLANS H226, 26531, PGP37520, PGP40312, PGP41662 AND 29887.

PLAN EPP42339

BCGS 93G.097

THIS PLAN LIES WITHIN INTEGRATED SURVEY AREA No. 39, PRINCE GEORGE, NADB3 (CSRS)

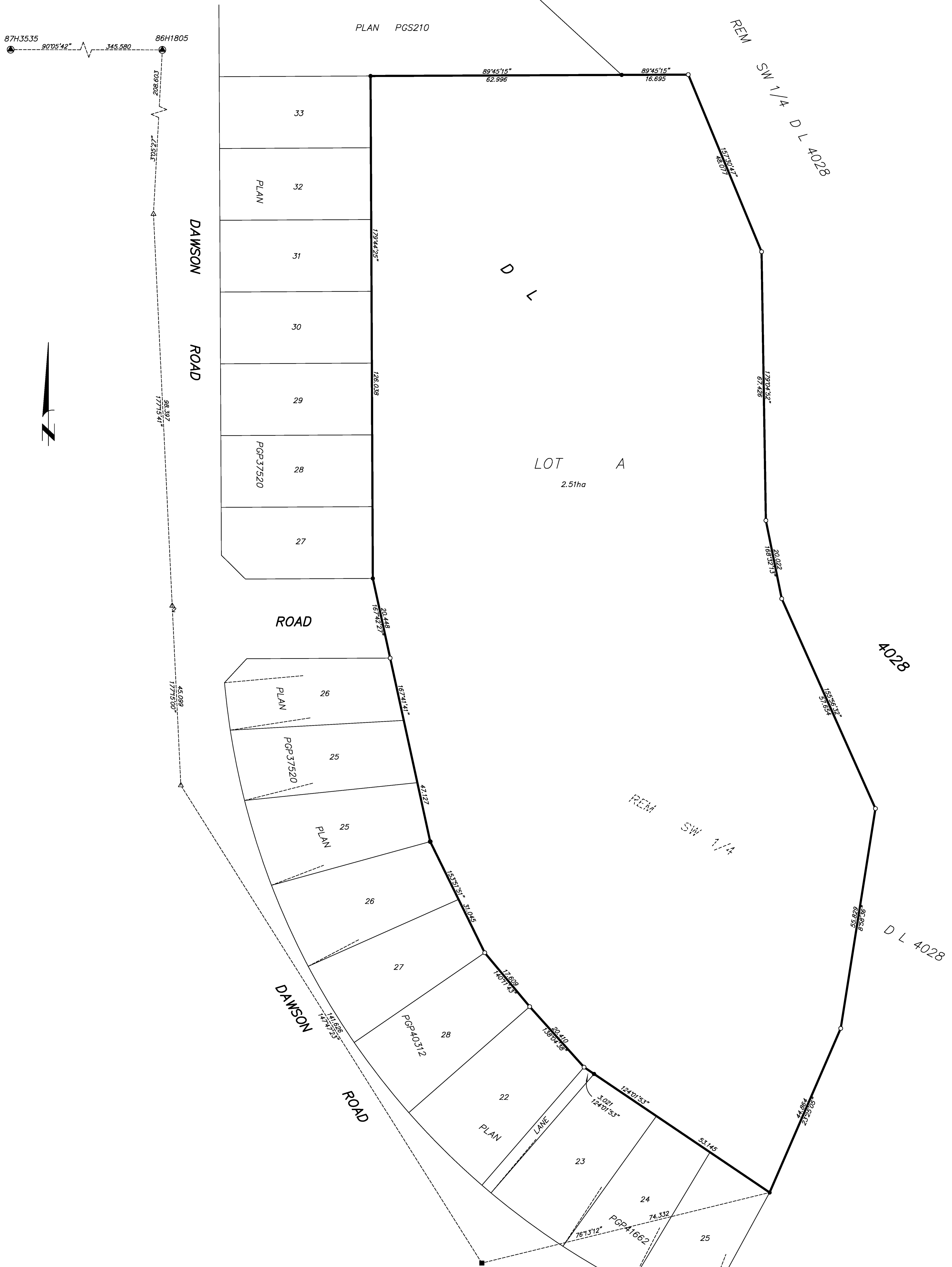
THE INTENDED PLOT SIZE OF THIS PLAN IS 864mm IN WIDTH BY 560mm IN HEIGHT (O SIZE) WHEN PLOTTED AT A SCALE OF 1:500



ALL DISTANCES ARE HORIZONTAL GROUND-LEVEL AND ARE SHOWN IN METRES AND DECIMALS THEREOF, UNLESS OTHERWISE INDICATED.

- LEGEND**
- Standard Lead Plug Found
 - Standard Iron Post Found
 - Standard Iron Post Placed
 - Control Monument Found

THIS PLAN SHOWS HORIZONTAL GROUND-LEVEL DISTANCES UNLESS OTHERWISE SPECIFIED. TO COMPUTE GRID DISTANCES, MULTIPLY GROUND-LEVEL DISTANCES BY THE AVERAGE COMBINED FACTOR OF 0.9995022 WHICH HAS BEEN DERIVED FROM 86H1805 AND 87H3535.



THIS PLAN LIES WITHIN THE JURISDICTION OF THE APPROVING OFFICER FOR THE CITY OF PRINCE GEORGE. CPG File: SD100457

THE FIELD SURVEY REPRESENTED BY THIS PLAN WAS COMPLETED ON THE 19th DAY OF JUNE, 2014. DALE KEOWN, BCLS 488

THIS PLAN LIES WITHIN THE REGIONAL DISTRICT OF FRASER - FORT GEORGE.

McElhanney Associates
 Land Surveying Ltd.
 Prince George, B.C.
 E-mail: pgmals@mcElhanney.com
 Ph: (250) 561-2229 Fax: (250) 563-1941

DL - 4028	File No. - 6224
-----------	-----------------