

REFERENCE PLAN OF STATUTORY RIGHT OF WAY WITHIN LOT 28, DISTRICT LOT 1433, CARIBOO DISTRICT, PLAN EPP42273.

PLAN EPP42276

PURSUANT TO SECTION 113 OF THE LAND TITLE ACT.

BCGS 93G.087

THIS PLAN LIES WITHIN INTEGRATED SURVEY
AREA No. 39, PRINCE GEORGE, NAD83 (CSRS)

THE INTENDED PLOT SIZE OF THIS PLAN IS 560mm IN WIDTH BY
432mm IN HEIGHT (C SIZE) WHEN PLOTTED AT A SCALE OF 1:750

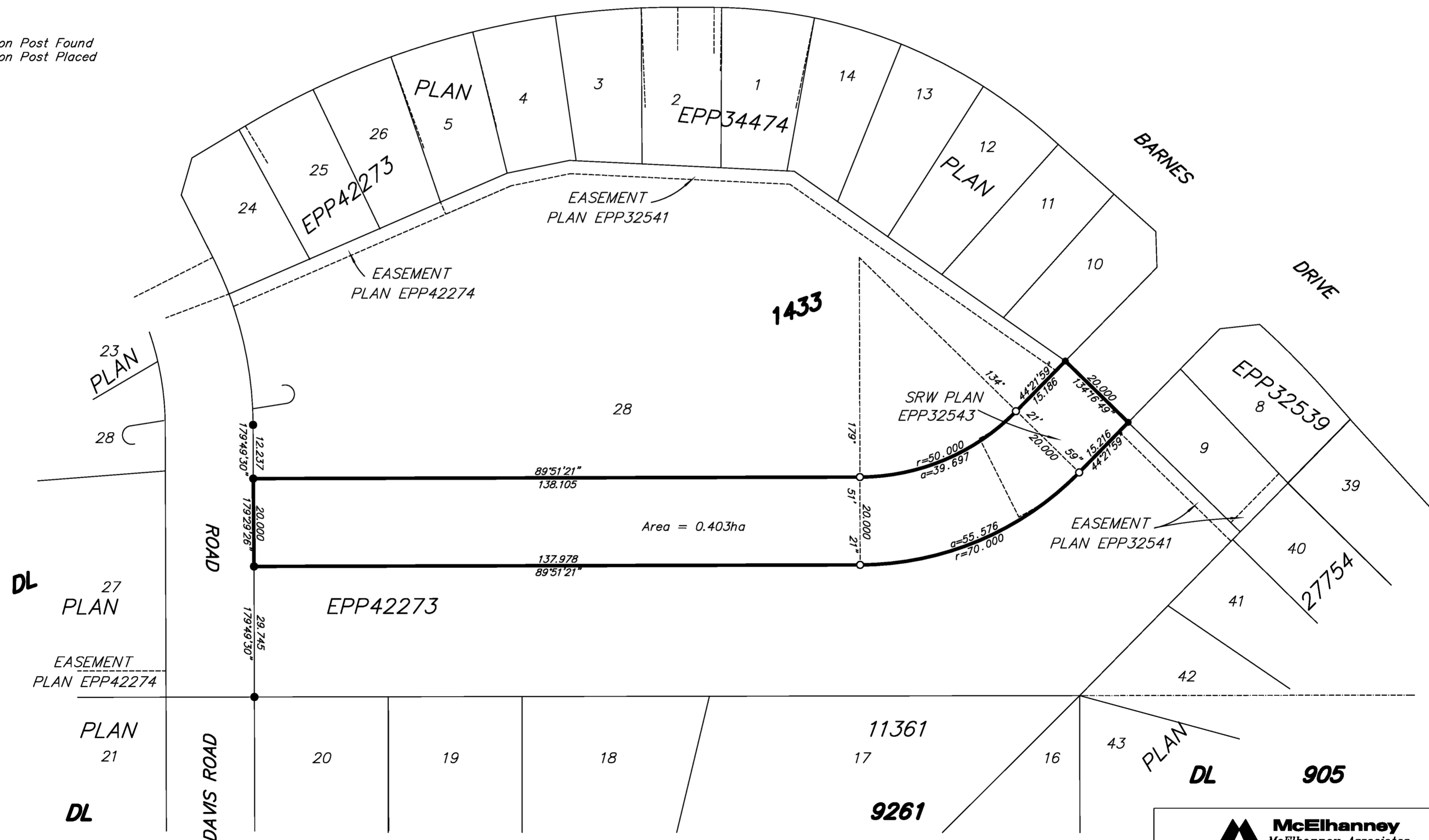
10m 0 10 20 30 50m

ALL DISTANCES ARE HORIZONTAL GROUND-LEVEL AND ARE SHOWN
IN METRES AND DECIMALS THEREOF, UNLESS OTHERWISE INDICATED.

GRID BEARINGS ARE DERIVED FROM PREVIOUSLY
INTEGRATED PLAN EPP42273.

LEGEND

- Standard Iron Post Found
- Standard Iron Post Placed



THE FIELD SURVEY REPRESENTED BY THIS PLAN
WAS COMPLETED ON THE 22th DAY OF OCTOBER, 2014.
DALE KEOWN, BCLS

THIS PLAN LIES WITHIN THE REGIONAL DISTRICT OF FRASER - FORT GEORGE.

McElhanney
McElhanney Associates
Land Surveying Ltd.
Prince George, B.C.

E-mail: pgmals@mcelhanney.com
Ph: (250) 561-2229 Fax: (250) 563-1941

DL- 1433 File No. - 6200-RW