

**REFERENCE PLAN TO ACCOMPANY A COVENANT OVER PARTS OF LOTS 1 TO 13 INCLUSIVE, DISTRICT LOT 1433, CARIBOO DISTRICT, PLAN EPP42273.**

PLAN EPP42275

BCGS 93G.087

PURSUANT TO SECTION 99(1)(e) OF THE LAND TITLE ACT.

INTEGRATED SURVEY AREA No. 39, PRINCE GEORGE, NAD83 (CSRS)

GRID BEARINGS ARE DERIVED FROM PREVIOUSLY INTEGRATED PLAN EPP42273.

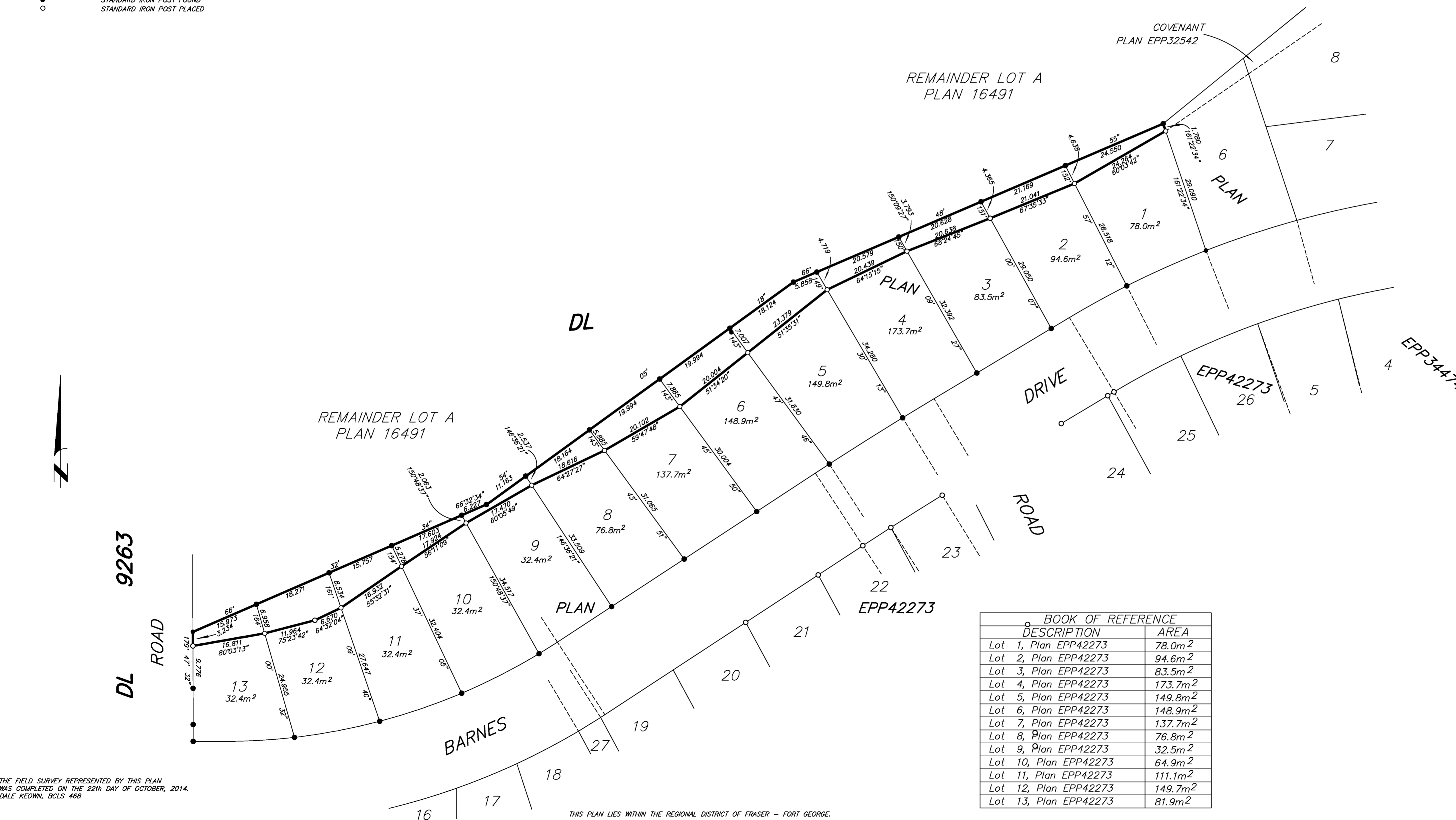
THE INTENDED PLOT SIZE OF THIS PLAN IS 864mm IN WIDTH BY 580mm IN HEIGHT (D SIZE) WHEN PLOTTED AT A SCALE OF 1:500

ALL DISTANCES ARE HORIZONTAL GROUND-LEVEL AND ARE SHOWN IN METRES AND DECIMALS THEREOF, UNLESS OTHERWISE INDICATED.

GRID BEARINGS ARE DERIVED FROM PREVIOUSLY INTEGRATED PLAN EPP42273.

LEGEND

- STANDARD IRON POST FOUND
- STANDARD IRON POST PLACED



BOOK OF REFERENCE	
DESCRIPTION	AREA
Lot 1, Plan EPP42273	78.0m <sup>2</sup>
Lot 2, Plan EPP42273	94.6m <sup>2</sup>
Lot 3, Plan EPP42273	83.5m <sup>2</sup>
Lot 4, Plan EPP42273	173.7m <sup>2</sup>
Lot 5, Plan EPP42273	149.8m <sup>2</sup>
Lot 6, Plan EPP42273	148.9m <sup>2</sup>
Lot 7, Plan EPP42273	137.7m <sup>2</sup>
Lot 8, Plan EPP42273	76.8m <sup>2</sup>
Lot 9, Plan EPP42273	32.5m <sup>2</sup>
Lot 10, Plan EPP42273	64.9m <sup>2</sup>
Lot 11, Plan EPP42273	111.1m <sup>2</sup>
Lot 12, Plan EPP42273	149.7m <sup>2</sup>
Lot 13, Plan EPP42273	81.9m <sup>2</sup>

THE FIELD SURVEY REPRESENTED BY THIS PLAN WAS COMPLETED ON THE 22th DAY OF OCTOBER, 2014. DALE KEOWN, BCLS 468

THIS PLAN LIES WITHIN THE REGIONAL DISTRICT OF FRASER - FORT GEORGE.

**McElhanney**  
 McElhanney Associates  
 Land Surveying Ltd.  
 Prince George, B.C.  
 E-mail: pgmals@mcelhanney.com  
 Ph: (250) 561-2229 Fax: (250) 563-1941

DL- 1433	File No. - 6200-COV
----------	---------------------