

**REFERENCE PLAN OF EASEMENT OVER PART OF LOTS 15 to 19 INCLUSIVE,
LOTS 23, 27 AND 28, DISTRICT LOT 1433, CARIBOO DISTRICT, PLAN EPP42273**

PURSUANT TO SECTION 99(1)(e) OF THE LAND TITLE ACT.

BCGS 93G.087

INTEGRATED SURVEY AREA No. 39, PRINCE GEORGE, NAD83 (CSRS)

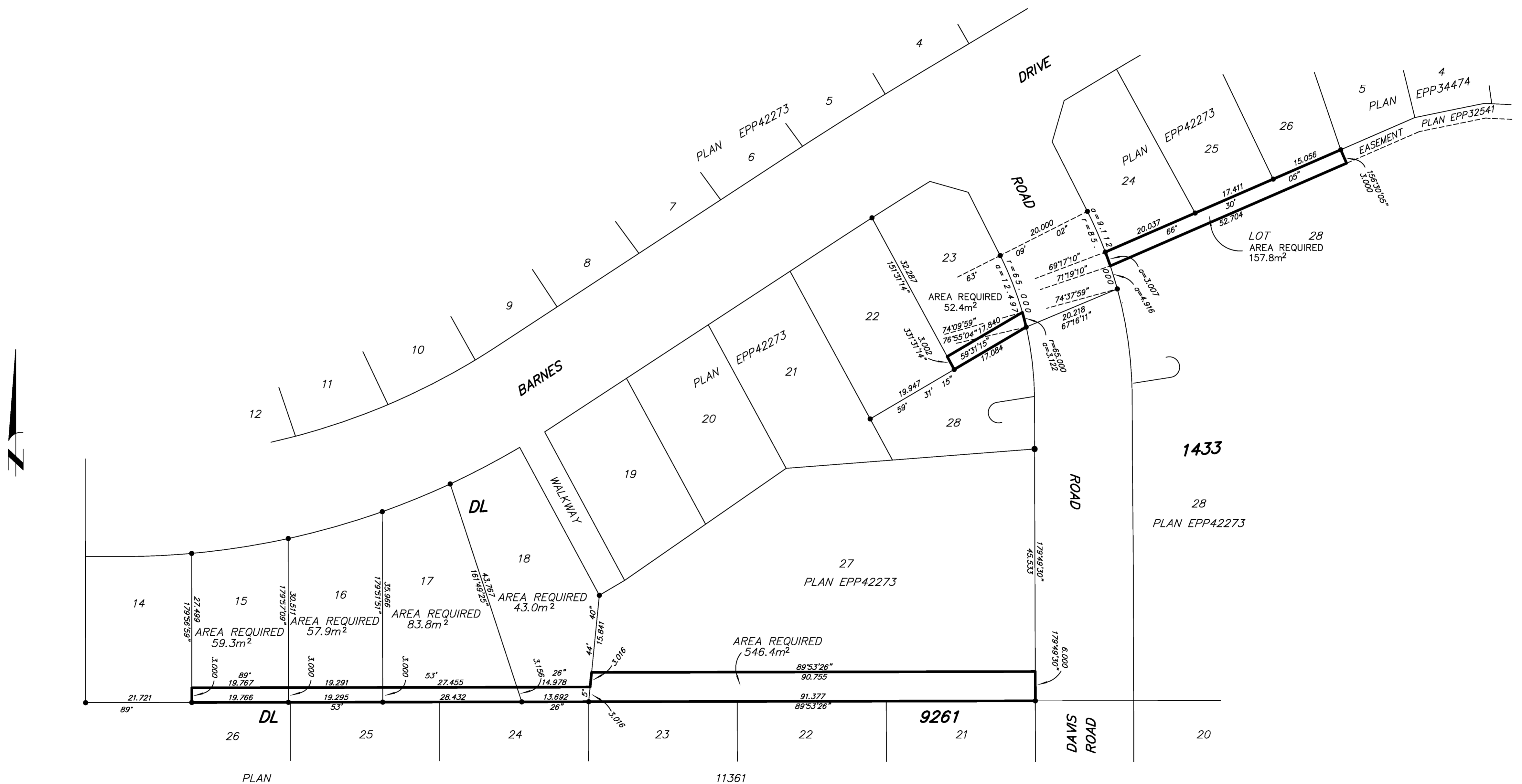
THE INTENDED PLOT SIZE OF THIS PLAN IS 560mm IN WIDTH BY 432mm IN HEIGHT (C SIZE) WHEN PLOTTED AT A SCALE OF 1:500

ALL DISTANCES ARE HORIZONTAL GROUND-LEVEL AND ARE SHOWN IN METRES AND DECIMALS THEREOF, UNLESS OTHERWISE INDICATED.

GRID BEARINGS ARE DERIVED FROM PREVIOUSLY INTEGRATED PLAN EPP42273.

LEGEND

- Standard Iron Post Found



THE FIELD SURVEY REPRESENTED BY THIS PLAN WAS COMPLETED ON THE 22th DAY OF OCTOBER, 2014. DALE KEOWN, B.C.S. 468

THIS PLAN LIES WITHIN THE REGIONAL DISTRICT OF FRASER - FORT GEORGE.

McElhanney
 McElhanney Associates
 Land Surveying Ltd.
 Prince George, B.C.
 E-mail: pgmols@mcElhanney.com
 Ph: (250) 561-2229 Fax: (250) 563-1941

DL- 1433	File No. - 6200-E
----------	-------------------

EASEMENT CA4135865 OVER LOT 27, PLAN EPP42273 AS SHOWN ON PLAN EPP42274
EASEMENT CA4135866 OVER LOT 18, PLAN EPP42273 AS SHOWN ON PLAN EPP42274
EASEMENT CA4135867 OVER LOT 17, PLAN EPP42273 AS SHOWN ON PLAN EPP42274
EASEMENT CA4135868 OVER LOT 16, PLAN EPP42273 AS SHOWN ON PLAN EPP42274
EASEMENT CA4135869 OVER LOT 15, PLAN EPP42273 AS SHOWN ON PLAN EPP42274