

**SUBDIVISION PLAN OF LOT 1, PLAN EPP13191,
EXCEPT PLANS EPP32539 AND EPP34474, AND
LOT B, PLAN 16491, ALL IN DISTRICT LOT 1433,
CARIBOO DISTRICT.**

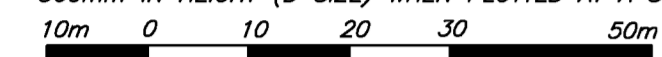
PLAN EPP42273

BCGS 93G.087

THIS PLAN LIES WITHIN INTEGRATED SURVEY
AREA No. 39, PRINCE GEORGE, NAD83 (CSRS)

GRID BEARINGS ARE DERIVED FROM OBSERVATIONS BETWEEN
GEODETIC CONTROL MONUMENTS 86H1817 AND 86H1544.

THE INTENDED PLOT SIZE OF THIS PLAN IS 864mm IN WIDTH BY
560mm IN HEIGHT (D SIZE) WHEN PLOTTED AT A SCALE OF 1:750

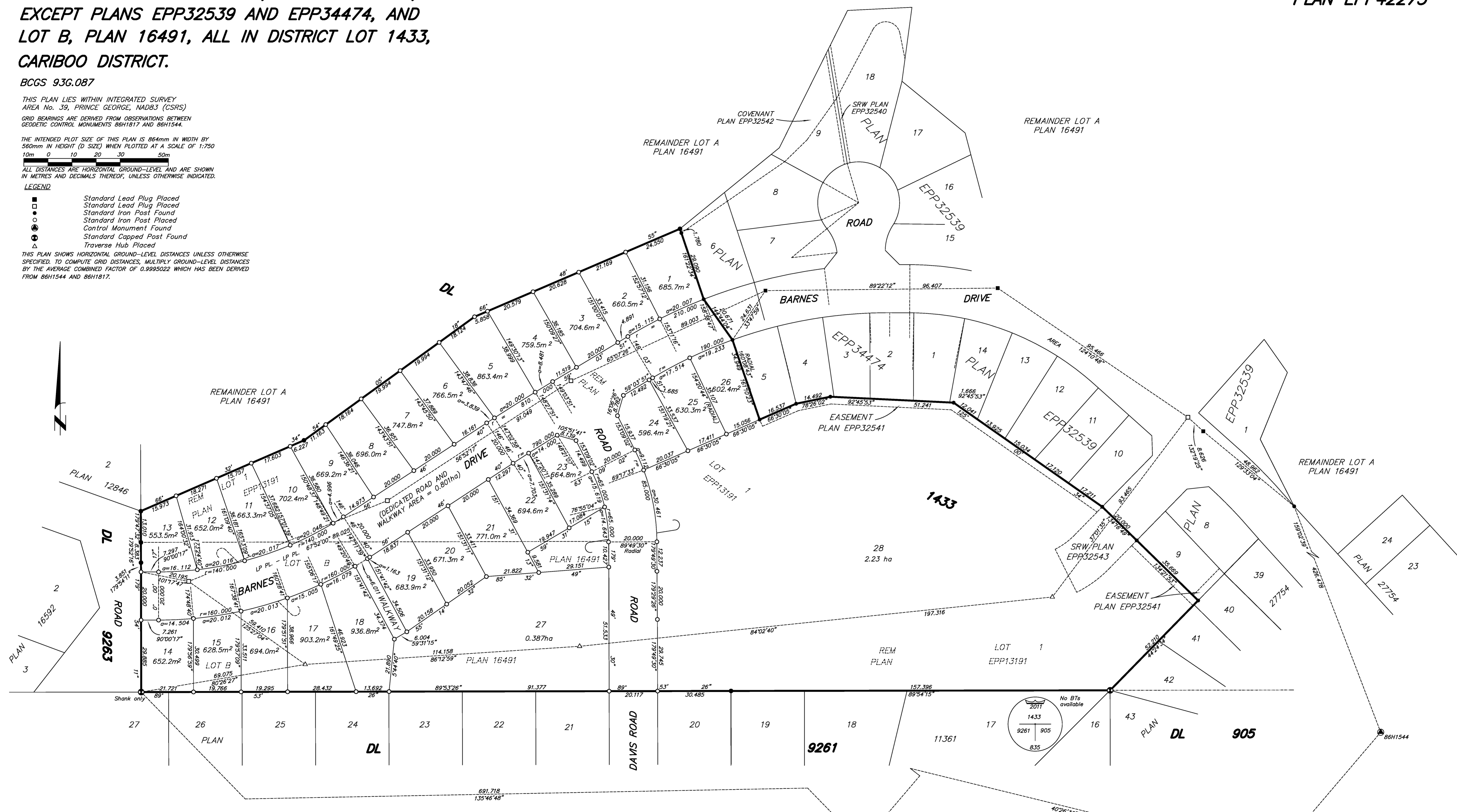


ALL DISTANCES ARE HORIZONTAL GROUND-LEVEL AND ARE SHOWN
IN METRES AND DECIMALS THEREOF, UNLESS OTHERWISE INDICATED.

LEGEND

- Standard Lead Plug Placed
- Standard Lead Plug Placed
- Standard Iron Post Found
- Standard Iron Post Placed
- ⊙ Control Monument Found
- ⊕ Standard Capped Post Found
- △ Traverse Hub Placed

THIS PLAN SHOWS HORIZONTAL GROUND-LEVEL DISTANCES UNLESS OTHERWISE
SPECIFIED. TO COMPUTE GRID DISTANCES, MULTIPLY GROUND-LEVEL DISTANCES
BY THE AVERAGE COMBINED FACTOR OF 0.9995022 WHICH HAS BEEN DERIVED
FROM 86H1544 AND 86H1817.

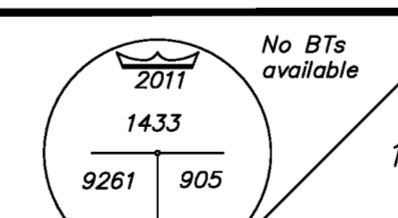


A COVENANT IN THE NAME OF CITY OF PRINCE GEORGE PURSUANT TO
SECTION 219 IS A CONDITION OF APPROVAL FOR SUBDIVISION.

THIS PLAN LIES WITHIN THE JURISDICTION OF THE
APPROVING OFFICER FOR THE CITY OF PRINCE GEORGE.
CPG File: SD100449

THE FIELD SURVEY REPRESENTED BY THIS PLAN
WAS COMPLETED ON THE 22nd DAY OF OCTOBER, 2014.
DALE KEOWN, BOLS 488

THIS PLAN LIES WITHIN THE REGIONAL DISTRICT OF FRASER - FORT GEORGE.



McElhanney
McElhanney Associates
Land Surveying Ltd.
Prince George, B.C.
E-mail: pgmols@mcElhanney.com
Ph: (250) 561-2229 Fax: (250) 563-1941

DL- 1433	File No. - 6200-S1
----------	--------------------

CPG File No. SD100449