

**SUBDIVISION PLAN OF LOT 1,
DISTRICT LOT 2424, CARIBOO DISTRICT,
PLAN 14886**

PLAN EPP42056

BCGS 93J.006

INTEGRATED SURVEY AREA No. 39, PRINCE GEORGE, NAD83 (CSRS)

THE INTENDED PLOT SIZE OF THIS PLAN IS 864mm IN WIDTH BY 580mm IN HEIGHT (D SIZE) WHEN PLOTTED AT A SCALE OF 1:750



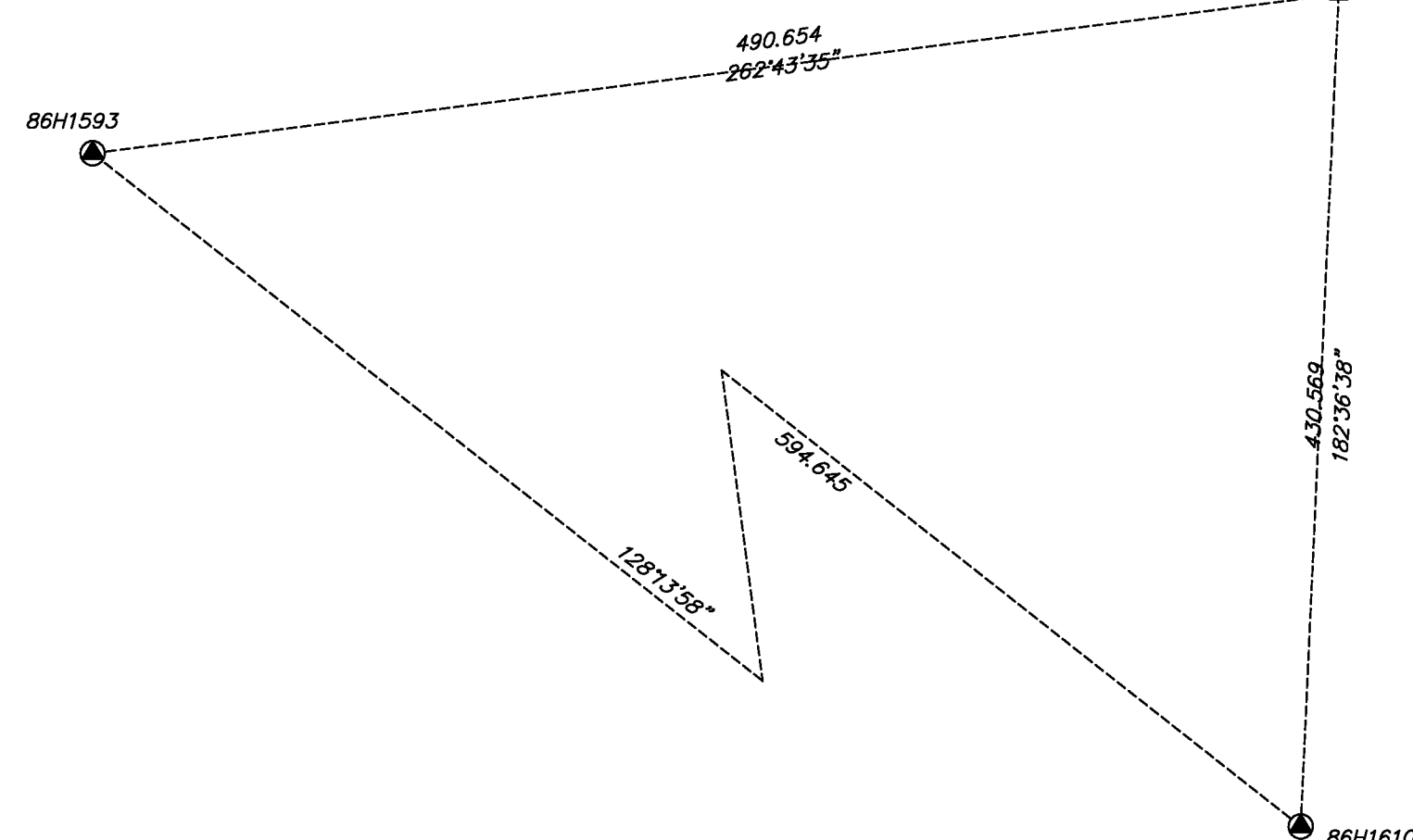
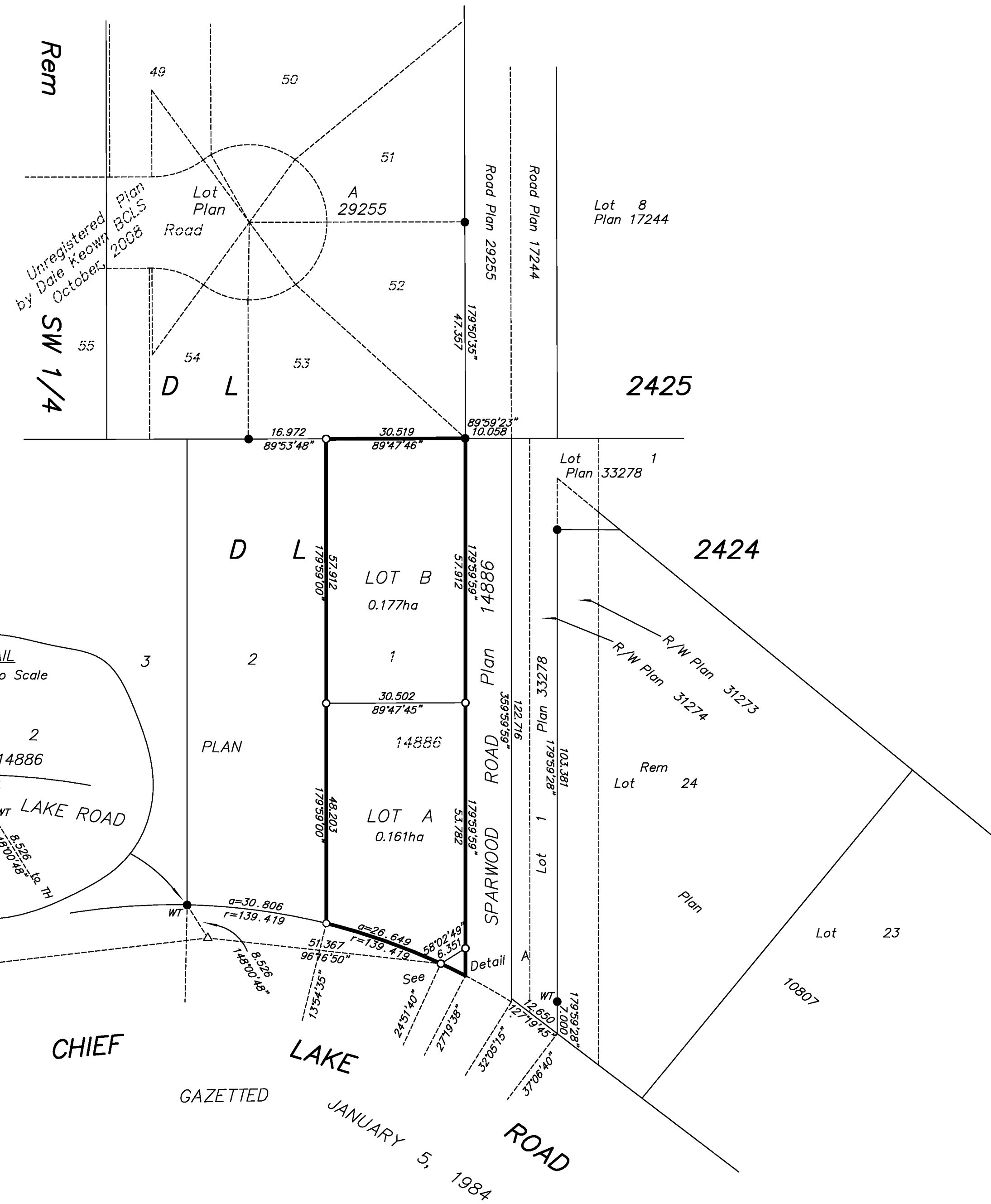
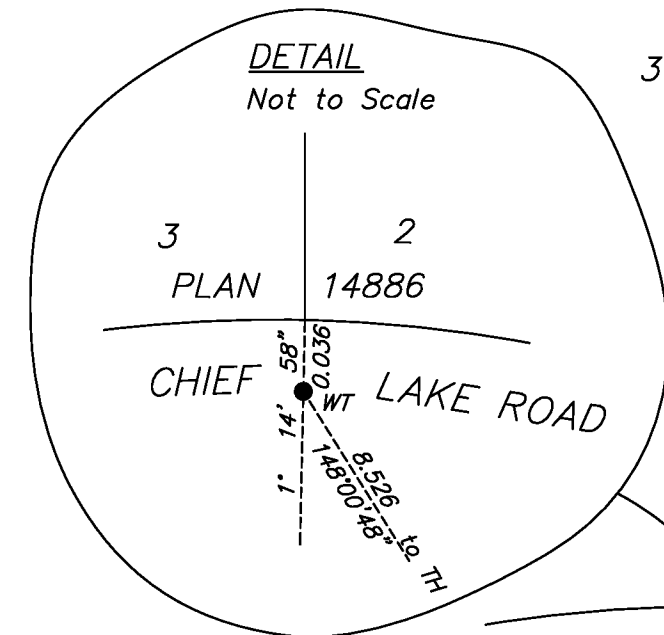
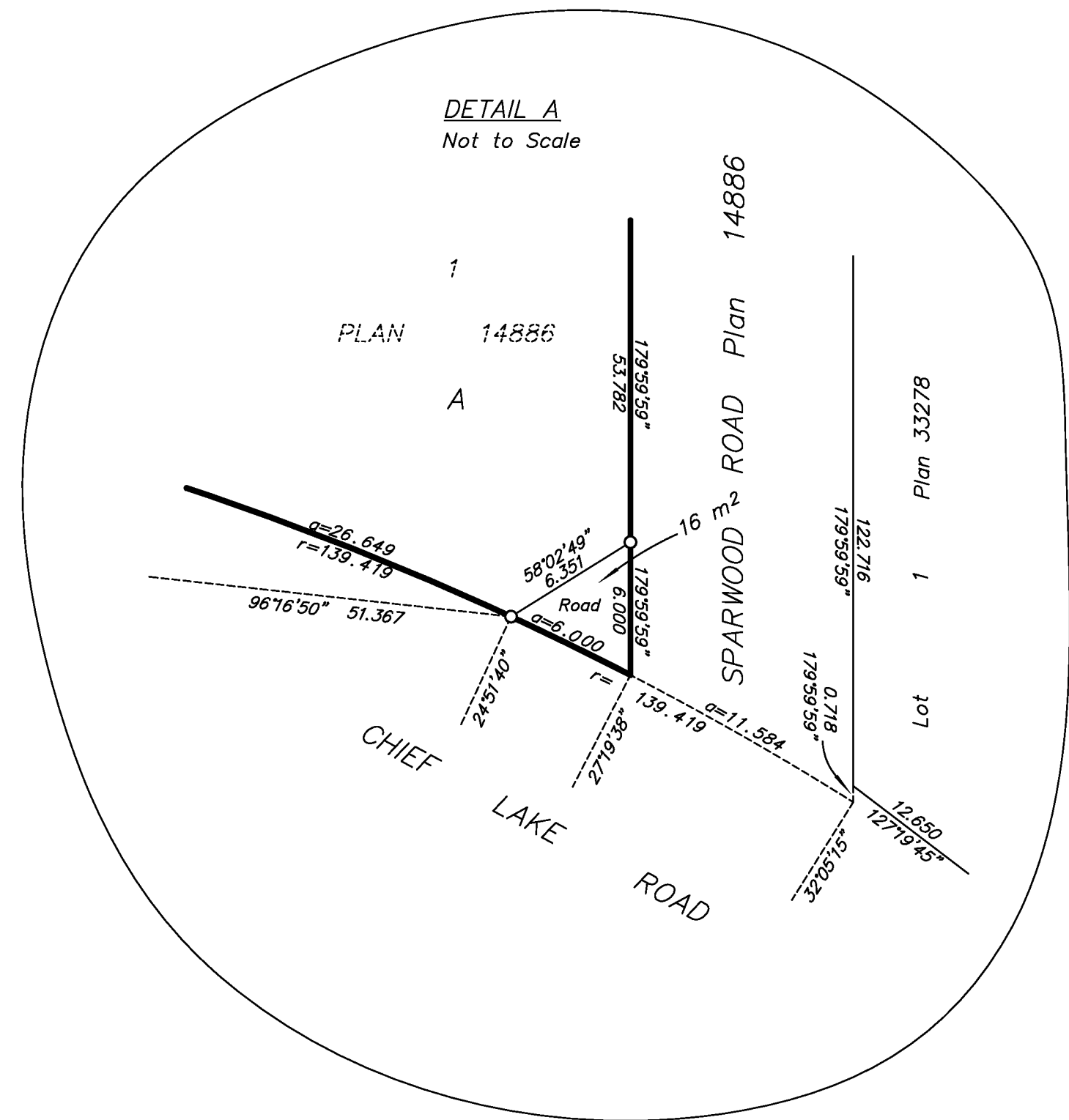
ALL DISTANCES ARE HORIZONTAL GROUND-LEVEL AND ARE SHOWN IN METRES AND DECIMALS THEREOF, UNLESS OTHERWISE INDICATED.

THIS PLAN SHOWS HORIZONTAL GROUND-LEVEL DISTANCES, UNLESS OTHERWISE SPECIFIED. TO COMPUTE GRID DISTANCES, MULTIPLY GROUND-LEVEL DISTANCES BY THE AVERAGE COMBINED FACTOR OF 0.9994841 WHICH HAS BEEN DERIVED FROM 85H1593 AND 85H1610.

LEGEND

- STANDARD IRON POST FOUND
- STANDARD IRON POST PLACED
- ⊙ CONTROL MONUMENT FOUND
- △ TRAVERSE HUB PLACED

NOTE: THIS PLAN SHOWS ONE OR MORE WITNESS POSTS WHICH ARE NOT SET ON THE TRUE CORNER(S).



THIS PLAN LIES WITHIN THE JURISDICTION OF THE APPROVING OFFICER FOR THE CITY OF PRINCE GEORGE. CPG File: SD100432

THE FIELD SURVEY REPRESENTED BY THIS PLAN WAS COMPLETED ON THE 5th DAY OF JUNE, 2014. DALE KEOWN, BOLS 488

THIS PLAN LIES WITHIN THE REGIONAL DISTRICT OF FRASER - FORT GEORGE.

McElhanney
McElhanney Associates
Land Surveying Ltd.
Prince George, B.C.
E-mail: pgmals@mcElhanney.com
Ph: (250) 561-2229 Fax: (250) 563-1941

DL- 2424	File No. - 6181-S
----------	-------------------

2014-11-10