

SUBDIVISION PLAN OF PART OF LOT 1, DISTRICT LOT 1605, PLAN 30863, EXCEPT PLANS 34562, PGP38585, PGP41824, PGP46265, PGP46269, BCP25534, AND BCP36464; PART OF LOT 54, DISTRICT LOT 1605, PLAN PGP38585, EXCEPT PLANS PGP41824, PGP46265, BCP14774, BCP25534, BCP36464, AND EPP8499; CLOSED ROAD AS SHOWN ON PLAN EPP41946 (BEING DEDICATED ROAD ON PLAN 1065, DISTRICT LOT 1605); PART OF LOT 1, DISTRICT LOT 1605, PLAN 23717, EXCEPT PLANS 23862, 25644, AND BCP14774; AND THE SOUTHWEST 1/4 OF DISTRICT LOT 754, EXCEPT PLANS 22076, 22200, 22932, 23167, 23862, 24920, 25106, 26821, 27656, 29054, 34387, 34562, PGP38585, PGP41824, BCP14774, AND EPP8499; ALL IN CARIBOO DISTRICT,

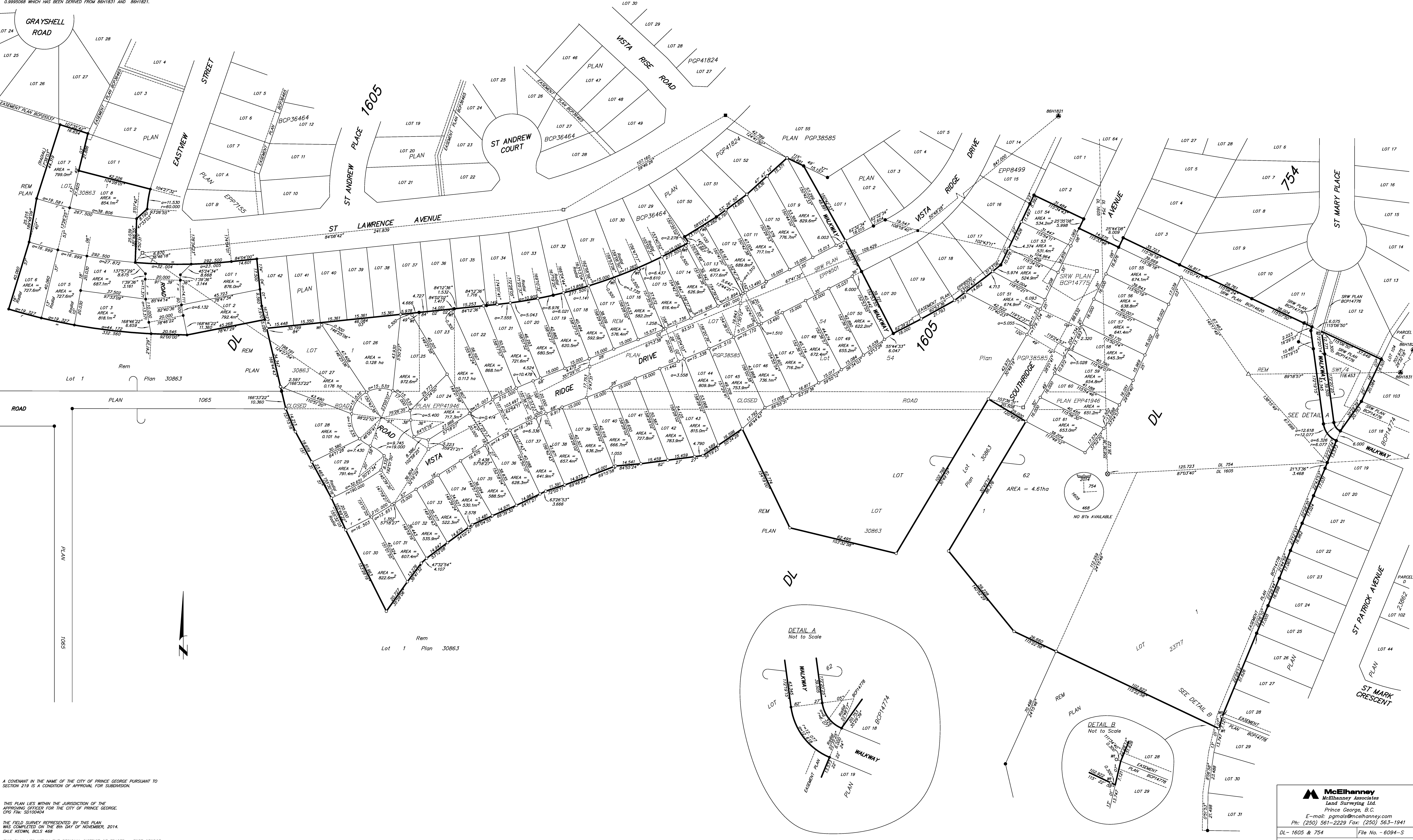
BCGS 93G.087  
INTEGRATED SURVEY AREA No. 39, PRINCE GEORGE, NAD83 (CSRS)

THE INTENDED PLOT SIZE OF THIS PLAN IS 110mm IN WIDTH BY 84mm IN HEIGHT (E 500) WHEN PLOTTED AT A SCALE OF 1:750  
10m 0 10 20 30 40 50m

ALL DISTANCES ARE HORIZONTAL GROUND-LEVEL AND ARE SHOWN IN METRES AND DECIMALS THEREOF, UNLESS OTHERWISE INDICATED.

- LEGEND**
- LEAD PLUG FOUND
  - LEAD PLUG PLACED
  - STANDARD IRON POST FOUND
  - STANDARD IRON POST PLACED
  - CONTROL MONUMENT FOUND
  - TRAVERSE HUB PLACED
  - STANDARD CAPPED POST PLACED
- GRID BEARINGS ARE DERIVED FROM OBSERVATIONS BETWEEN GEODETIC CONTROL MONUMENTS 88H1831 AND 88H1821.  
THIS PLAN SHOWS HORIZONTAL GROUND-LEVEL DISTANCES, UNLESS OTHERWISE SPECIFIED, TO COMPUTE GRID DISTANCES. MULTIPLE GROUND-LEVEL DISTANCES BY THE AVERAGE CORRECTION FACTOR OF 0.999268 WHICH HAS BEEN DERIVED FROM 88H1831 AND 88H1821.

NOTE: THIS PLAN SHOWS ONE OR MORE WITNESS POSTS WHICH ARE NOT SET ON THE TRUE CORNERS.



A COVENANT IN THE NAME OF THE CITY OF PRINCE GEORGE PURSUANT TO SECTION 219 IS A CONDITION OF APPROVAL FOR SUBDIVISION.

THIS PLAN LIES WITHIN THE JURISDICTION OF THE APPROVING OFFICER FOR THE CITY OF PRINCE GEORGE.  
CPC File No. SD100404

THE FIELD SURVEY REPRESENTED BY THIS PLAN WAS COMPLETED ON THE 8th DAY OF NOVEMBER, 2014.  
DALE REIDWIN, BCLS 488

THIS PLAN LIES WITHIN THE REGIONAL DISTRICT OF FRASER - FORT GEORGE.

**McElhanney**  
McElhanney Associates  
Land Surveying Ltd.  
Prince George, B.C.  
E-mail: pgm@mcElhanney.com  
Ph: (250) 561-2229 Fax: (250) 563-1941

DL - 1605 & 754 File No. - 6094-S  
CPC File No. SD100404