

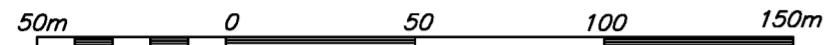
# REFERENCE PLAN TO ACCOMPANY BYLAW NO. 8590, CITY OF PRINCE GEORGE, TO CLOSE PART DEDICATED ROAD ON PLAN 1065, DISTRICT LOT 1605, CARIBOO DISTRICT.

PLAN EPP41946

PURSUANT TO SECTION 120 OF THE LAND TITLE ACT AND SECTION 40 OF THE COMMUNITY CHARTER.  
BCGS 93G.087

INTEGRATED SURVEY AREA No. 39, PRINCE GEORGE, NAD83 (CSRS)

THE INTENDED PLOT SIZE OF THIS PLAN IS 560mm IN WIDTH BY 432mm IN HEIGHT (C SIZE) WHEN PLOTTED AT A SCALE OF 1:2000

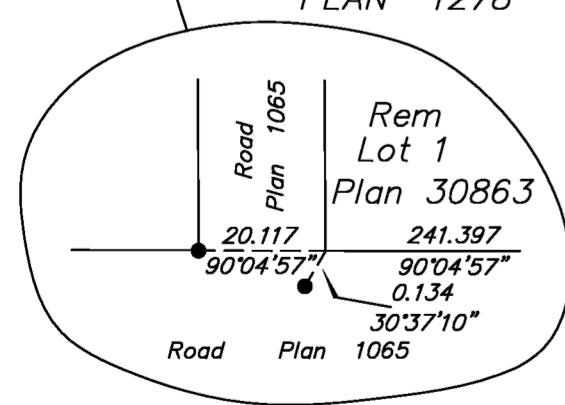
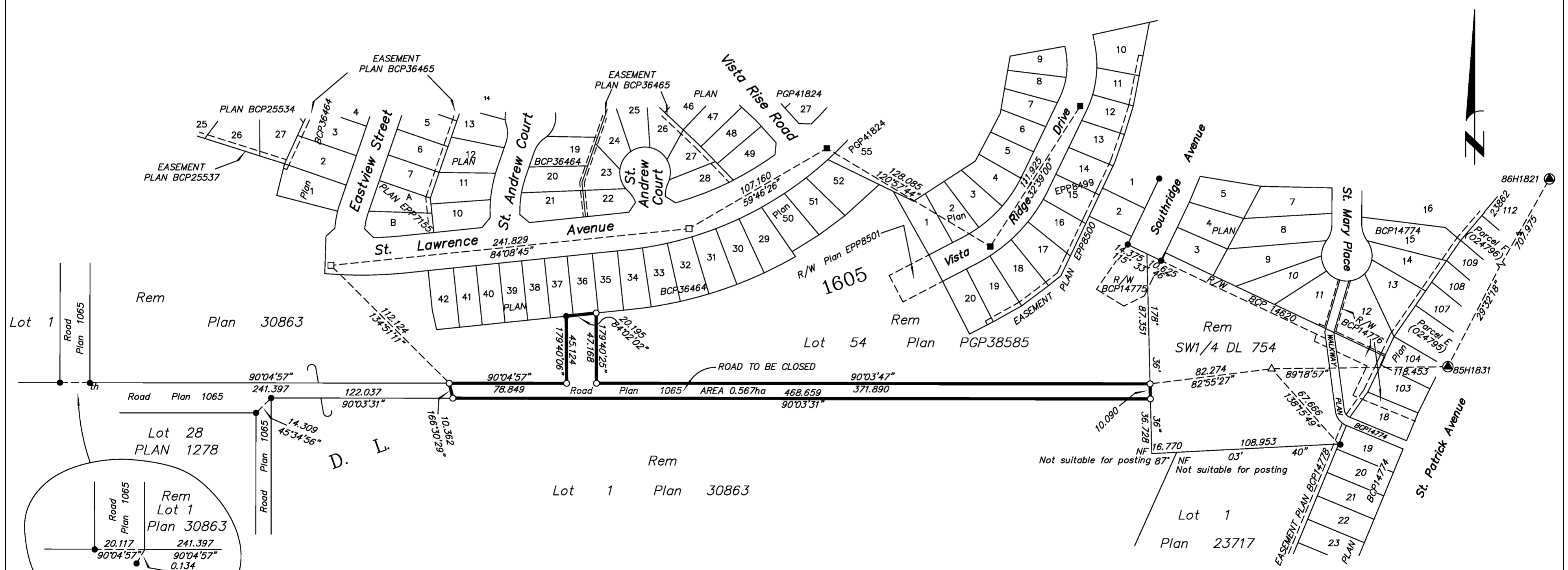


ALL DISTANCES ARE HORIZONTAL GROUND-LEVEL AND ARE SHOWN IN METRES AND DECIMALS THEREOF, UNLESS OTHERWISE INDICATED.

LEGEND

- ⊙ CONTROL MONUMENT FOUND
- LEAD PLUG FOUND
- LEAD PLUG PLACED
- STANDARD IRON POST FOUND
- STANDARD IRON POST PLACED
- △ TRAVERSE HUB PLACED

THIS PLAN SHOWS HORIZONTAL GROUND-LEVEL DISTANCES, UNLESS OTHERWISE SPECIFIED. TO COMPUTE GRID DISTANCES, MULTIPLY GROUND-LEVEL DISTANCES BY THE AVERAGE COMBINED FACTOR OF 0.9995066 WHICH HAS BEEN DERIVED FROM 85H1831 AND 85H1821.



**McElhanney**  
McElhanney Associates  
Land Surveying Ltd.  
Prince George, B.C.  
E-mail: pgmals@mcelhanney.com  
Ph: (250) 561-2229 Fax: (250) 563-1941

DL - 1605	File No. - 6094-BL
CPG FILE NO. SD100404	

THE FIELD SURVEY REPRESENTED BY THIS PLAN WAS COMPLETED ON THE 16th DAY OF MAY, 2014.  
DALE KEOWN, BCLS 468

THIS PLAN LIES WITHIN THE REGIONAL DISTRICT OF FRASER - FORT GEORGE.