

**REFERENCE PLAN OF CONSOLIDATION OF  
LOT 5, DISTRICT LOT 485, CARIBOO DISTRICT,  
PLAN BCP38207 AND THAT PART OF DISTRICT LOT 485,  
CARIBOO DISTRICT ON PLAN PGP35183, AS SHOWN  
ON PLAN EPP36988.**

**PLAN EPP41889**

BCGS 93G.087

PURSUANT TO SECTION 100(1)(b) OF THE LAND TITLE ACT.

THIS PLAN LIES WITHIN INTEGRATED SURVEY  
AREA No. 39, PRINCE GEORGE, NAD83 (GSR) 4.0.0.BC.1

THE INTENDED PLOT SIZE OF THIS PLAN IS 432mm IN WIDTH BY  
560mm IN HEIGHT (C SIZE) WHEN PLOTTED AT A SCALE OF 1:1000



ALL DISTANCES ARE SHOWN IN METRES AND  
DECIMALS THEREOF, UNLESS OTHERWISE INDICATED.

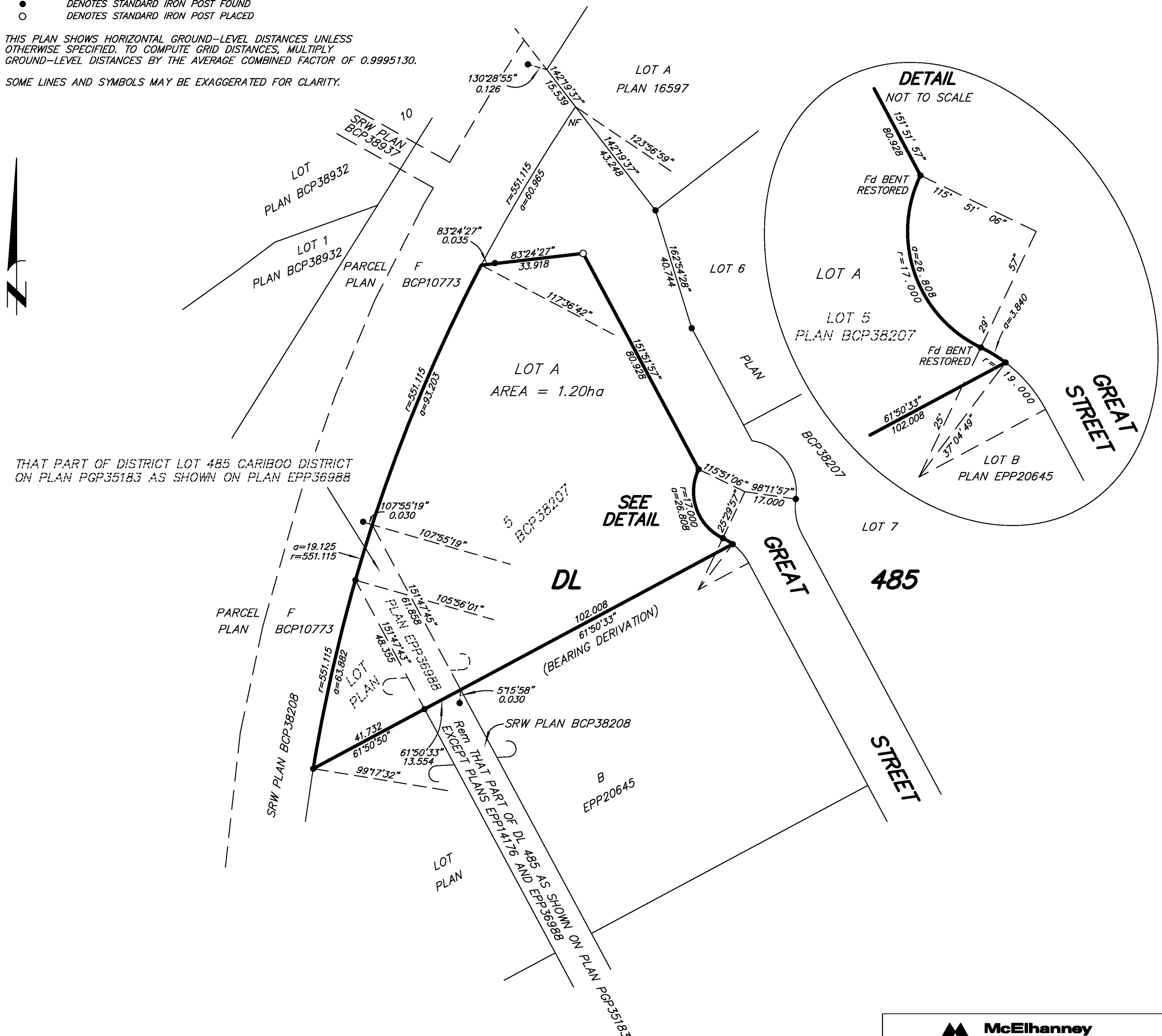
GRID BEARINGS ARE DERIVED FROM PREVIOUSLY  
INTEGRATED PLAN EPP20645.

**LEGEND**

- DENOTES STANDARD IRON POST FOUND
- DENOTES STANDARD IRON POST PLACED

THIS PLAN SHOWS HORIZONTAL GROUND-LEVEL DISTANCES UNLESS  
OTHERWISE SPECIFIED. TO COMPUTE GRID DISTANCES, MULTIPLY  
GROUND-LEVEL DISTANCES BY THE AVERAGE COMBINED FACTOR OF 0.9995130.

SOME LINES AND SYMBOLS MAY BE EXAGGERATED FOR CLARITY.



THE FIELD SURVEY REPRESENTED BY THIS PLAN  
WAS COMPLETED ON THE 10th DAY OF JULY, 2014.  
DARREN KENT, BCLS 904

THIS PLAN LIES WITHIN THE REGIONAL DISTRICT OF FRASER - FORT GEORGE.

**McElhanney**  
McElhanney Associates  
Land Surveying Ltd.  
Prince George, B.C.  
E-mail: pgmals@mcelhanney.com  
Ph: (250) 561-2229 Fax: (250) 563-1941

DL- 485 File No. - 6231-C