


# PLAN OF SUBDIVISION OF LOTS 3 AND 4, PLAN 20592, DISTRICT LOT 2101, CARIBOO DISTRICT.

PLAN EPP3875

BCGS 93G.096

THE INTENDED PLOT SIZE OF THIS PLAN IS 560mm IN WIDTH BY 432mm IN HEIGHT (C SIZE) WHEN PLOTTED AT A SCALE OF 1:1000

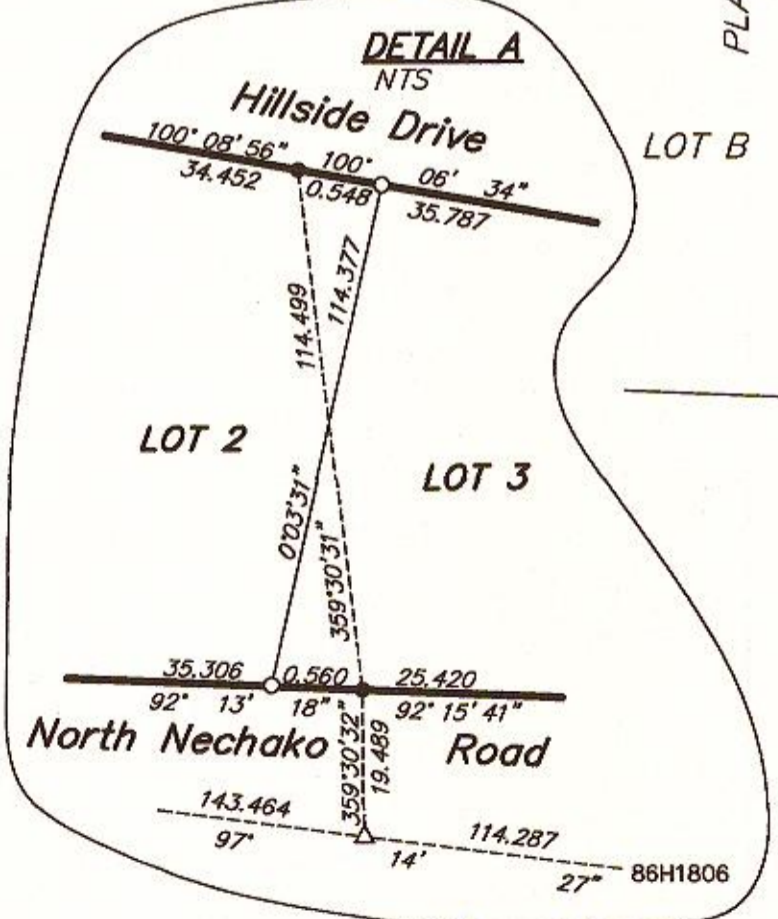
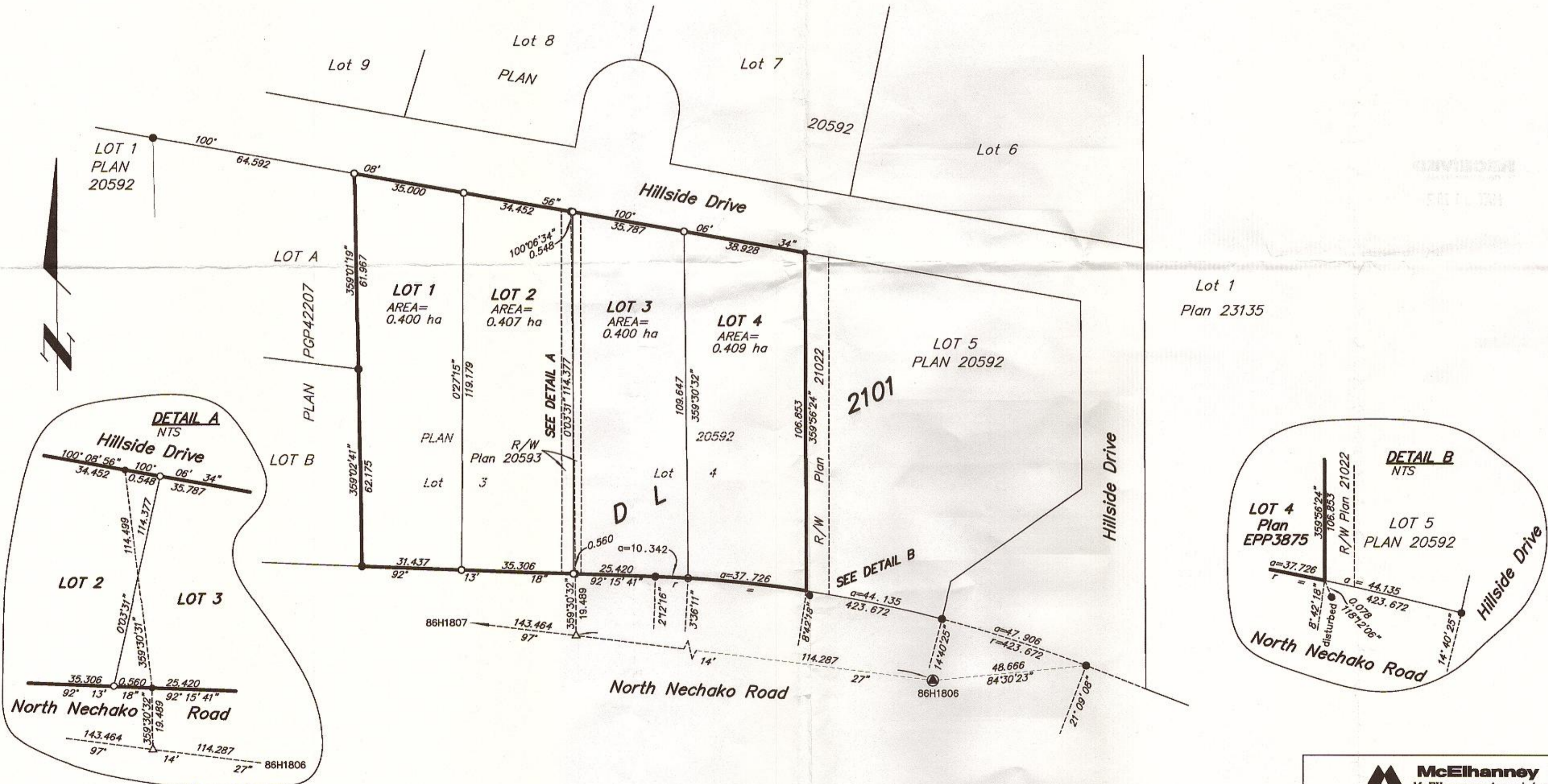


ALL DISTANCES ARE SHOWN IN METRES AND DECIMALS THEREOF, UNLESS OTHERWISE INDICATED.

Grid bearings are derived from observations between control monuments 86H1806 and 86H1807, integrated survey area number 39, City of Prince George, B.C. NAD83(CSRS)

THIS PLAN SHOWS HORIZONTAL GROUND-LEVEL DISTANCES UNLESS OTHERWISE SPECIFIED. TO COMPUTE GRID DISTANCES, MULTIPLY GROUND LEVEL DISTANCES BY THE AVERAGE COMBINED FACTOR OF 0.9995085 WHICH HAS BEEN DERIVED FROM CONTROL MONUMENTS 86H1807 AND 86H1806.

- LEGEND**
- Standard Iron Post Found
  - Standard Iron Post Placed
  - ⊙ Control Monument Found
  - △ Traverse Hub Placed



The field survey represented by this plan was completed by Dale Keown, BCLS, on the 4th day of May, 2011.

This plan lies within the jurisdiction of the Approving Officer for the City of Prince George.

File Number SD100304

This plan lies within the Regional District of Fraser-Fort George.

**McElhanney**  
 McElhanney Associates  
 Land Surveying Ltd.  
 Prince George, B.C.  
 E-mail: pgmals@mcElhanney.com  
 Ph: (250) 561-2229 Fax: (250) 563-1941

DL- 2101	REF 5553	File No. - 5795-S2
----------	----------	--------------------

January 31, 2012