

**EXPLANATORY PLAN OF STATUTORY RIGHT OF WAY  
OVER PARTS OF LOTS A AND B, DL 2014,  
CARIBOO DISTRICT, PLAN EPP6077.**

**PLAN EPP38020**

BCGS 93G.087

PURSUANT TO SECTION 113 OF THE LAND TITLE ACT.

THIS PLAN LIES WITHIN INTEGRATED SURVEY  
AREA No. 39, PRINCE GEORGE, NAD83 (CSRS).

THE INTENDED PLOT SIZE OF THIS PLAN IS 560mm IN WIDTH BY  
432mm IN HEIGHT (C SIZE) WHEN PLOTTED AT A SCALE OF 1:500



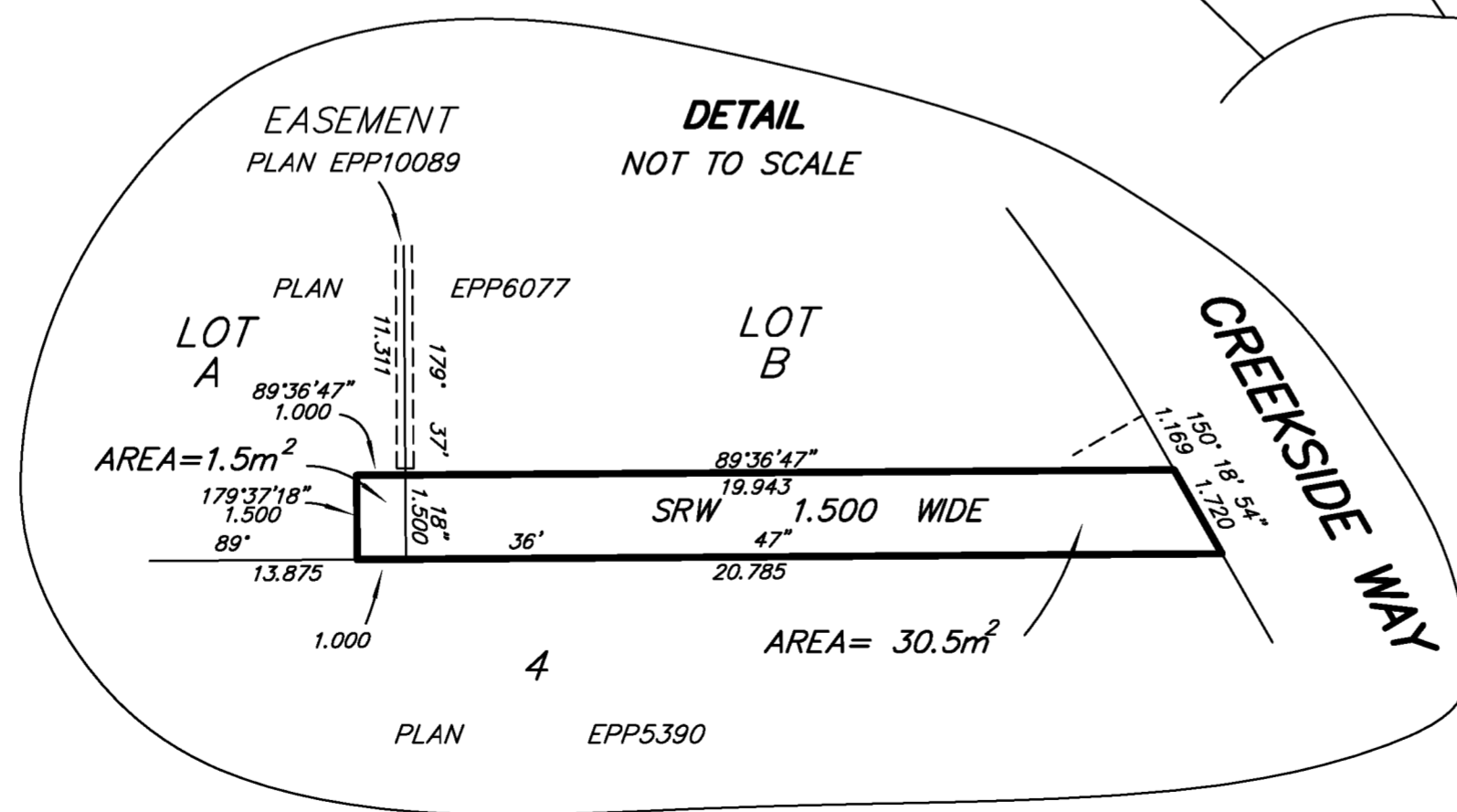
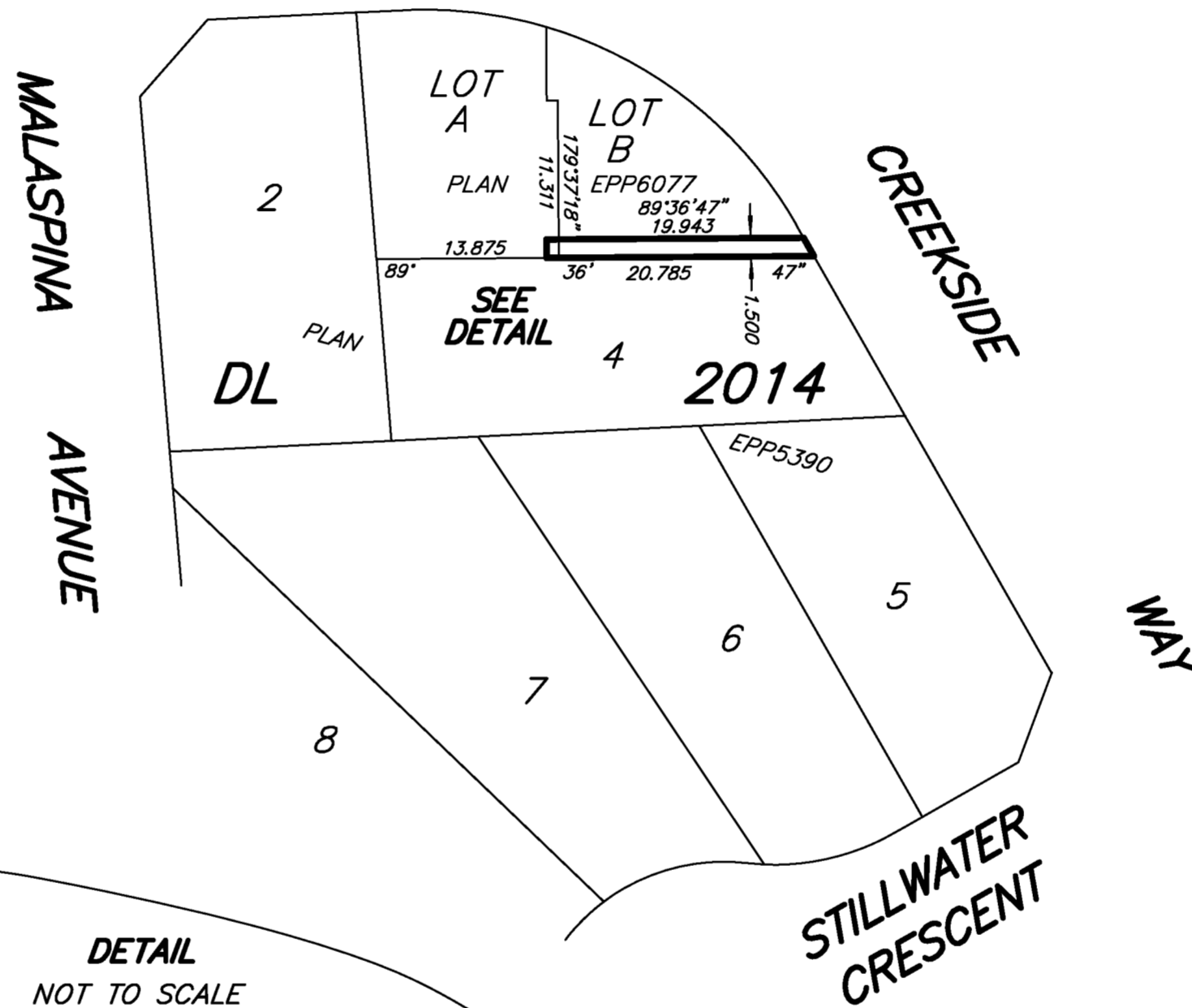
ALL DISTANCES ARE HORIZONTAL GROUND-LEVEL AND ARE SHOWN  
IN METRES AND DECIMALS THEREOF, UNLESS OTHERWISE INDICATED.

**LEGEND**

GRID BEARINGS ARE DERIVED FROM PREVIOUSLY  
INTEGRATED PLAN EPP6077.



BOOK OF REFERENCE	
DESCRIPTION	AREA
LOT A, DL 2014, PLAN EPP6077	1.5m <sup>2</sup>
LOT B, DL 2014, PLAN EPP6077	30.5m <sup>2</sup>
TOTAL AREA	32.0m <sup>2</sup>



THIS PLAN IS BASED ON THE FOLLOWING LAND TITLE  
AND SURVEY AUTHORITY OF BC RECORDS: PLAN EPP6077  
DAVID E STORBACK, BCLS, CLS

THIS PLAN LIES WITHIN THE REGIONAL DISTRICT OF FRASER - FORT GEORGE

**McElhanney**  
McElhanney Associates  
Land Surveying Ltd.  
Prince George, B.C.  
E-mail: pgmals@mcelhanney.com  
Ph: (250) 561-2229 Fax: (250) 563-1941

D.L- 2014	File No. - 5861-RW
CPG FILE NO. : SD100346	