

# EXPLANATORY PLAN OF STATUTORY RIGHT OF WAY OVER PART OF LOT A, DISTRICT LOT 2003, CARIBOO DISTRICT, PLAN PGP40105, EXCEPT PLAN PGP46853.

**PLAN EPP36987**

BCGS 93G.087

PURSUANT TO SECTION 99(1)(e) OF THE LAND TITLE ACT.

INTEGRATED SURVEY AREA No. 39, PRINCE GEORGE, NADB3(CSRS) 4.0.0.BC.1

THE INTENDED PLOT SIZE OF THIS PLAN IS 432mm IN WIDTH BY 280mm IN HEIGHT (B SIZE) WHEN PLOTTED AT A SCALE OF 1:500



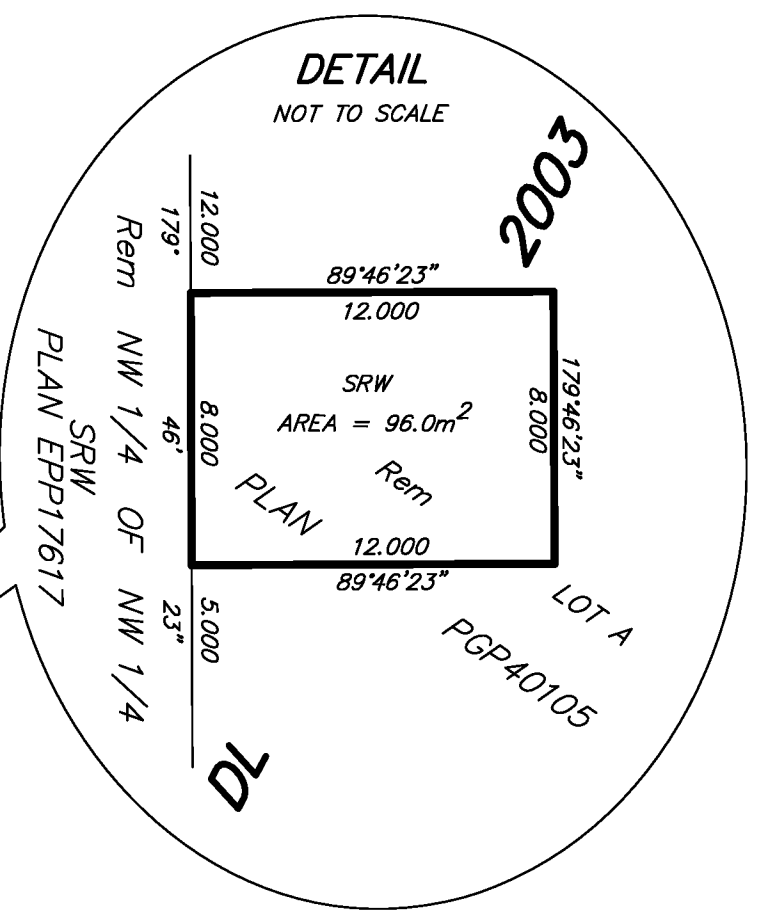
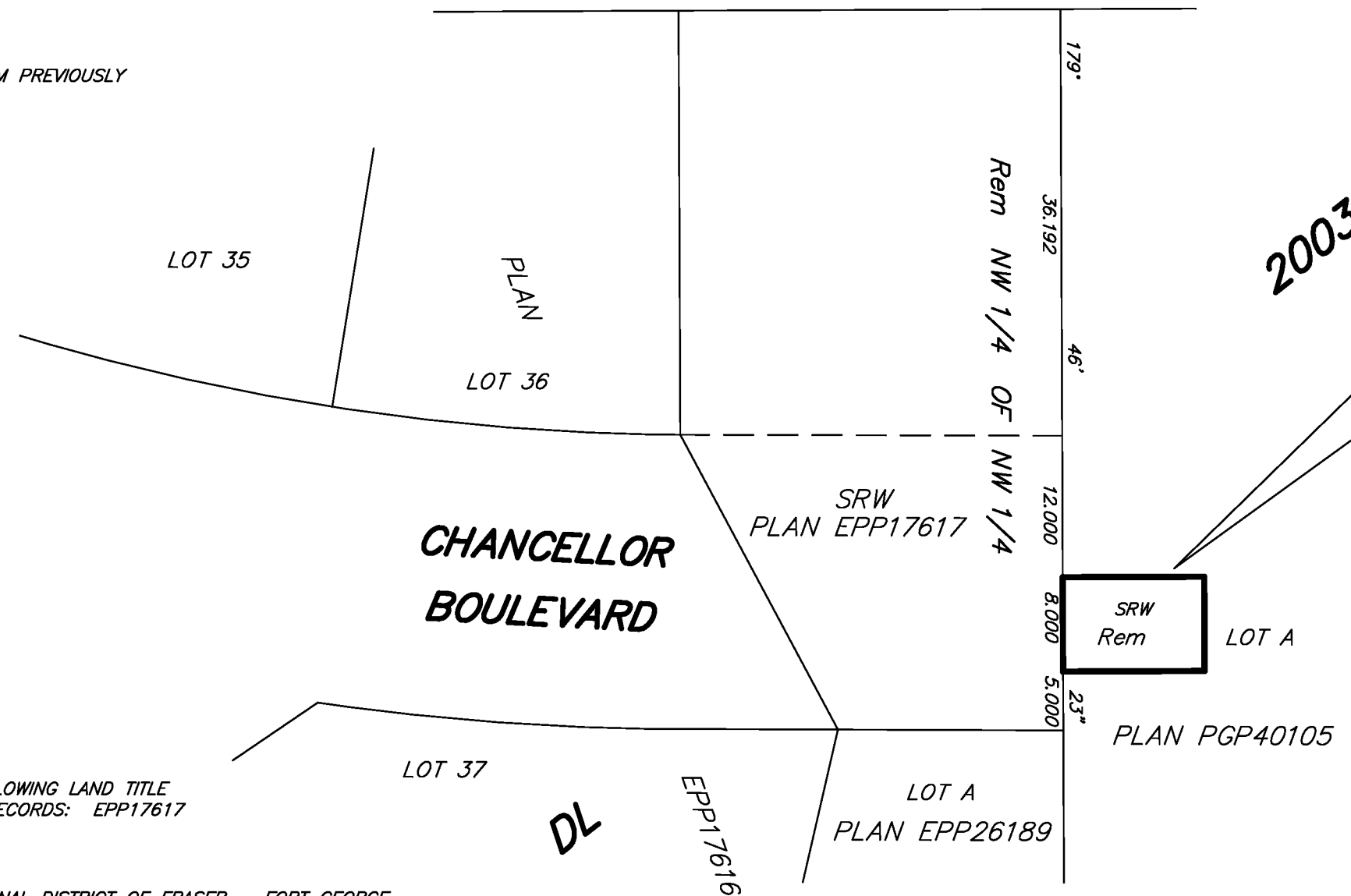
ALL DISTANCES ARE HORIZONTAL GROUND-LEVEL AND ARE SHOWN IN METRES AND DECIMALS THEREOF, UNLESS OTHERWISE INDICATED.

Rem LOT 1  
PLAN BCP22408

DL 905

DETAIL  
NOT TO SCALE

**LEGEND**  
GRID BEARINGS ARE DERIVED FROM PREVIOUSLY INTEGRATED PLAN EPP17617.



THIS PLAN IS BASED ON THE FOLLOWING LAND TITLE AND SURVEY AUTHORITY OF BC RECORDS: EPP17617  
DARREN KENT, BCLS 904  
21st DAY OF FEBRUARY, 2014

THIS PLAN LIES WITHIN THE REGIONAL DISTRICT OF FRASER - FORT GEORGE.

**McElhanney**  
McElhanney Associates  
Land Surveying Ltd.  
Prince George, B.C.  
E-mail: pgmals@mcelhanney.com  
Ph: (250) 561-2229 Fax: (250) 563-1941

DL- 2003 File No. - 6014-01-SRW