

**EXPLANATORY PLAN OF EASEMENT OVER
PART OF LOT A, DISTRICT LOT 2508,
CARIBOO DISTRICT, PLAN EPP25203.**

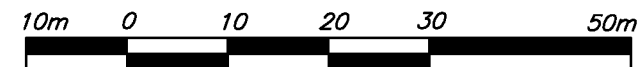
PLAN EPP36985

BCGS 93G.096

PURSUANT TO SECTION 99(1)(e) OF THE LAND TITLE ACT.

THIS PLAN LIES WITHIN INTEGRATED SURVEY
AREA No. 39, PRINCE GEORGE, NAD83(CSRS) 4.0.0.BC.1

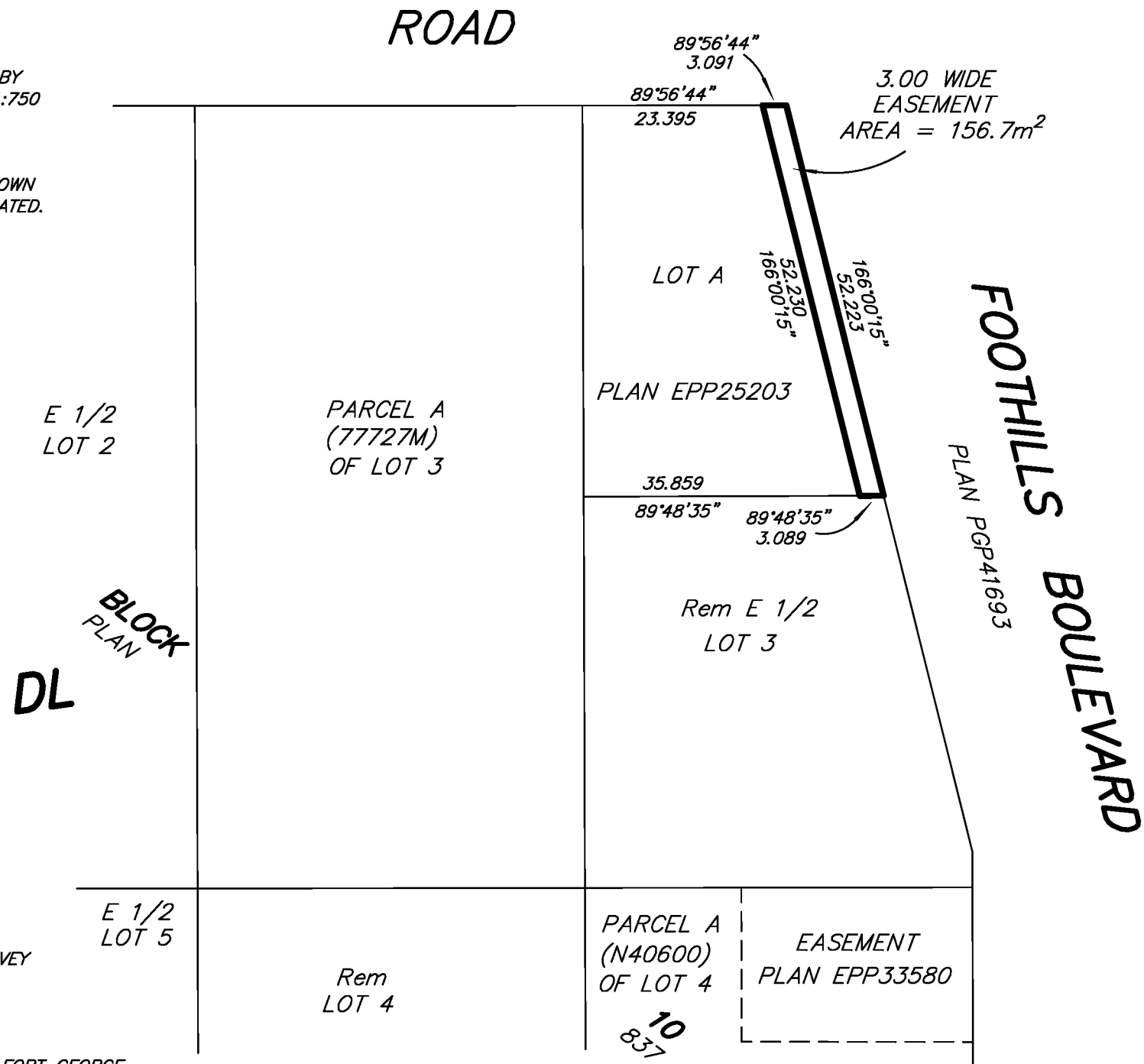
THE INTENDED PLOT SIZE OF THIS PLAN IS 432mm IN WIDTH BY
280mm IN HEIGHT (B SIZE) WHEN PLOTTED AT A SCALE OF 1:750



ALL DISTANCES ARE HORIZONTAL GROUND-LEVEL AND ARE SHOWN
IN METRES AND DECIMALS THEREOF, UNLESS OTHERWISE INDICATED.

LEGEND

GRID BEARINGS ARE DERIVED FROM PREVIOUSLY
INTEGRATED PLAN EPP25203.



THIS PLAN IS BASED ON THE FOLLOWING LAND TITLE AND SURVEY
AUTHORITY OF BC RECORDS: PLAN EPP25203
13th DAY OF FEBRUARY, 2014
DARREN KENT, BCLS 904

THIS PLAN LIES WITHIN THE REGIONAL DISTRICT OF FRASER - FORT GEORGE.

McElhanney
McElhanney Associates
Land Surveying Ltd.
Prince George, B.C.

E-mail: pgmals@mcelhanney.com
Ph: (250) 561-2229 Fax: (250) 563-1941

DL- 2508

File No. - 6014-04-E