

**SUBDIVISION PLAN OF LOTS 2 AND 3,
DISTRICT LOT 936, CARIBOO DISTRICT,
PLAN EPP21547.**

PLAN EPP36984

BCGS 93G.097

PURSUANT TO SECTION 67 OF THE LAND TITLE ACT.

THIS PLAN LIES WITHIN INTEGRATED SURVEY AREA No. 39,
PRINCE GEORGE, NAD83(CSRS) 4.0.0.BC.1

THE INTENDED PLOT SIZE OF THIS PLAN IS 560mm IN WIDTH BY
432mm IN HEIGHT (C SIZE) WHEN PLOTTED AT A SCALE OF 1:1000



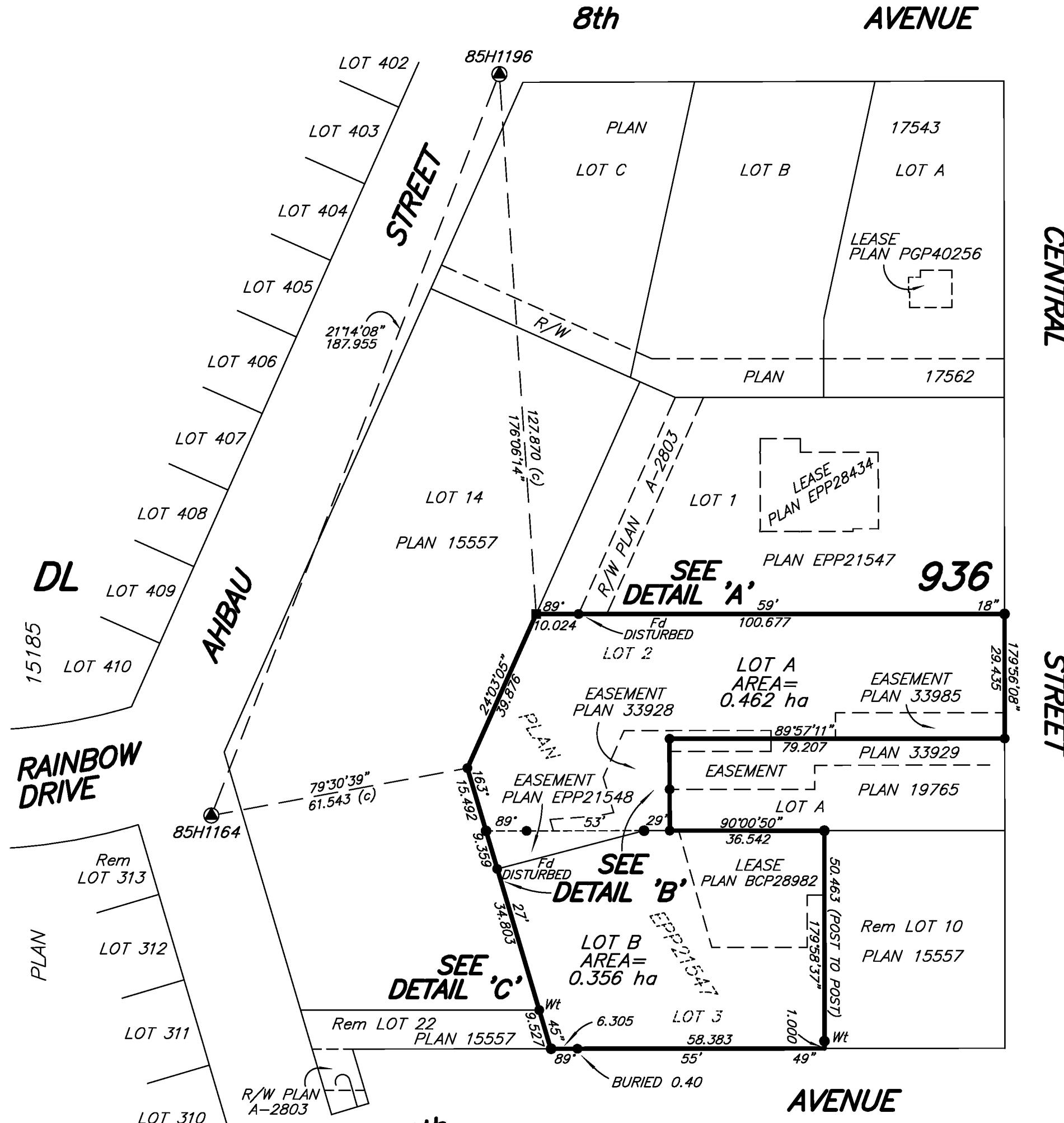
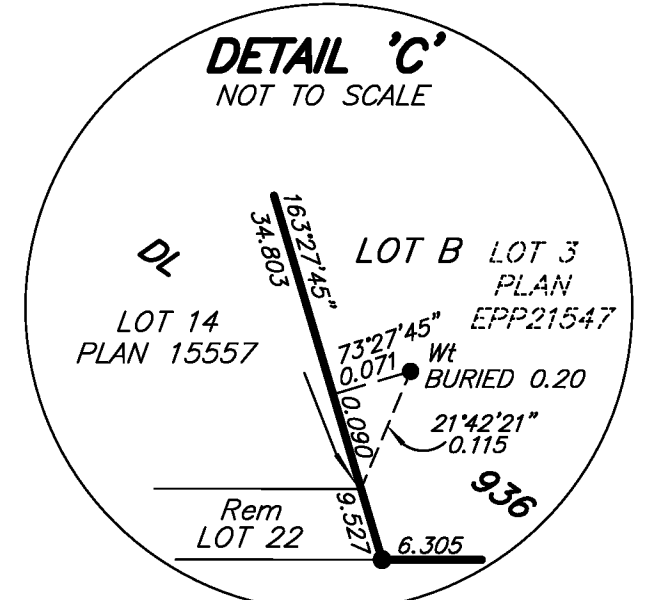
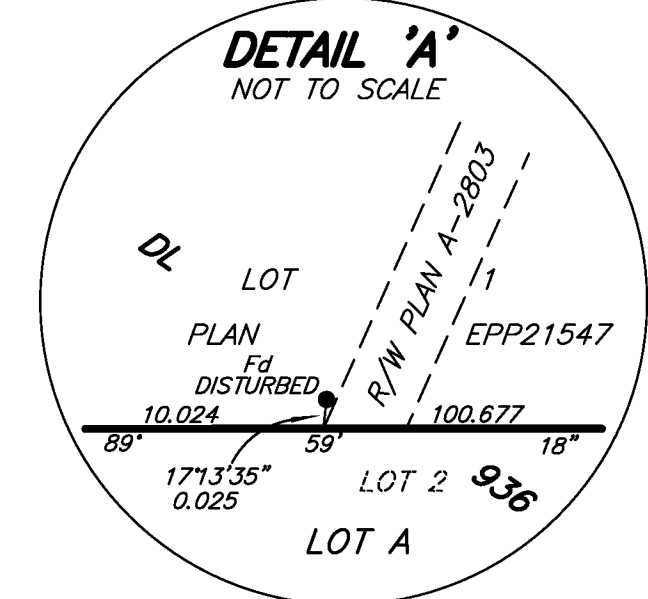
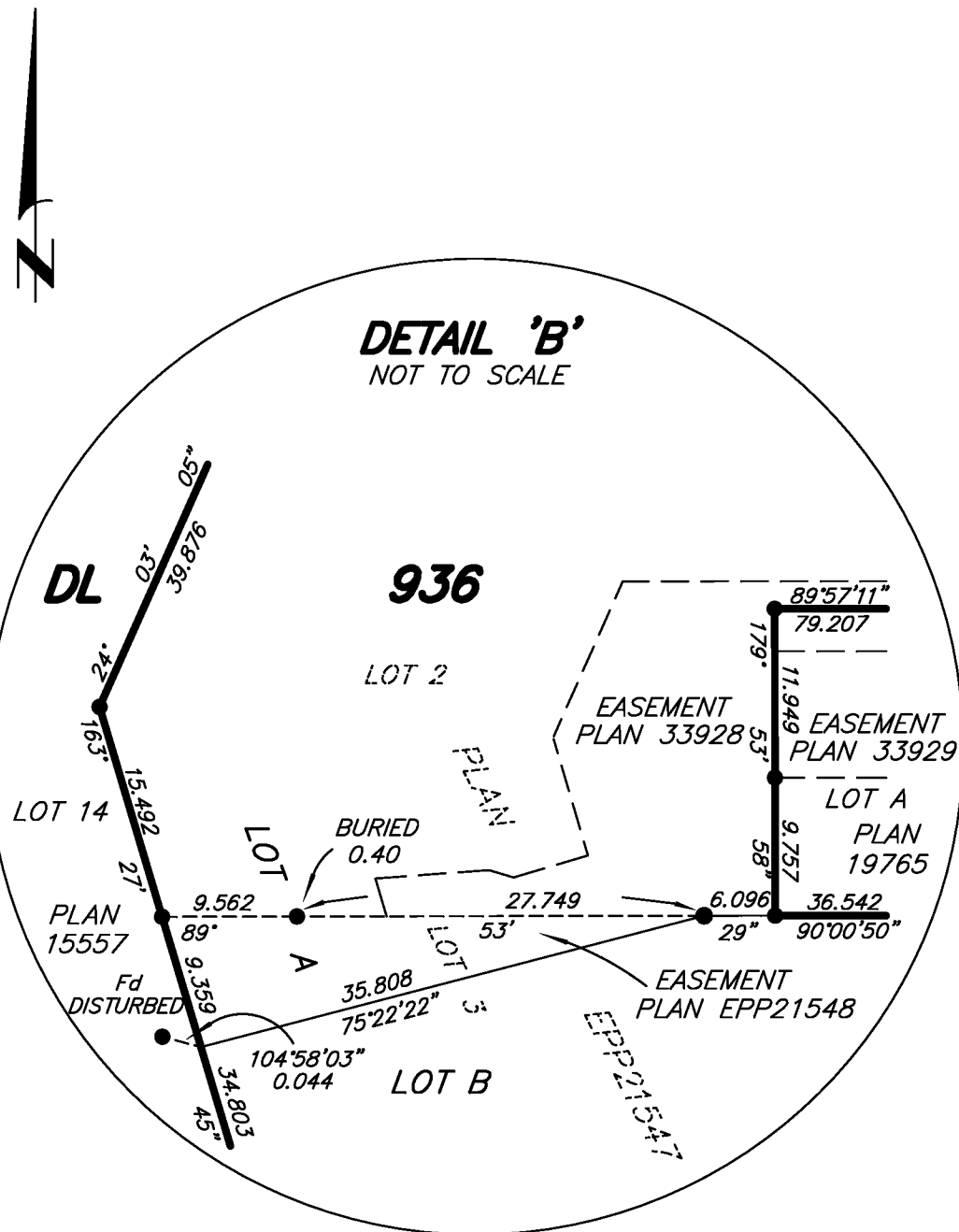
ALL DISTANCES ARE SHOWN IN METRES AND
DECIMALS THEREOF, UNLESS OTHERWISE INDICATED.

LEGEND

GRID BEARINGS ARE DERIVED FROM OBSERVATIONS BETWEEN
GEODETIC CONTROL MONUMENTS 85H1164 AND 85H1196.

- DENOTES CONTROL MONUMENT FOUND
- DENOTES LEAD PLUG FOUND
- DENOTES STANDARD IRON POST FOUND

THIS PLAN SHOWS HORIZONTAL GROUND-LEVEL DISTANCES UNLESS
OTHERWISE SPECIFIED. TO COMPUTE GRID DISTANCES, MULTIPLY
GROUND-LEVEL DISTANCES BY THE AVERAGE COMBINED FACTOR OF
0.9995105 WHICH HAS BEEN DERIVED FROM 85H1164 AND 85H1196.



THIS PLAN LIES WITHIN THE JURISDICTION OF THE APPROVING
OFFICER FOR THE MINISTRY OF TRANSPORTATION AND INFRASTRUCTURE.

THIS PLAN LIES WITHIN THE JURISDICTION OF THE
APPROVING OFFICER FOR THE CITY OF PRINCE GEORGE.
CPG FILE NO. : SD100440

THE FIELD SURVEY REPRESENTED BY THIS PLAN
WAS COMPLETED ON THE 20th DAY OF DECEMBER, 2013.
DARREN KENT, BCLS 904

THIS PLAN LIES WITHIN THE REGIONAL DISTRICT
OF FRASER - FORT GEORGE.

McElhanney
McElhanney Associates
Land Surveying Ltd.
Prince George, B.C.
E-mail: pgmals@mcelhanney.com
Ph: (250) 561-2229 Fax: (250) 563-1941

DL- 936	File No. - 6084-S
CPG FILE NO. : SD100440	