

**PLAN EPP35690**

**EXPLANATORY PLAN OF EASEMENT  
OVER PARTS OF LOTS 6 AND 7, DISTRICT  
LOT 2433, CARIBOO DISTRICT, PLAN EPP25213.**

PURSUANT TO SECTION 99(1)(e) OF THE LAND TITLE ACT.  
BCGS 93J.007

THIS PLAN LIES WITHIN INTEGRATED SURVEY  
AREA No. 39, PRINCE GEORGE, NAD83 (CSRS)

THE INTENDED PLOT SIZE OF THIS PLAN IS 560mm IN WIDTH BY  
432mm IN HEIGHT (C SIZE) WHEN PLOTTED AT A SCALE OF 1:500



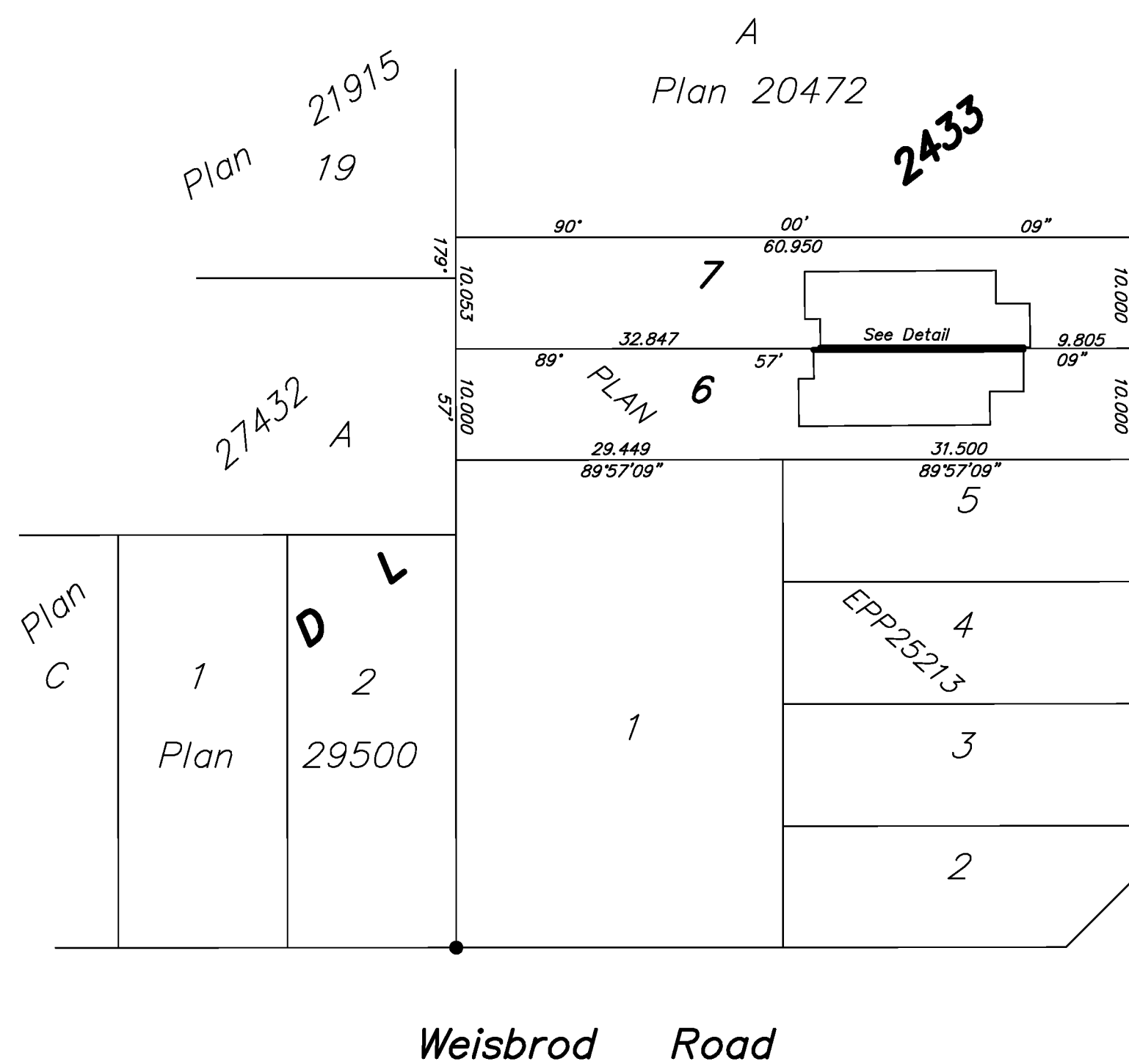
ALL DISTANCES ARE HORIZONTAL GROUND-LEVEL AND ARE SHOWN  
IN METRES AND DECIMALS THEREOF, UNLESS OTHERWISE INDICATED.

**LEGEND**

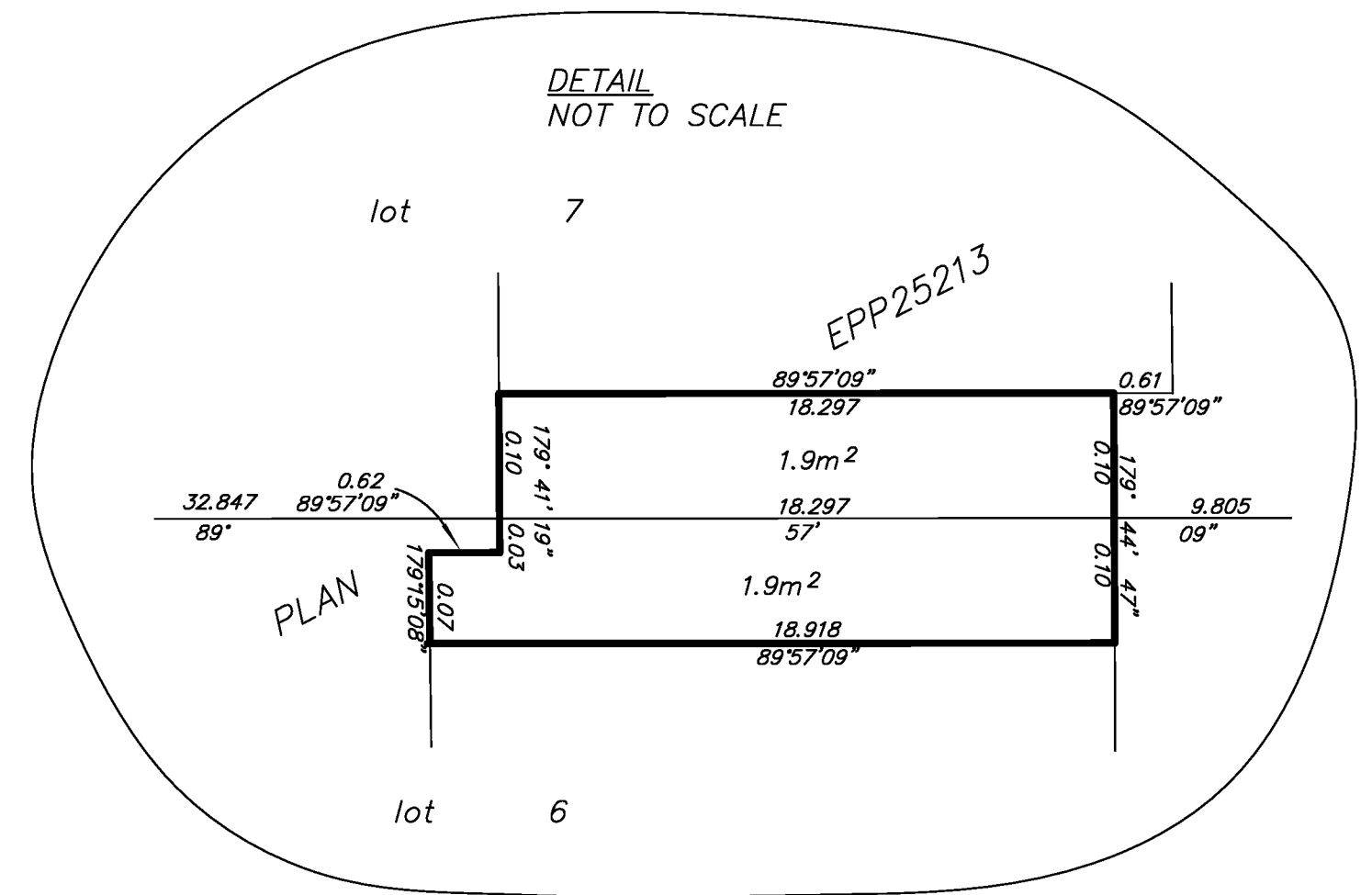
GRID BEARINGS ARE DERIVED FROM PREVIOUSLY  
INTEGRATED PLAN EPP25213

THIS PLAN SHOWS HORIZONTAL GROUND-LEVEL DISTANCES UNLESS OTHERWISE  
SPECIFIED. TO COMPUTE GRID DISTANCES, MULTIPLY GROUND-LEVEL DISTANCES  
BY THE AVERAGE COMBINED FACTOR OF 0.9994717 WHICH HAS BEEN DERIVED  
FROM 86H1663 AND 86H1659.

m<sup>2</sup> DENOTES SQUARE METRES



Carr Road



BOOK OF REFERENCE	
DESCRIPTION	AREA
Lot 6, Plan EPP25213,	1.9m <sup>2</sup>
Lot 7, Plan EPP25213,	1.9m <sup>2</sup>

THE FIELD SURVEY REPRESENTED BY THIS PLAN  
WAS COMPLETED ON THE 24th DAY OF OCTOBER, 2013.  
DALE KEOWN, BCLS 498

THIS PLAN LIES WITHIN THE REGIONAL DISTRICT OF FRASER - FORT GEORGE.

**McElhanney**  
McElhanney Associates  
Land Surveying Ltd.  
Prince George, B.C.

E-mail: pgmals@mcelhanney.com  
Ph: (250) 561-2229 Fax: (250) 563-1941

DL - 2433 File No. - 6046-PW-6&7