

SUBDIVISION PLAN OF PARCEL 1, PLAN EPP18028 BEING CLOSED ROAD, DISTRICT LOT 343, CARIBOO DISTRICT AND PARCEL A (PLAN 18353), DISTRICT LOT 343, CARIBOO DISTRICT, PLAN 1268, EXCEPT PLANS 32230 AND EPP32449.

PLAN EPP34406

BCGS 93G.097

THIS PLAN LIES WITHIN INTEGRATED SURVEY AREA No. 39, PRINCE GEORGE, NADB3 (CSRS)

THE INTENDED PLOT SIZE OF THIS PLAN IS 864mm IN WIDTH BY 560mm IN HEIGHT (D SIZE) WHEN PLOTTED AT A SCALE OF 1:750



ALL DISTANCES ARE SHOWN IN METRES AND DECIMALS THEREOF, UNLESS OTHERWISE INDICATED.

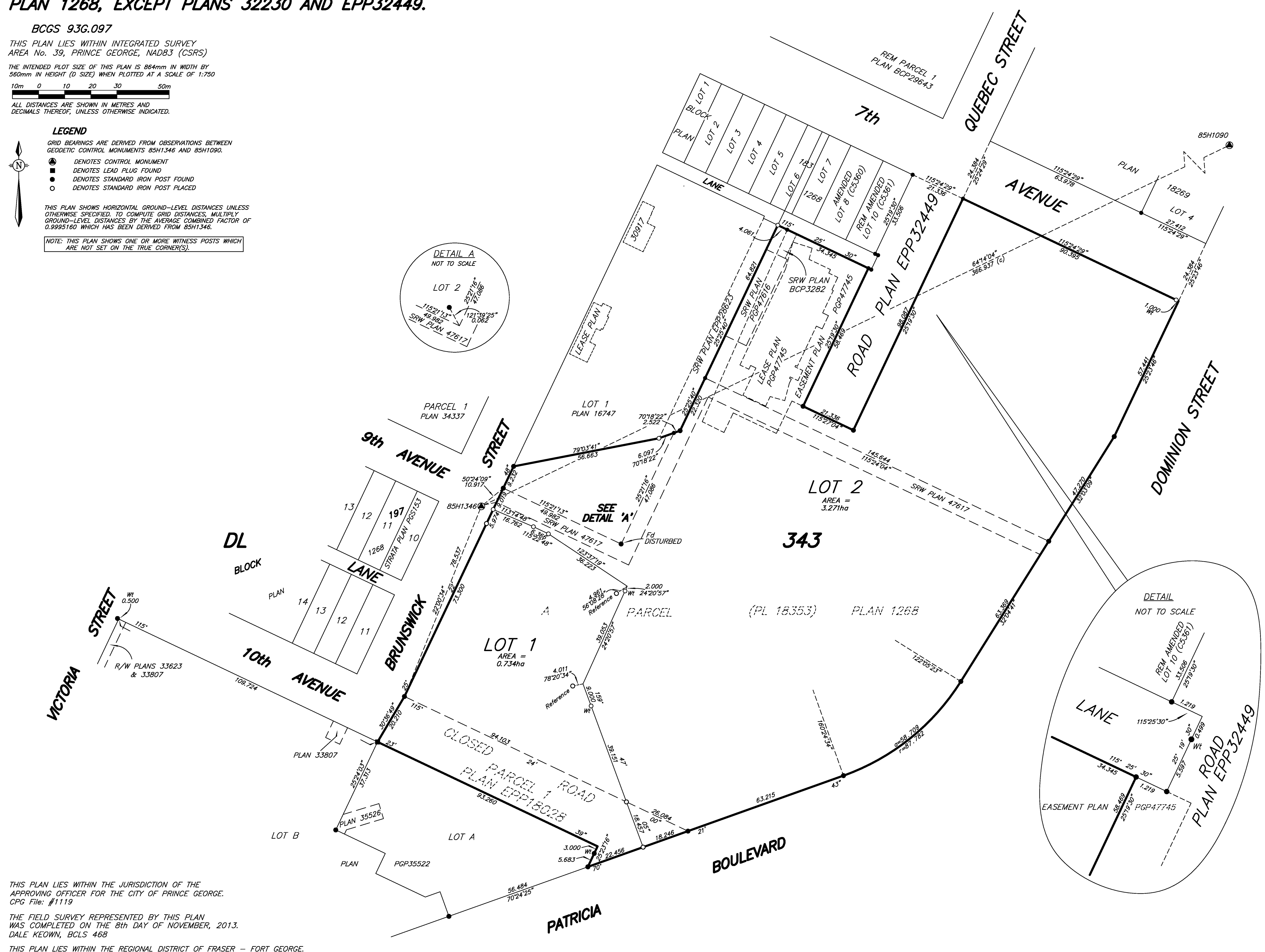
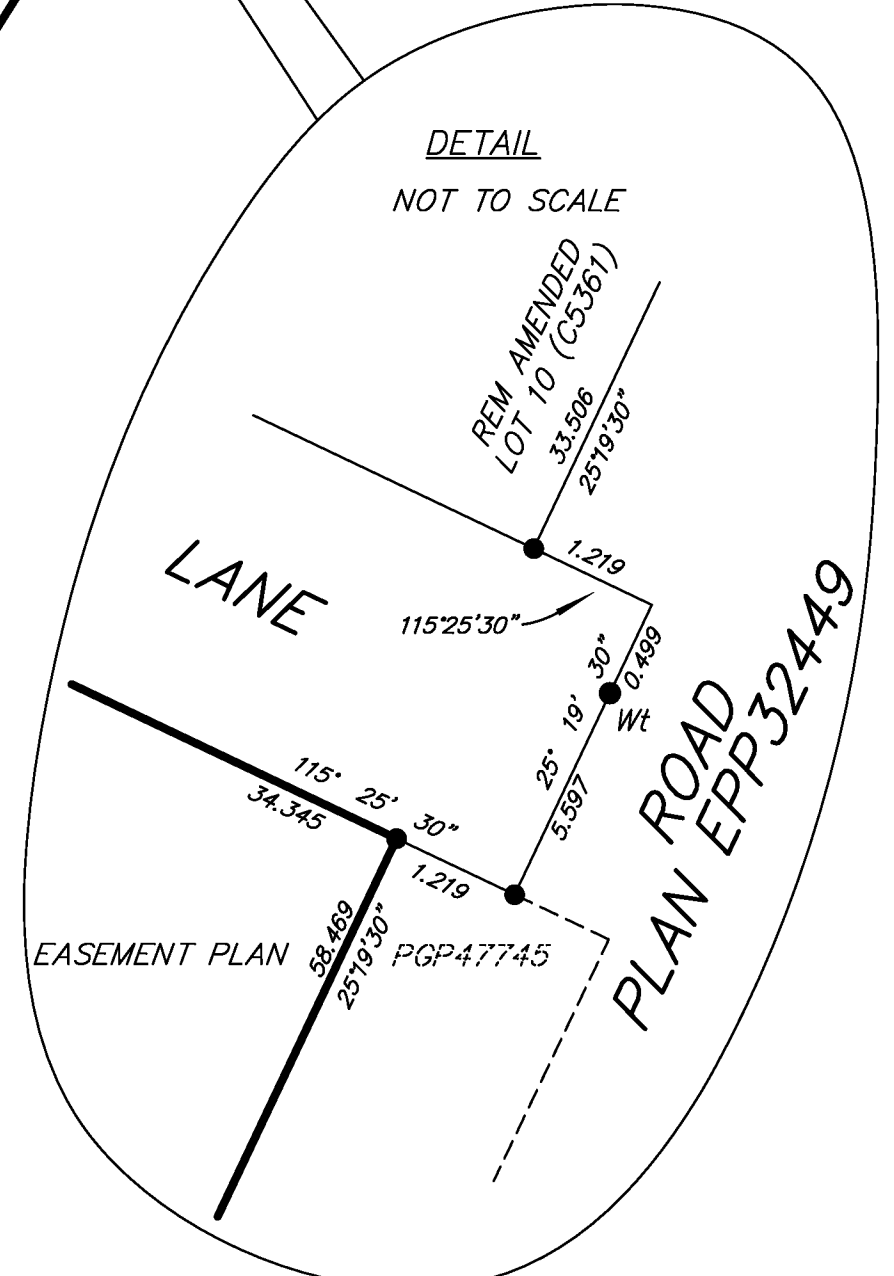
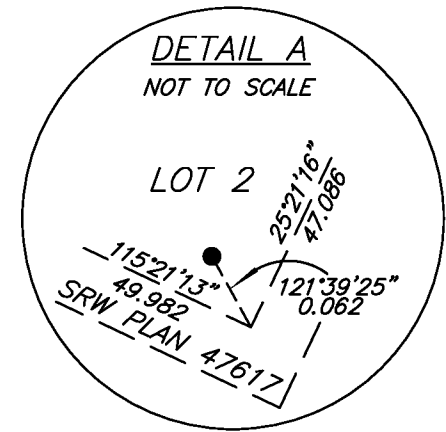
LEGEND

GRID BEARINGS ARE DERIVED FROM OBSERVATIONS BETWEEN GEODETIC CONTROL MONUMENTS 85H1346 AND 85H1090.

- DENOTES CONTROL MONUMENT
- DENOTES LEAD PLUG FOUND
- DENOTES STANDARD IRON POST FOUND
- DENOTES STANDARD IRON POST PLACED

THIS PLAN SHOWS HORIZONTAL GROUND-LEVEL DISTANCES UNLESS OTHERWISE SPECIFIED. TO COMPUTE GRID DISTANCES, MULTIPLY GROUND-LEVEL DISTANCES BY THE AVERAGE COMBINED FACTOR OF 0.9995160 WHICH HAS BEEN DERIVED FROM 85H1346.

NOTE: THIS PLAN SHOWS ONE OR MORE WITNESS POSTS WHICH ARE NOT SET ON THE TRUE CORNER(S).



THIS PLAN LIES WITHIN THE JURISDICTION OF THE APPROVING OFFICER FOR THE CITY OF PRINCE GEORGE. CPG File: #1119

THE FIELD SURVEY REPRESENTED BY THIS PLAN WAS COMPLETED ON THE 8th DAY OF NOVEMBER, 2013. DALE KEOWN, BCLS 468

THIS PLAN LIES WITHIN THE REGIONAL DISTRICT OF FRASER - FORT GEORGE.

McElhanney
 McElhanney Associates
 Land Surveying Ltd.
 Prince George, B.C.
 E-mail: pgmals@mcclhanney.com
 Ph: (250) 561-2229 Fax: (250) 563-1941

DL- 343	File No. - 5972 S
CPG FILE NO. 1119	R2