

**REFERENCE PLAN TO ACCOMPANY A COVENANT
OVER PARTS OF LOTS 12 TO 21 INCLUSIVE,
DISTRICT LOT 4045, CARIBOO DISTRICT,
PLAN EPP32590.**

PLAN EPP34287

PURSUANT TO SECTION 99(1)(e) OF THE LAND TITLE ACT.
BCGS 93G.096 AND 93G.097

THIS PLAN LIES WITHIN INTEGRATED SURVEY
AREA No. 39, PRINCE GEORGE, NAD83 (CSRS)

THE INTENDED PLOT SIZE OF THIS PLAN IS 432mm IN WIDTH BY
560mm IN HEIGHT (C SIZE) WHEN PLOTTED AT A SCALE OF 1:1000



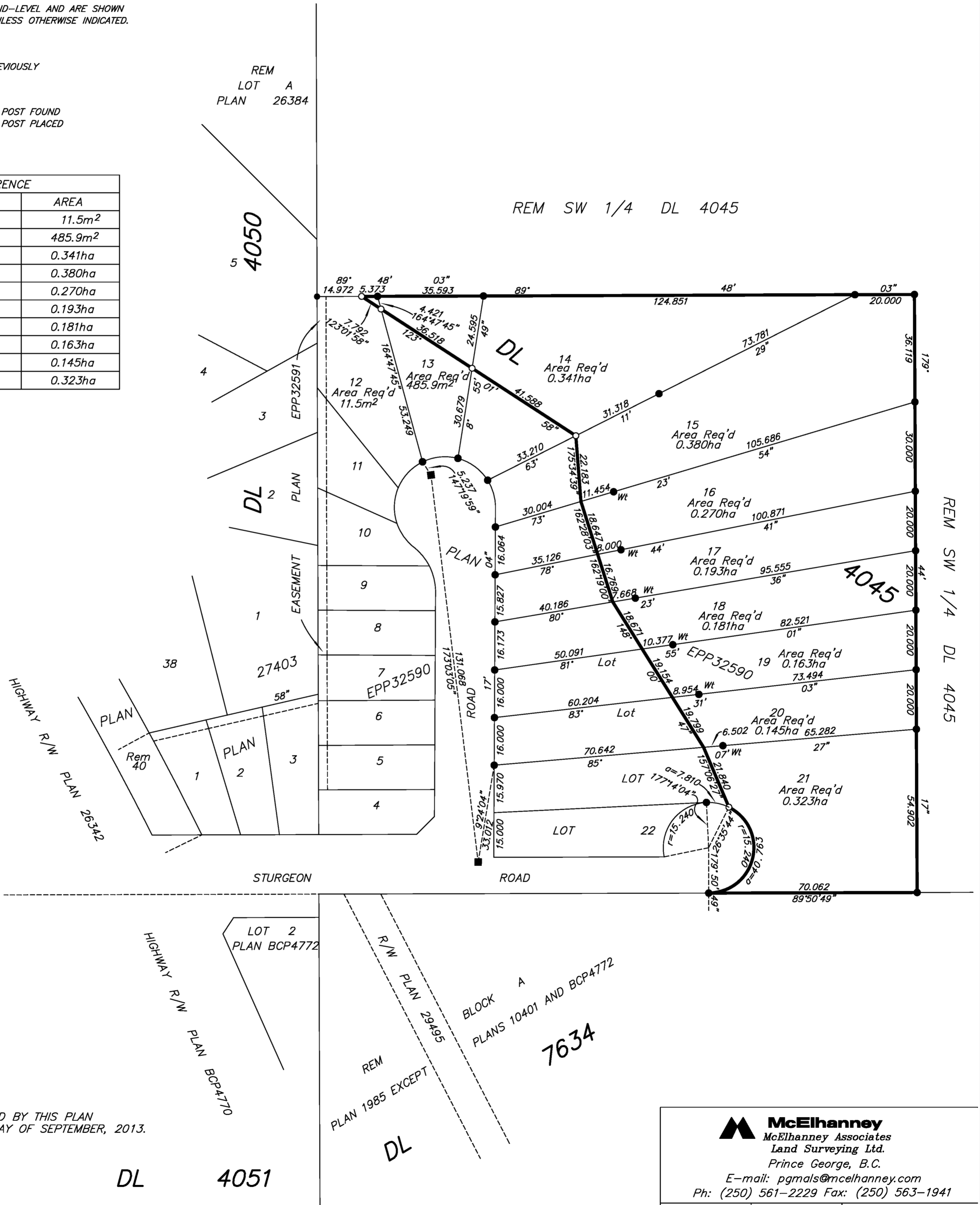
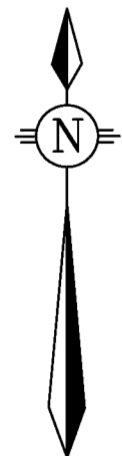
ALL DISTANCES ARE HORIZONTAL GROUND-LEVEL AND ARE SHOWN
IN METRES AND DECIMALS THEREOF, UNLESS OTHERWISE INDICATED.

LEGEND

GRID BEARINGS ARE DERIVED FROM PREVIOUSLY
INTEGRATED PLAN EPP32590.

- DENOTES STANDARD IRON POST FOUND
- DENOTES STANDARD IRON POST PLACED
- Lead Plug Placed

BOOK OF REFERENCE	
DESCRIPTION	AREA
Lot 12, Plan EPP32590	11.5m ²
Lot 13, Plan EPP32590	485.9m ²
Lot 14, Plan EPP32590	0.341ha
Lot 15, Plan EPP32590	0.380ha
Lot 16, Plan EPP32590	0.270ha
Lot 17, Plan EPP32590	0.193ha
Lot 18, Plan EPP32590	0.181ha
Lot 19, Plan EPP32590	0.163ha
Lot 20, Plan EPP32590	0.145ha
Lot 21, Plan EPP32590	0.323ha



THE FIELD SURVEY REPRESENTED BY THIS PLAN
WAS COMPLETED ON THE 4th DAY OF SEPTEMBER, 2013.
DALE KEOWN, BCLS 468

McElhanney
McElhanney Associates
Land Surveying Ltd.
Prince George, B.C.
E-mail: pgmals@mcelhanney.com
Ph: (250) 561-2229 Fax: (250) 563-1941

DL- 4050	File No. - 5991-COV
----------	---------------------

THIS PLAN LIES WITHIN THE REGIONAL DISTRICT OF FRASER - FORT GEORGE.