

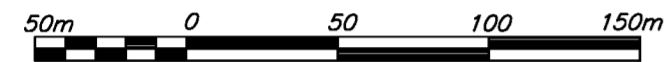
**SUBDIVISION PLAN OF PART OF THE
EAST 1/2 OF THE SOUTH 1/2 OF
DISTRICT LOT 1597, CARIBOO DISTRICT, EXCEPT PLANS
22937, PGP38198, BCP30136 AND BCP40295.**

PLAN EPP33973

BCGS 936.086

INTEGRATED SURVEY AREA No. 39, PRINCE GEORGE, NAD83 (CSRS)

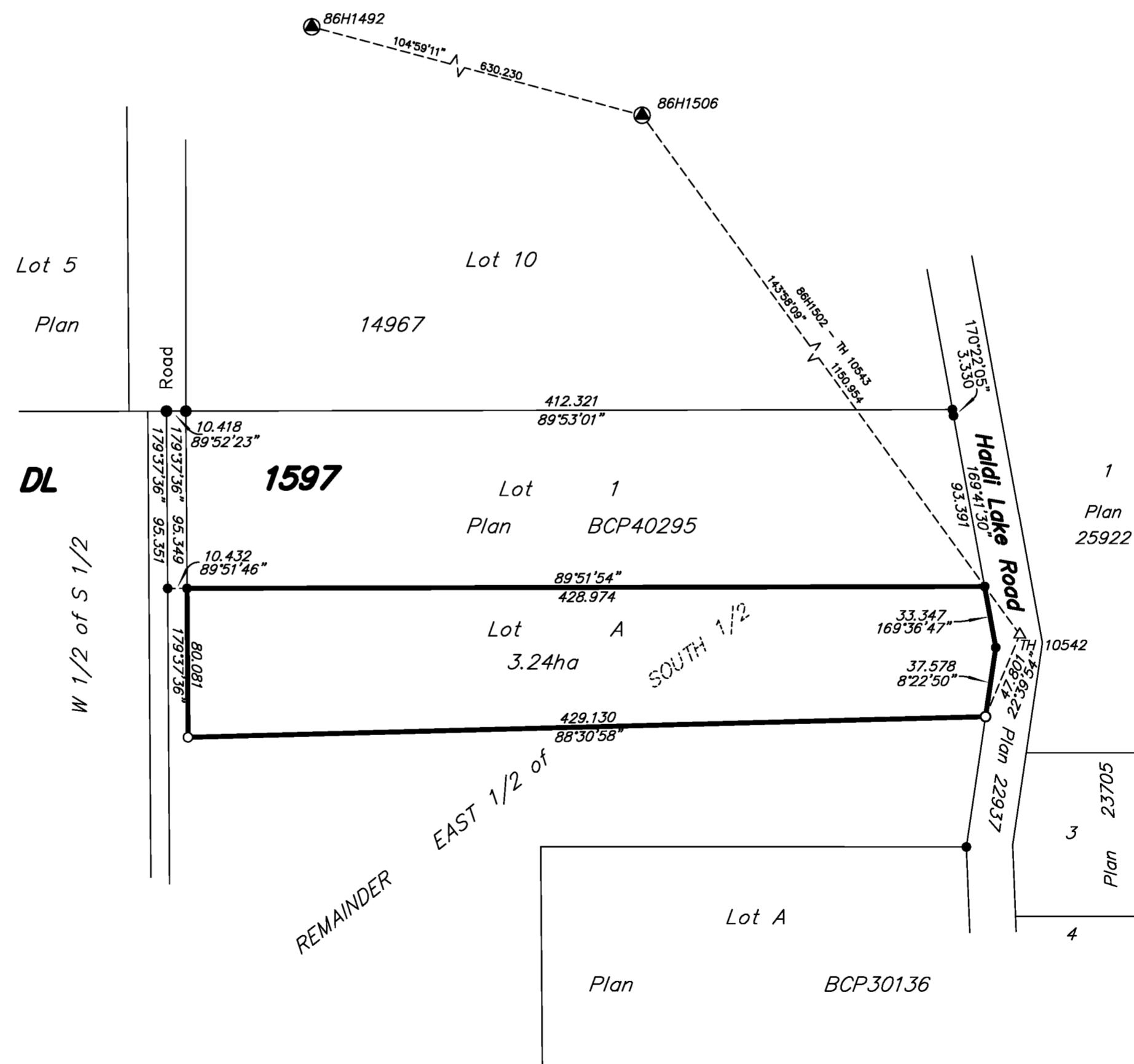
THE INTENDED PLOT SIZE OF THIS PLAN IS 560mm IN WIDTH BY
432mm IN HEIGHT (C SIZE) WHEN PLOTTED AT A SCALE OF 1:2500



ALL DISTANCES ARE HORIZONTAL GROUND-LEVEL AND ARE SHOWN
IN METRES AND DECIMALS THEREOF, UNLESS OTHERWISE INDICATED.

LEGEND

THIS PLAN SHOWS HORIZONTAL GROUND-LEVEL DISTANCES, UNLESS
OTHERWISE SPECIFIED. TO COMPUTE GRID DISTANCES, MULTIPLY
GROUND-LEVEL DISTANCES BY THE AVERAGE COMBINED FACTOR OF
0.9994817 WHICH HAS BEEN DERIVED FROM 86H1492, 86H1502 AND TH 10542.



THIS PLAN LIES WITHIN THE JURISDICTION OF THE
APPROVING OFFICER FOR THE CITY OF PRINCE GEORGE.
CPG File: SD100416

THE FIELD SURVEY REPRESENTED BY THIS PLAN
WAS COMPLETED ON THE 22nd DAY OF AUGUST, 2013.
DALE KEOWN, BCLS 468

THIS PLAN LIES WITHIN THE REGIONAL DISTRICT OF FRASER - FORT GEORGE.

McElhanney
McElhanney Associates
Land Surveying Ltd.
Prince George, B.C.

E-mail: pgmals@mcelhanney.com
Ph: (250) 561-2229 Fax: (250) 563-1941

DL - 1597	File No. - 6079-S
CPG - SD100416	