

**REFERENCE PLAN OF ROAD DEDICATION
OVER LOT B, DL 343, CARIBOO DISTRICT,
PLAN 22763.**

PLAN EPP33866

BCGS 93G.097

PURSUANT TO SECTION 107 OF THE LAND TITLE ACT.

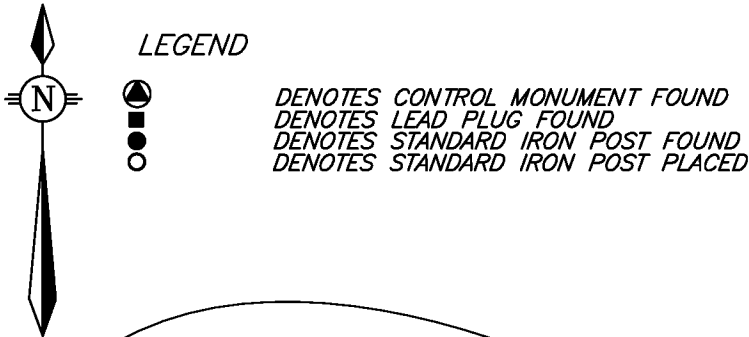
INTEGRATED SURVEY AREA No. 39, PRINCE GEORGE, NAD83 (CSRS)

THE INTENDED PLOT SIZE OF THIS PLAN IS 280mm IN WIDTH BY 432mm IN HEIGHT (B SIZE) WHEN PLOTTED AT A SCALE OF 1:1500



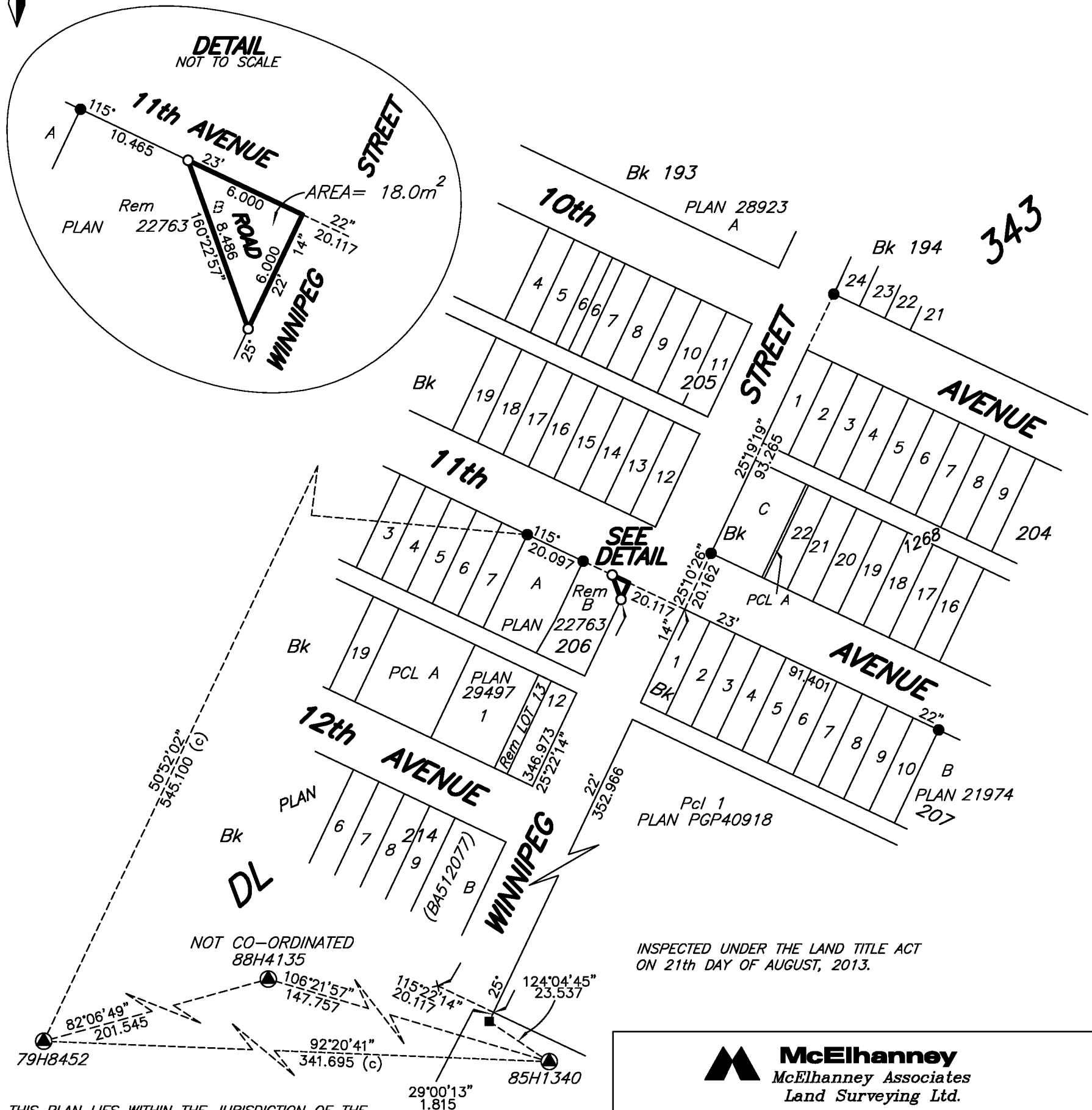
ALL DISTANCES ARE SHOWN IN METRES AND DECIMALS THEREOF, UNLESS OTHERWISE INDICATED.

THIS PLAN SHOWS HORIZONTAL GROUND-LEVEL DISTANCES, UNLESS OTHERWISE SPECIFIED. TO COMPUTE GRID DISTANCES, MULTIPLY GROUND-LEVEL DISTANCES BY THE AVERAGE COMBINED FACTOR OF 0.9995128 WHICH HAS BEEN DERIVED FROM 85H1340 AND 79H8452.



LEGEND

- DENOTES CONTROL MONUMENT FOUND
- ◐ DENOTES LEAD PLUG FOUND
- ◑ DENOTES STANDARD IRON POST FOUND
- DENOTES STANDARD IRON POST PLACED



INSPECTED UNDER THE LAND TITLE ACT
ON 21th DAY OF AUGUST, 2013.

THIS PLAN LIES WITHIN THE JURISDICTION OF THE
APPROVING OFFICER FOR THE CITY OF PRINCE GEORGE.
CPG File: ROAD TRUNCATION

THE FIELD SURVEY REPRESENTED BY THIS PLAN
WAS COMPLETED ON THE 7th DAY OF NOVEMBER, 2011.
DALE KEOWN, BCLS 468

THIS PLAN LIES WITHIN THE REGIONAL DISTRICT OF FRASER - FORT GEORGE.

McElhanney
McElhanney Associates
Land Surveying Ltd.
Prince George, B.C.

E-mail: pgmals@mcElhanney.com
Ph: (250) 561-2229 Fax: (250) 563-1941

DL- 343	File No. - 5965 RD
---------	--------------------