

**REFERENCE PLAN TO ACCOMPANY
BYLAW No. 8508, CITY OF PRINCE GEORGE
TO CLOSE PART OF ROAD DEDICATED BY PLAN 18606,
DISTRICT LOT 2440, CARIBOO DISTRICT.
Pursuant to Section 120 of the Land Title Act and Section 40 of the
Community Charter.**

PLAN EPP33847

BCGS 93G.097



The intended plot size of this plan is 560mm in width by 864mm in height (D size) when plotted at a scale of 1:500.

LEGEND

Integrated Survey Area No. 39, City of Prince George, NAD83 (CSRS).

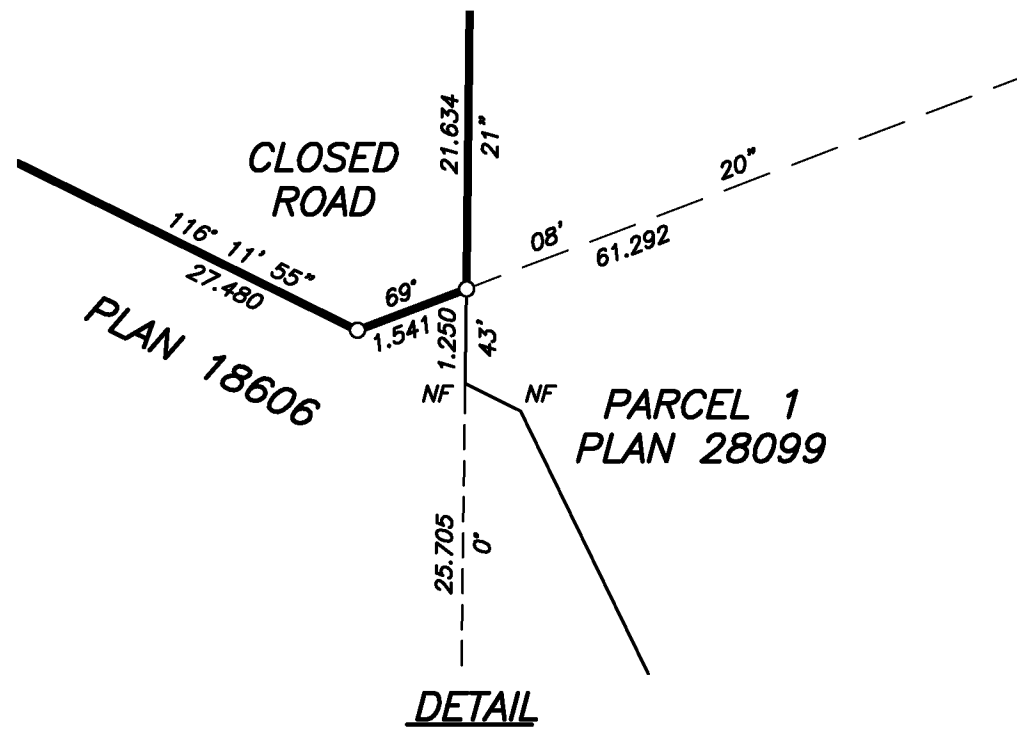
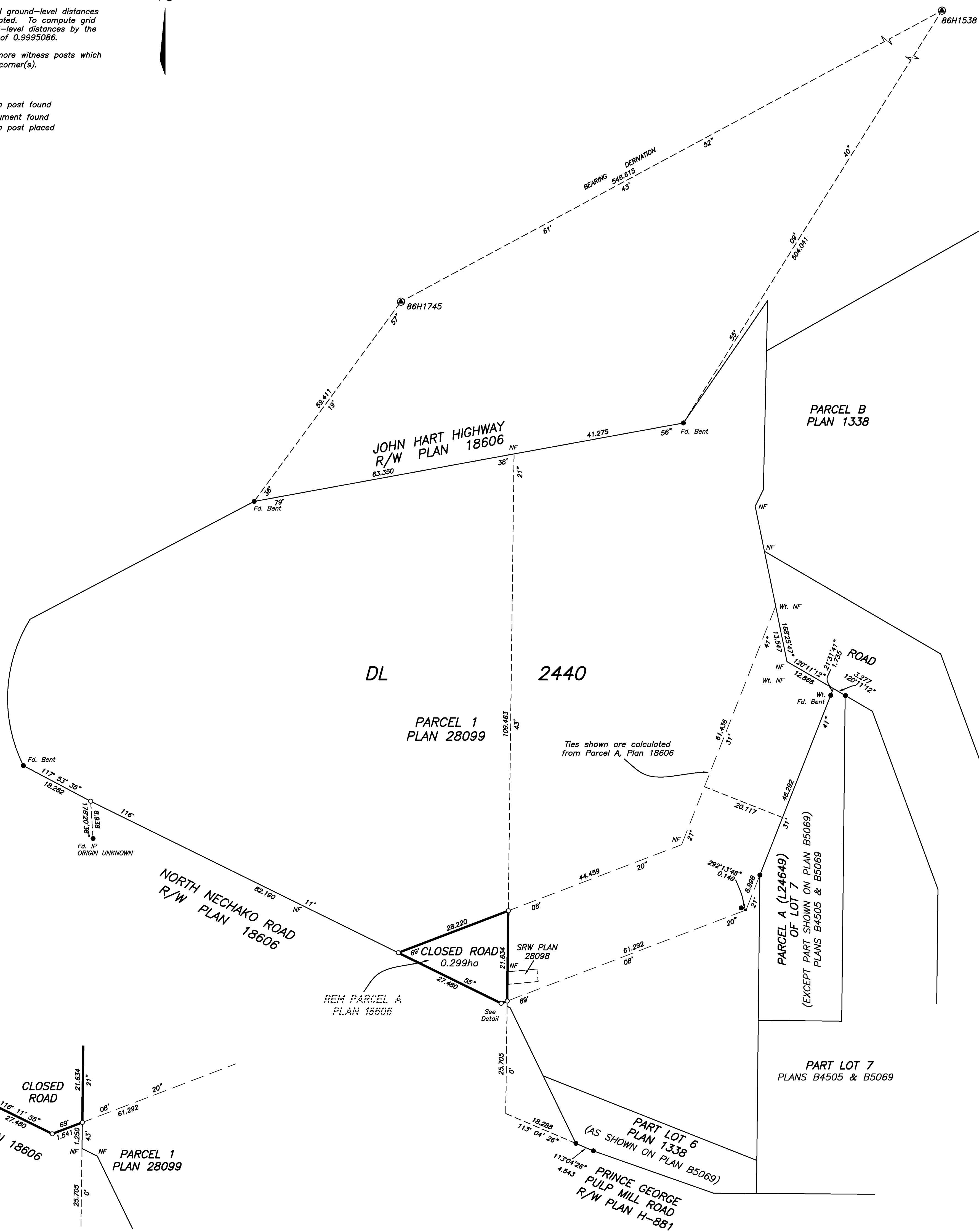
Grid bearings are derived from observations between geodetic control monuments 86H1538 and 86H1745.

This plan shows horizontal ground-level distances except where otherwise noted. To compute grid distances, multiply ground-level distances by the average combined factor of 0.9995086.

This plan shows one or more witness posts which are not set on the true corner(s).

LEGEND

- denotes standard iron post found
- ⊙ denotes control monument found
- denotes standard iron post placed



This plan lies within the Regional District of Fraser-Fort George

The field survey represented by this plan was completed on the 28th day of June, 2013.
Tyler Mikkelsen, BCLS 860

FOCUS
FCS Land Services Limited Partnership
780 - 3rd Avenue, Prince George, BC V2L 3Z5
PROJECT REF./DOMINO No.
010043509-SDSU01-R02