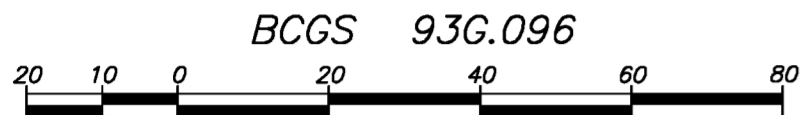


Reference Plan of Part of Parcel A (N40600) of Lot 4 Block 10 District Lot 2508 Cariboo District Plan 837

Pursuant to Section 99(1)(e) Land Title Act For Access Purposes



The intended plot size of this plan is 560mm in width by 432mm in height (C size) when plotted at a scale of 1:1000.

This plan lies within Integrated Survey Area No. 39 Prince George, NAD 83 (CSRS)

LEGEND

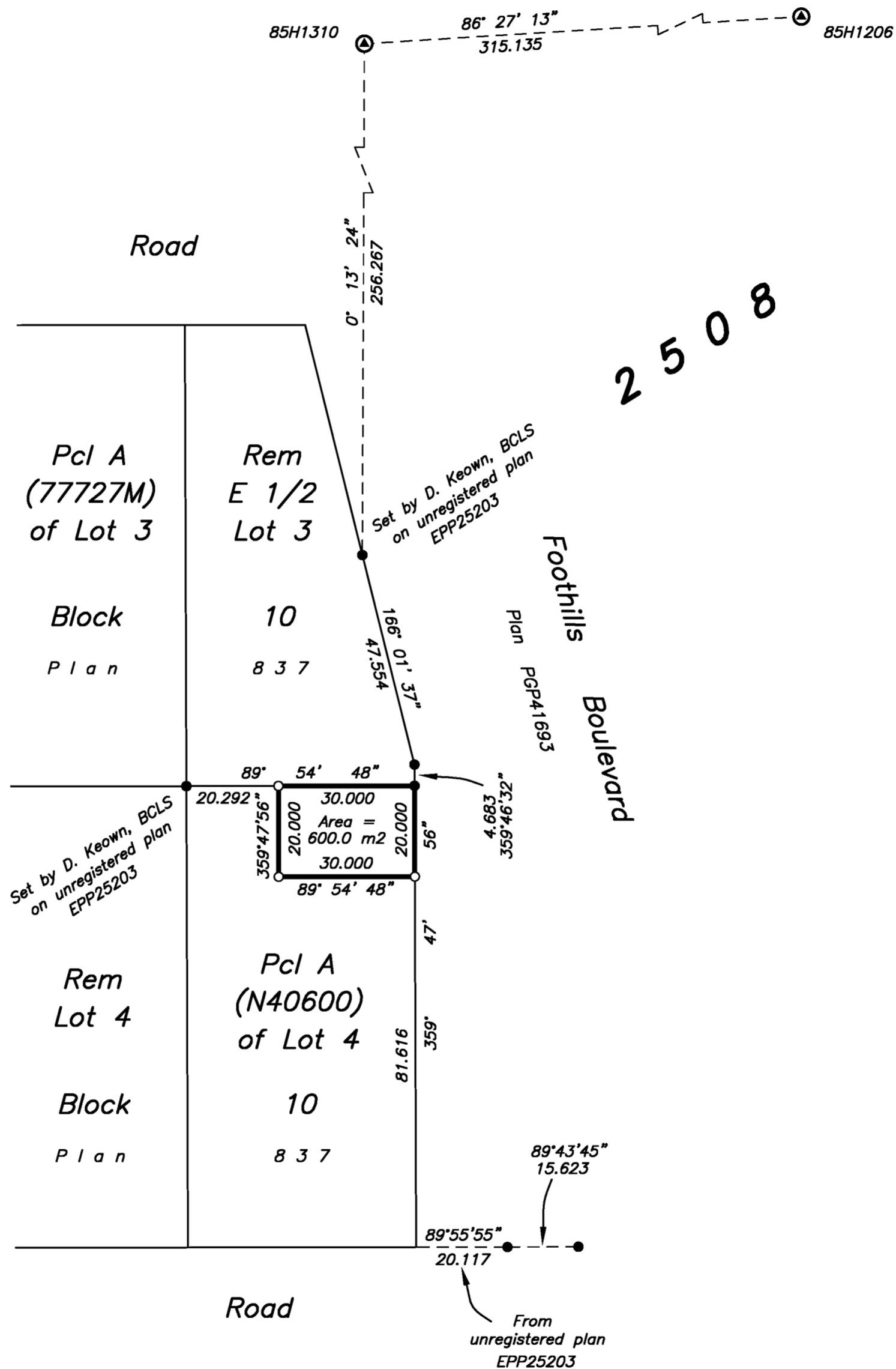
Grid bearings are derived from observations between control monuments 85H1310 and 85H1206.

This plan shows horizontal ground-level distances unless otherwise specified. To compute grid distances, multiply ground-level distances by the a combined factor of 0.999510, which has been derived from control monument 85H1310.

- ⊙ denotes Control Monument found
- denotes standard iron post found
- denotes standard iron post placed
- m2 denotes square metres



DL



C:\Reifen\01 Projects\45398 Hydro Access Easement\CAD\010045398_LE01R0.dwg 2013/09/12 - 15:11

FOCUS
 FCS Land Services Limited Partnership
 780, 3rd Avenue, Prince George, BC
 PROJECT REF./DRAWING No.
 010045398 LE01R0

This plan lies within the Fraser Fort George Regional District
 The field survey represented by this plan was completed on the 31st day of July, 2013.
 Tyler Mikkelsen, BCLS 860