

EXPLANATORY PLAN OF COVENANT LYING WITHIN PART OF THE COMMON PROPERTY, DISTRICT LOTS 905 AND 2003, CARIBOO DISTRICT, PLAN EPS1568.

PLAN EPP33556

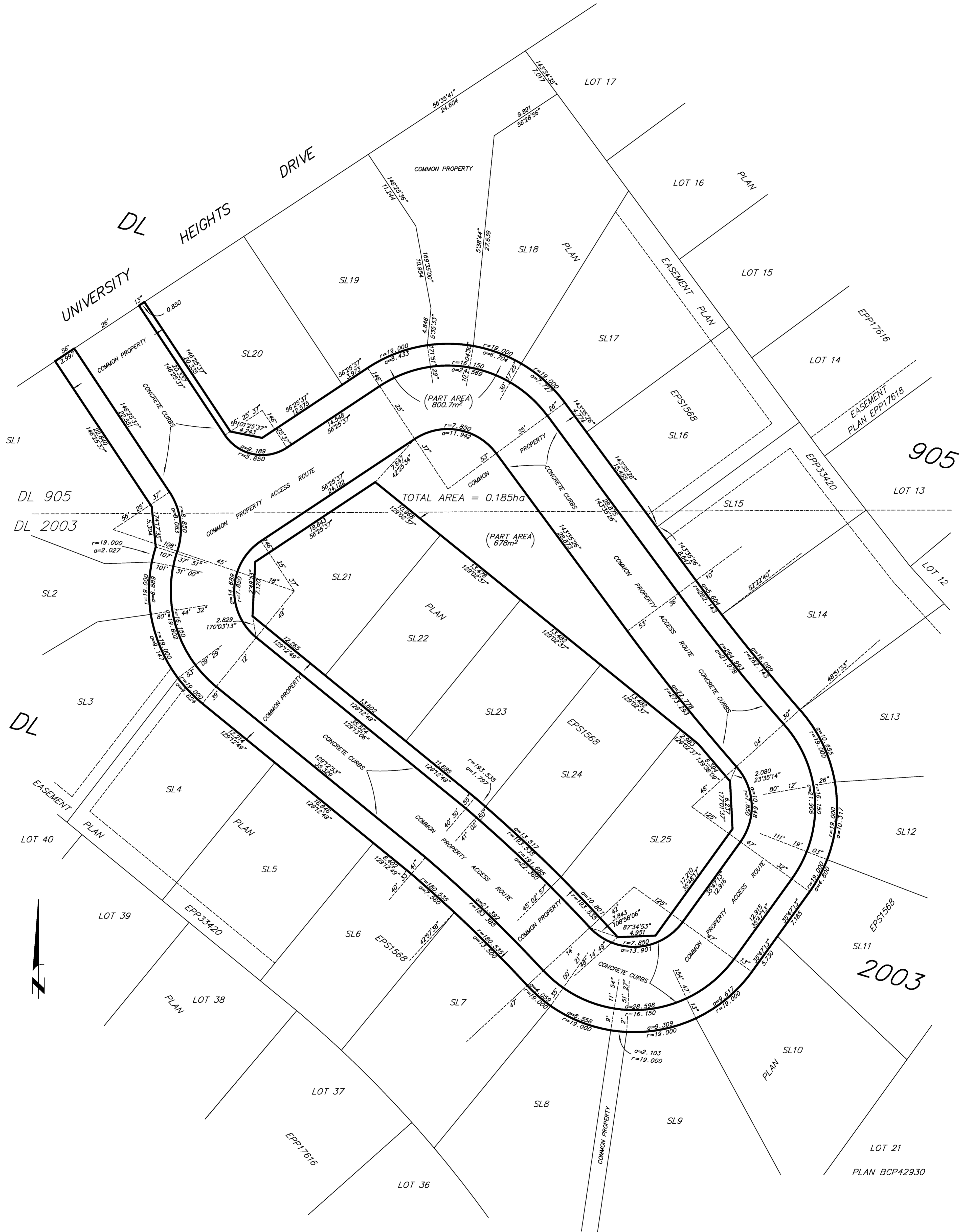
BCGS 93G.087

PURSUANT TO SECTION 99(1)(e) OF THE LAND TITLE ACT.

INTEGRATED SURVEY AREA No. 39, PRINCE GEORGE, NAD83 (CSRS)

LEGEND

GRID BEARINGS ARE DERIVED FROM PREVIOUSLY INTEGRATED PLAN EPP30386.
 THE INTENDED PLOT SIZE OF THIS PLAN IS 580mm IN WIDTH BY 864mm IN HEIGHT (D SIZE) WHEN PLOTTED AT A SCALE OF 1:250
 ALL DISTANCES ARE HORIZONTAL GROUND-LEVEL AND ARE SHOWN IN METRES AND DECIMALS THEREOF, UNLESS OTHERWISE INDICATED.



THIS PLAN IS BASED ON THE FOLLOWING LAND TITLE AND SURVEY AUTHORITY OF BC RECORDS: EPS1568 DALE KEOWN, BCLS 488 20th DAY OF SEPTEMBER, 2013

THIS PLAN LIES WITHIN THE REGIONAL DISTRICT OF FRASER - FORT GEORGE.

McElhanney
 McElhanney Associates
 Land Surveying Ltd.
 Prince George, B.C.
 E-mail: pgmals@mcElhanney.com
 Ph: (250) 561-2229 Fax: (250) 563-1941

DL - 905	File No. - 6097-COV
----------	---------------------