

# REFERENCE PLAN OF EASEMENT PLAN OVER PARTS OF STRATA 3 TO 5, AND 12 TO 17 INCLUSIVE, DISTRICT LOTS 905 AND 2003, CARIBOO DISTRICT, PLAN EPS1568.

PLAN EPP33420

PURSUANT TO SECTION 99(1)(e) OF THE LAND TITLE ACT.

BCGS 93G.087

INTEGRATED SURVEY AREA No. 39, PRINCE GEORGE, NAD83 (CSRS)

THE INTENDED PLOT SIZE OF THIS PLAN IS 560mm IN WIDTH BY 432mm IN HEIGHT (C SIZE) WHEN PLOTTED AT A SCALE OF 1:500



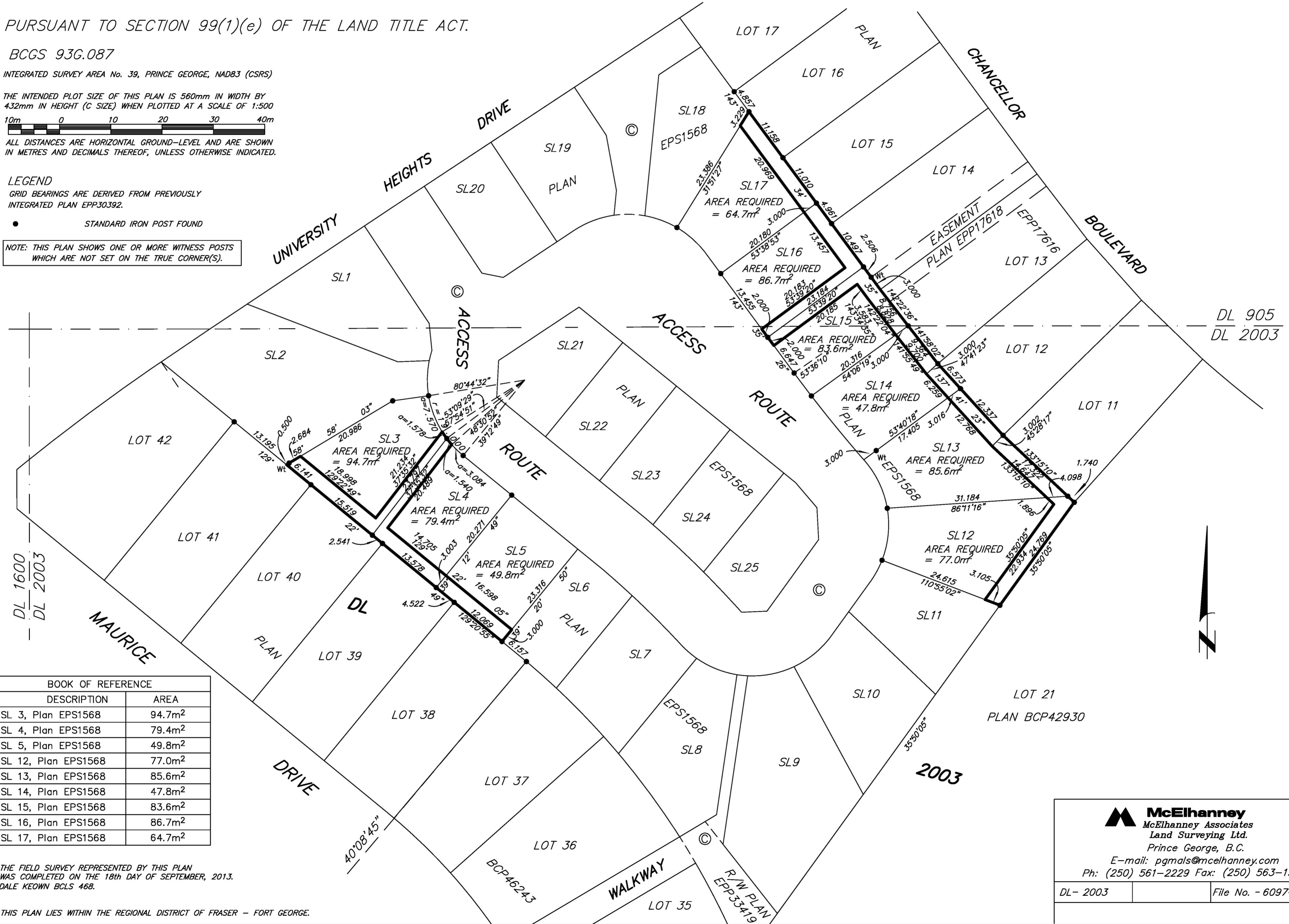
ALL DISTANCES ARE HORIZONTAL GROUND-LEVEL AND ARE SHOWN IN METRES AND DECIMALS THEREOF, UNLESS OTHERWISE INDICATED.

**LEGEND**

GRID BEARINGS ARE DERIVED FROM PREVIOUSLY INTEGRATED PLAN EPP30392.

● STANDARD IRON POST FOUND

NOTE: THIS PLAN SHOWS ONE OR MORE WITNESS POSTS WHICH ARE NOT SET ON THE TRUE CORNER(S).



BOOK OF REFERENCE	
DESCRIPTION	AREA
SL 3, Plan EPS1568	94.7m <sup>2</sup>
SL 4, Plan EPS1568	79.4m <sup>2</sup>
SL 5, Plan EPS1568	49.8m <sup>2</sup>
SL 12, Plan EPS1568	77.0m <sup>2</sup>
SL 13, Plan EPS1568	85.6m <sup>2</sup>
SL 14, Plan EPS1568	47.8m <sup>2</sup>
SL 15, Plan EPS1568	83.6m <sup>2</sup>
SL 16, Plan EPS1568	86.7m <sup>2</sup>
SL 17, Plan EPS1568	64.7m <sup>2</sup>

THE FIELD SURVEY REPRESENTED BY THIS PLAN WAS COMPLETED ON THE 18th DAY OF SEPTEMBER, 2013. DALE KEOWN BCLS 468.

THIS PLAN LIES WITHIN THE REGIONAL DISTRICT OF FRASER - FORT GEORGE.

**McElhanney**  
 McElhanney Associates  
 Land Surveying Ltd.  
 Prince George, B.C.  
 E-mail: pgmals@mcelhanney.com  
 Ph: (250) 561-2229 Fax: (250) 563-1941

DL - 2003	File No. - 6097-E
-----------	-------------------