

**RIGHT OF WAY PLAN OVER PART OF LOT 1,
DISTRICT LOTS 905 AND 2003, CARIBOO DISTRICT,
PLAN EPP30392.**

PLAN EPP33419

PURSUANT TO SECTION 113 OF THE LAND TITLE ACT.

BCGS 93G.087

INTEGRATED SURVEY AREA No. 39, PRINCE GEORGE, HA083 (CSRS)

THE INTENDED PLOT SIZE OF THIS PLAN IS 560mm IN WIDTH BY
432mm IN HEIGHT (C SIZE) WHEN PLOTTED AT A SCALE OF 1:500

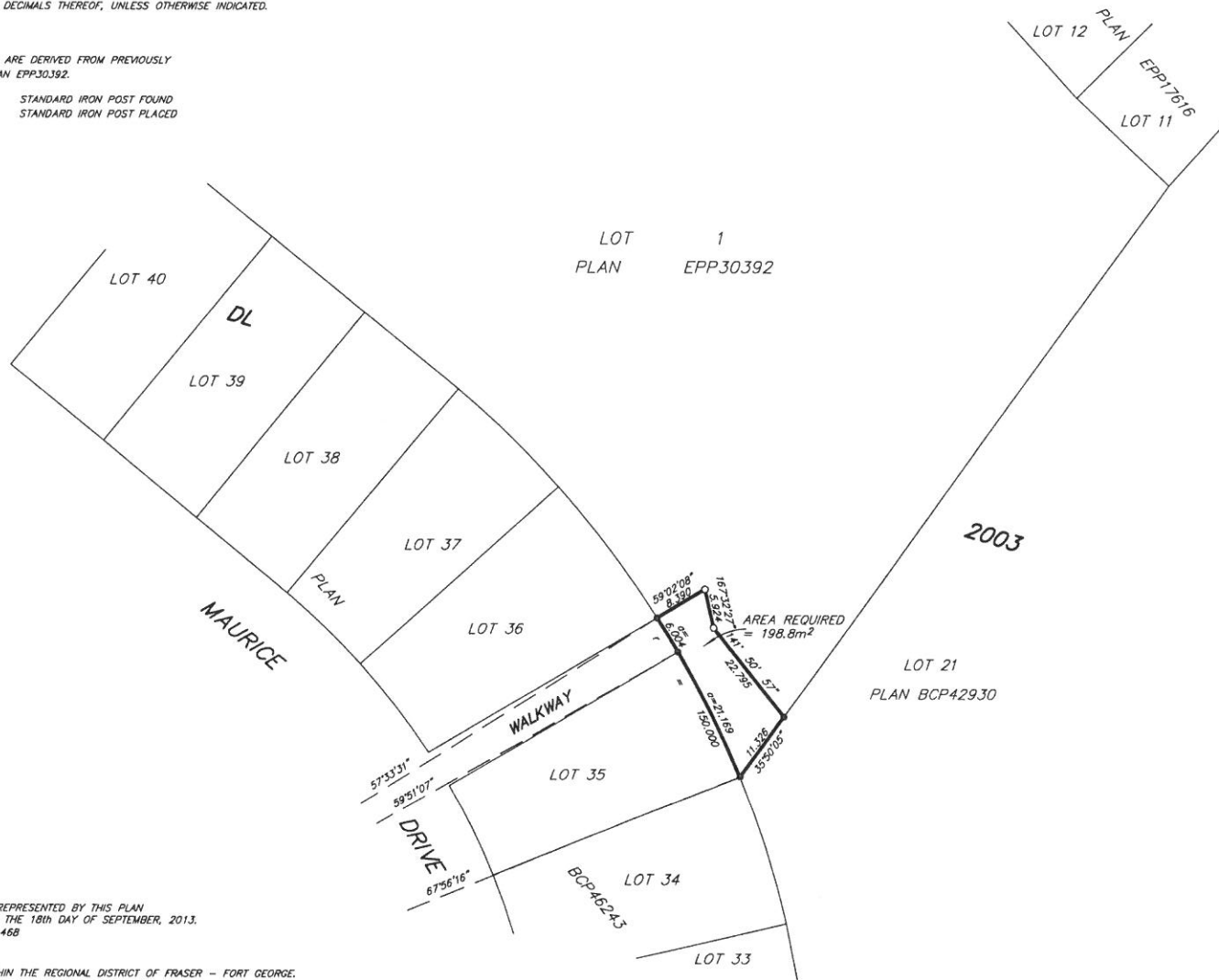
10m 0 10 20 30 40m

ALL DISTANCES ARE HORIZONTAL GROUND-LEVEL AND ARE SHOWN
IN METRES AND DECIMALS THEREOF, UNLESS OTHERWISE INDICATED.

LEGEND

GRID BEARINGS ARE DERIVED FROM PREVIOUSLY
INTEGRATED PLAN EPP30392.

- STANDARD IRON POST FOUND
- STANDARD IRON POST PLACED



THE FIELD SURVEY REPRESENTED BY THIS PLAN
WAS COMPLETED ON THE 18th DAY OF SEPTEMBER, 2013.
DALE KEOWN, BCLS 468

THIS PLAN LIES WITHIN THE REGIONAL DISTRICT OF FRASER - FORT GEORGE.

 McElhanney McElhanney Associates Land Surveying Ltd. Prince George, B.C. E-mail: pgmals@mcclhanney.com Ph: (250) 561-2229 Fax: (250) 563-1941	
DL- 2003	File No. - 6097-RW