

EXPLANATORY PLAN OF EASEMENT OVER PARTS OF LOTS A AND B, DISTRICT LOT 937, CARIBOO DISTRICT, PLAN EPP33200.

PLAN EPP33201

PURSUANT TO SECTION 99(1)(e) OF THE LAND TITLE ACT.
BCGS 93G.097

INTEGRATED SURVEY AREA No. 39, PRINCE GEORGE, NAD83 (CSRS)

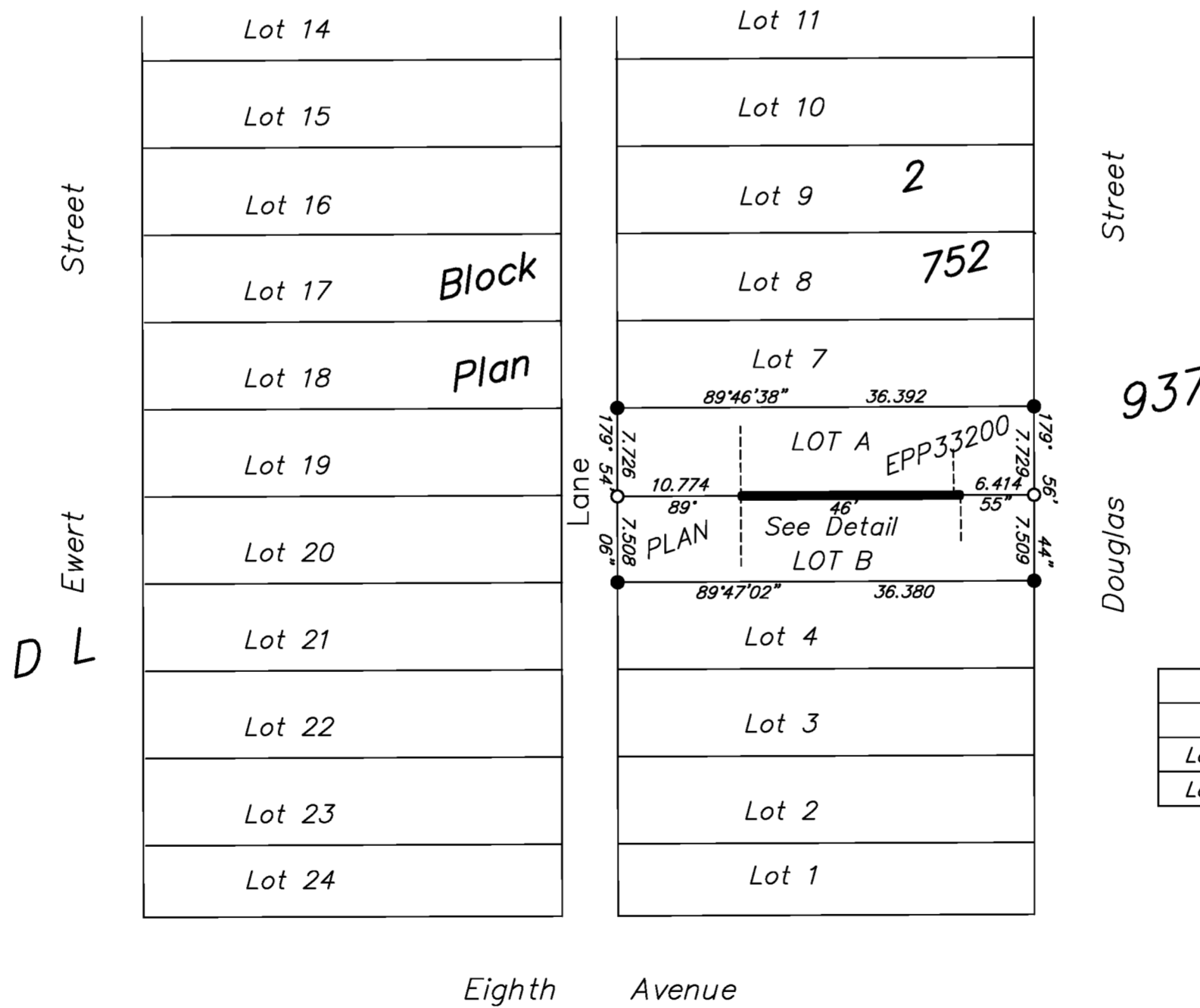
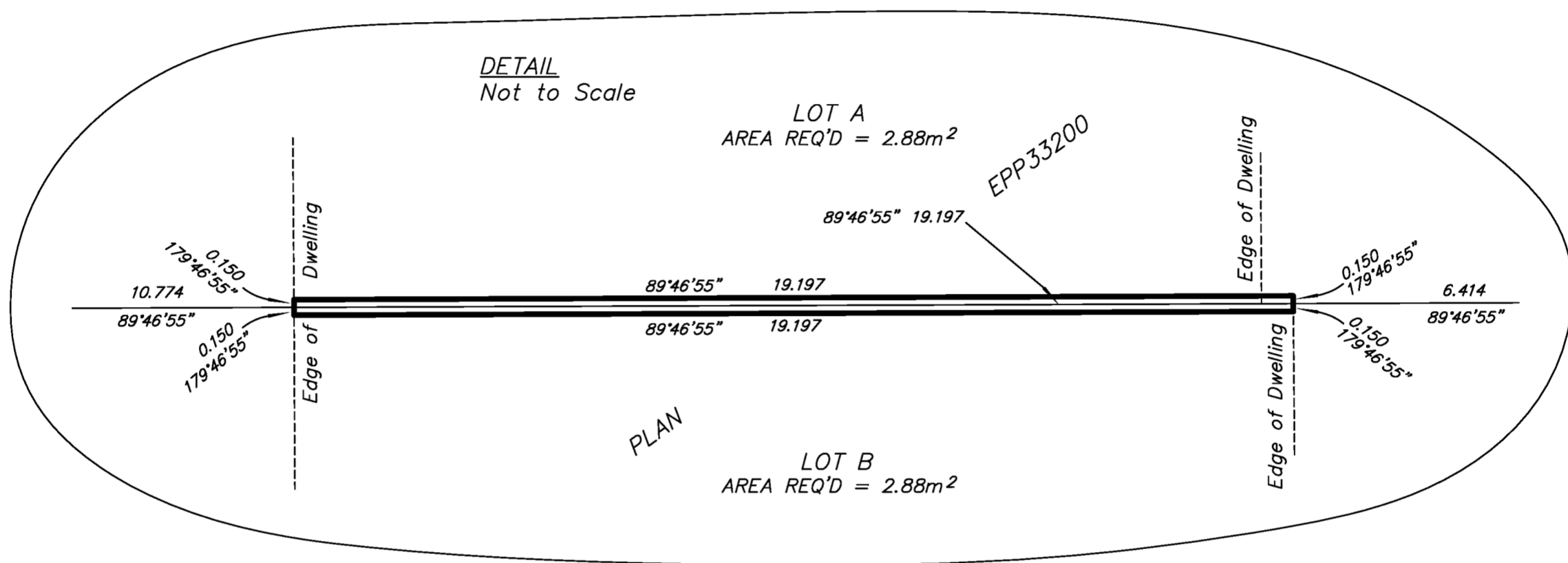
THE INTENDED PLOT SIZE OF THIS PLAN IS 432mm IN WIDTH BY 560mm IN HEIGHT (C SIZE) WHEN PLOTTED AT A SCALE OF 1:500



ALL DISTANCES ARE HORIZONTAL GROUND-LEVEL AND ARE SHOWN IN METRES AND DECIMALS THEREOF, UNLESS OTHERWISE INDICATED.

LEGEND

GRID BEARINGS ARE DERIVED FROM PREVIOUSLY INTEGRATED PLAN EPP9560.



BOOK OF REFERENCE	
DESCRIPTION	AREA
Lot A, Plan EPP33200	2.88m ²
Lot B, Plan EPP33200	2.88m ²

THIS PLAN IS BASED ON THE FOLLOWING LAND TITLE AND SURVEY AUTHORITY OF BC RECORDS: EPP33200

DALE KEOWN, BCLS 468
26th DAY OF JULY, 2013

THIS PLAN LIES WITHIN THE REGIONAL DISTRICT OF FRASER - FORT GEORGE.



McElhanney
McElhanney Associates
Land Surveying Ltd.
Prince George, B.C.

E-mail: pgmals@mcelhanney.com
Ph: (250) 561-2229 Fax: (250) 563-1941

DL- 937	File No. - 6144-PW
---------	--------------------