

SUBDIVISION PLAN OF PARCEL C (BEING A CONSOLIDATION OF LOTS 5 AND 6. SEE BB1693542) BLOCK 2, DISTRICT LOT 937 CARIBOO DISTRICT, PLAN 752.

PLAN EPP33200

BCGS 93G.097

INTEGRATED SURVEY AREA No. 39, PRINCE GEORGE, NAD83 (CSRS)

THE INTENDED PLOT SIZE OF THIS PLAN IS 432mm IN WIDTH BY 560mm IN HEIGHT (C SIZE) WHEN PLOTTED AT A SCALE OF 1:500

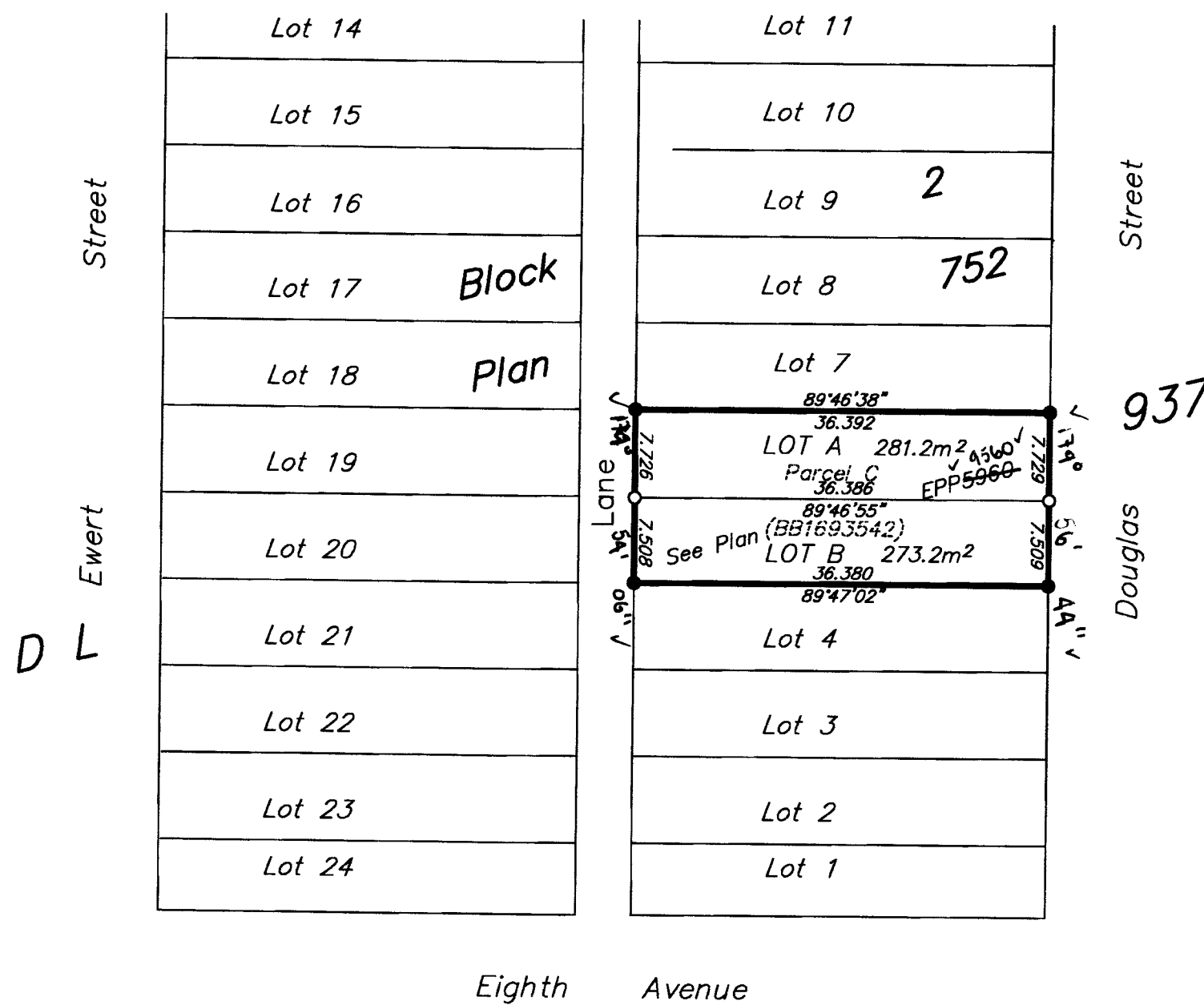


ALL DISTANCES ARE HORIZONTAL GROUND-LEVEL AND ARE SHOWN IN METRES AND DECIMALS THEREOF, UNLESS OTHERWISE INDICATED.

LEGEND

GRID BEARINGS ARE DERIVED FROM PREVIOUSLY INTEGRATED PLAN EPP5560.

- STANDARD IRON POST FOUND
- STANDARD IRON POST PLACED



THIS PLAN LIES WITHIN THE JURISDICTION OF THE APPROVING OFFICER FOR THE CITY OF PRINCE GEORGE. CITY OF PRINCE GEORGE FILE SD100423

THE FIELD SURVEY REPRESENTED BY THIS PLAN WAS COMPLETED BY DALE KEOWN, BCLS 468 ON THE 26th DAY OF JULY, 2010.

THIS PLAN LIES WITHIN THE REGIONAL DISTRICT OF FRASER - FORT GEORGE.

McElhanney
 McElhanney Associates
 Land Surveying Ltd.
 Prince George, B.C.
 E-mail: pgmals@mcElhanney.com
 Ph: (250) 561-2229 Fax: (250) 563-1941

DL- 937	File No. - 6144-S
CPG FILE SD100423	