

# EXPLANATORY PLAN OF EASEMENT OVER PARTS OF LOTS 4 AND 5, BLOCK 259, DISTRICT LOT 343, CARIBOO DISTRICT, PLAN 1268.

PLAN EPP33097

PURSUANT TO SECTION 99(1)(e) OF THE LAND TITLE ACT.  
BCGS 93G.087

THIS PLAN LIES WITHIN INTEGRATED SURVEY AREA No. 39, PRINCE GEORGE, NAD83 (CSRS)

THE INTENDED PLOT SIZE OF THIS PLAN IS 432mm IN WIDTH BY 560mm IN HEIGHT (C SIZE) WHEN PLOTTED AT A SCALE OF 1:100

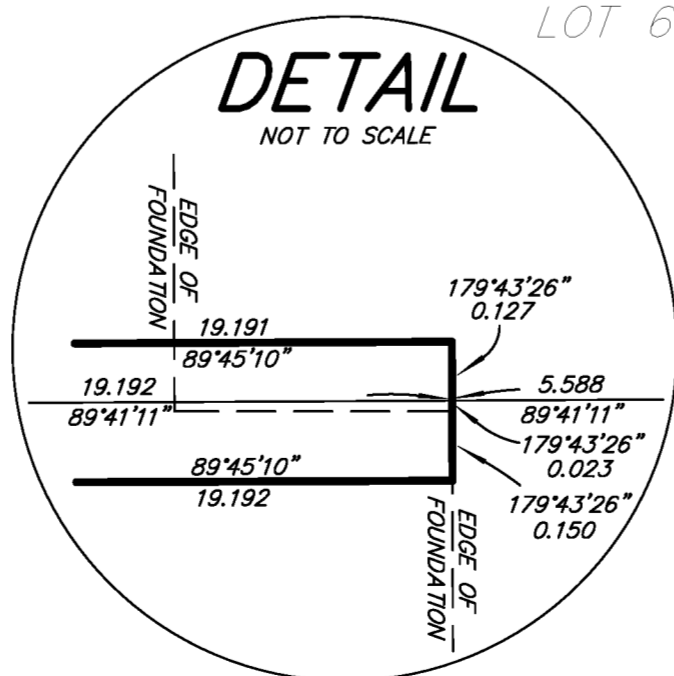
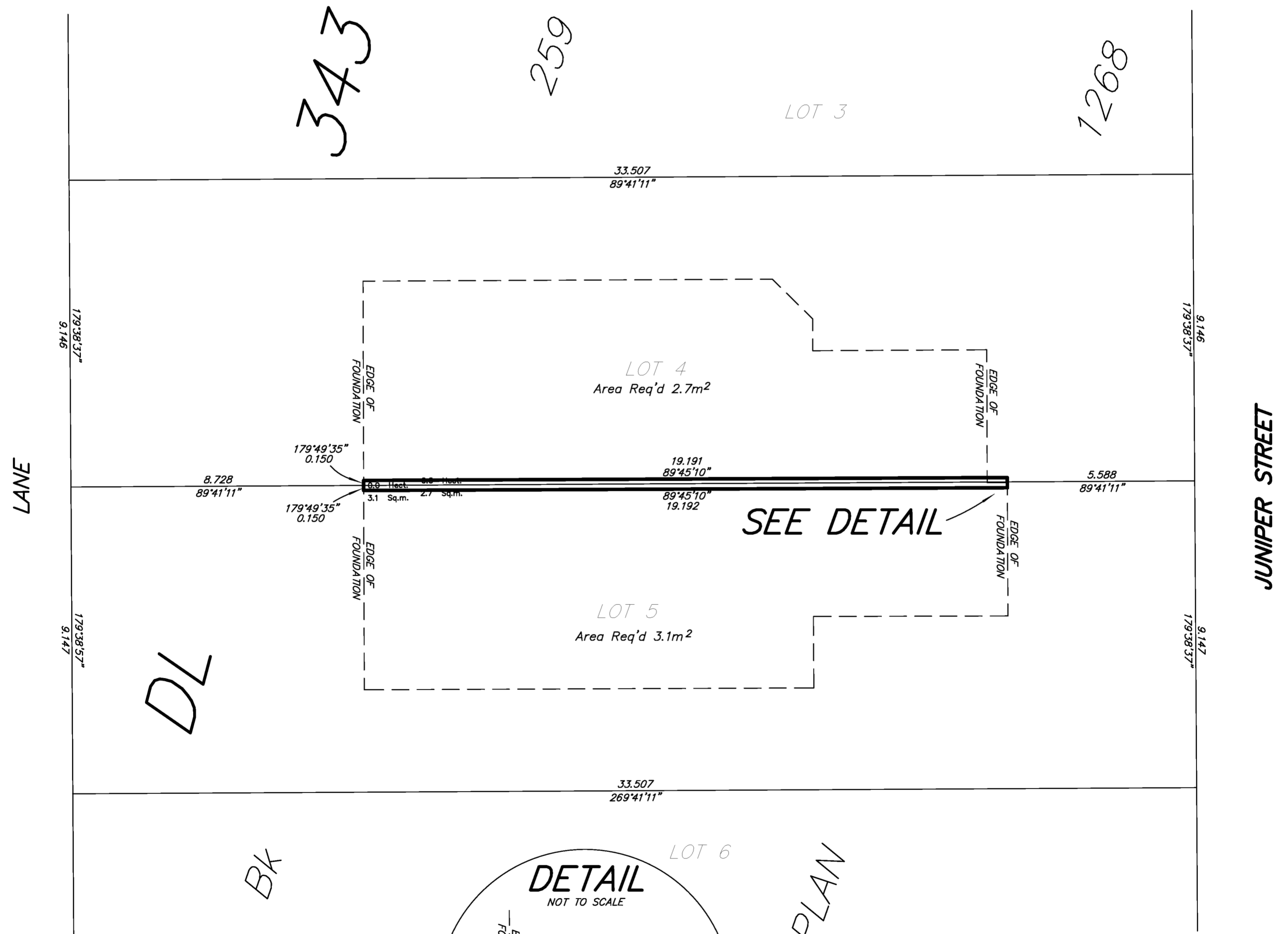


ALL DISTANCES ARE HORIZONTAL GROUND-LEVEL AND ARE SHOWN IN METRES AND DECIMALS THEREOF, UNLESS OTHERWISE INDICATED.

**LEGEND**

GRID BEARINGS ARE DERIVED FROM PREVIOUSLY INTEGRATED PLAN EPP30753.

THIS PLAN SHOWS HORIZONTAL GROUND-LEVEL DISTANCES UNLESS OTHERWISE SPECIFIED. TO COMPUTE GRID DISTANCES, MULTIPLY GROUND-LEVEL DISTANCES BY THE AVERAGE COMBINED FACTOR OF 0.9995147 WHICH HAS BEEN DERIVED FROM 85H1045 AND 85H1083.



BOOK OF REFERENCE	
DESCRIPTION	AREA
Lot 4, Plan EPP30753,	2.7m <sup>2</sup>
Lot 5, Plan EPP30753,	3.1m <sup>2</sup>

THIS PLAN IS BASED ON THE FOLLOWING LAND TITLE AND SURVEY AUTHORITY OF BC RECORDS:  
PLAN EPP30753 AND PLAN 1268  
DALE KEOWN, BCLS  
6th DAY OF JUNE, 2013.

THIS PLAN LIES WITHIN THE REGIONAL DISTRICT OF FRASER - FORT GEORGE.

**McElhanney**  
McElhanney Associates  
Land Surveying Ltd.  
Prince George, B.C.  
E-mail: pgmals@mcelhanney.com  
Ph: (250) 561-2229 Fax: (250) 563-1941

DL- 343	File No. - 6013-46 PW
JUNE 6, 2013	