

EXPLANATORY PLAN OF EASEMENT OVER PARTS OF LOT 8 AND LOT 9, DL 2101, CARIBOO DISTRICT, PLAN 20592.

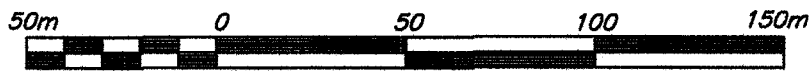
PLAN EPP32680

BCGS 93G.096

PURSUANT TO SECTION 99(1)(e) OF THE LAND TITLE ACT.

INTEGRATED SURVEY AREA No. 39, PRINCE GEORGE, NAD83 (CSRS)

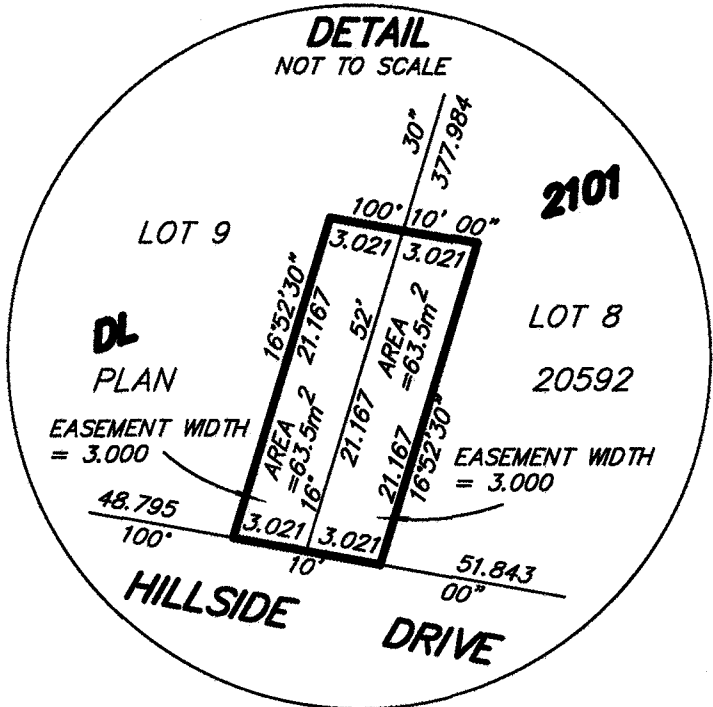
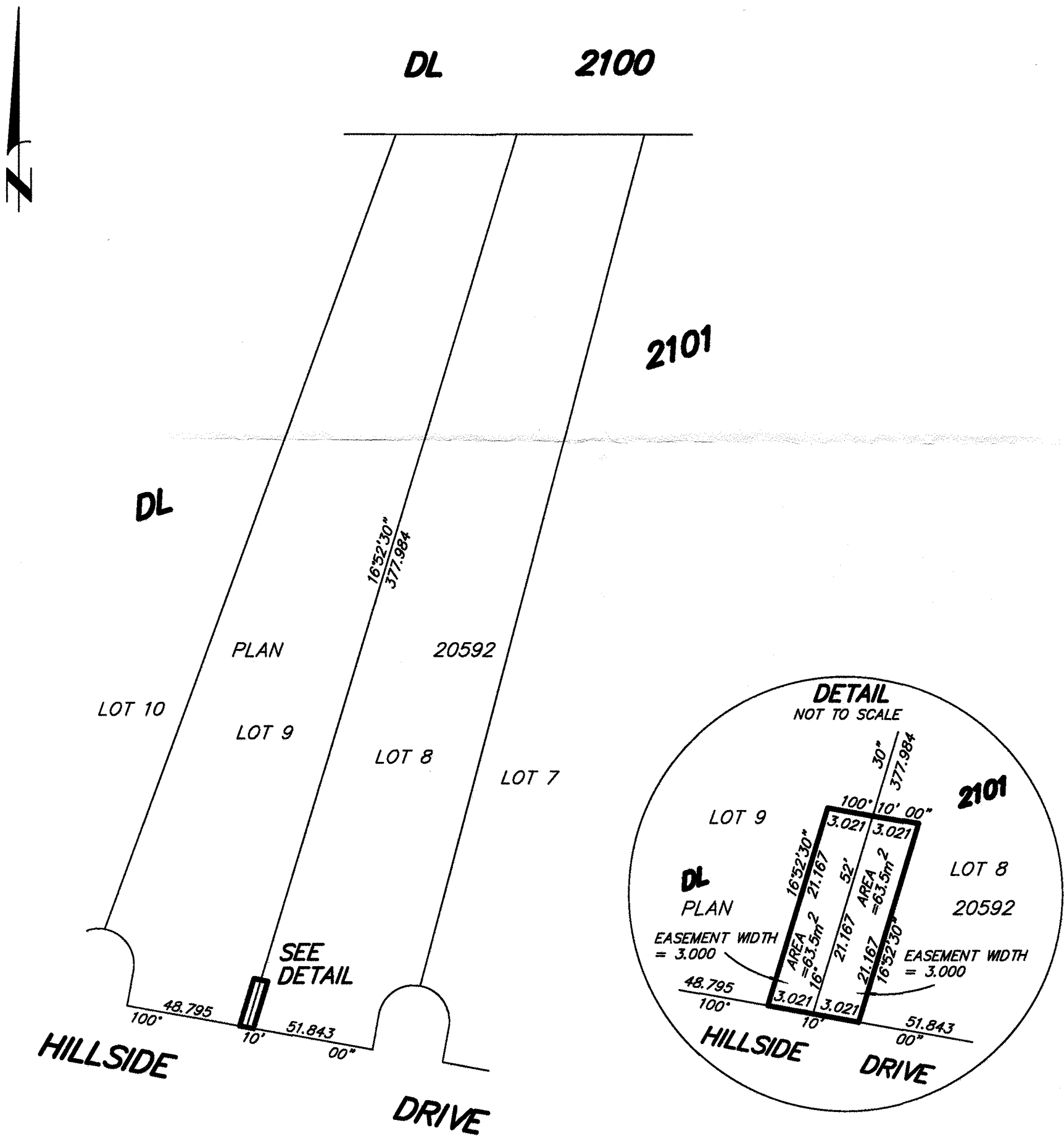
THE INTENDED PLOT SIZE OF THIS PLAN IS 280mm IN WIDTH BY 432mm IN HEIGHT (B SIZE) WHEN PLOTTED AT A SCALE OF 1:2000



ALL DISTANCES ARE HORIZONTAL GROUND-LEVEL AND ARE SHOWN IN METRES AND DECIMALS THEREOF, UNLESS OTHERWISE INDICATED.

LEGEND

ASTRONOMIC BEARINGS ARE DERIVED FROM PLAN 20592.



THIS PLAN IS BASED ON THE FOLLOWING LAND TITLE AND SURVEY AUTHORITY OF BC RECORDS: PLAN 20592. DARREN KENT, BCLS 904 11th DAY OF JULY, 2013

THIS PLAN LIES WITHIN THE REGIONAL DISTRICT OF FRASER - FORT GEORGE.



McElhanney
McElhanney Associates
Land Surveying Ltd.
Prince George, B.C.

E-mail: pgmalls@mcelhanney.com
Ph: (250) 561-2229 Fax: (250) 563-1941

DL- 2101

File No. - 6013-89-E