

REFERENCE PLAN OF EASEMENT WITHIN LOTS 1 TO 3 AND 5 TO 12, DISTRICT LOTS 4045 AND 4050, CARIBOO DISTRICT, PLAN EPP32590.

PLAN EPP32591

PURSUANT TO SECTION 99(1)(e) OF THE LAND TITLE ACT.

BCGS 93G.096 AND 93G.097

THE INTENDED PLOT SIZE OF THIS PLAN IS 432mm IN WIDTH BY 560mm IN HEIGHT (C SIZE) WHEN PLOTTED AT A SCALE OF 1:500



ALL DISTANCES ARE HORIZONTAL GROUND-LEVEL AND ARE SHOWN IN METRES AND DECIMALS THEREOF, UNLESS OTHERWISE INDICATED.

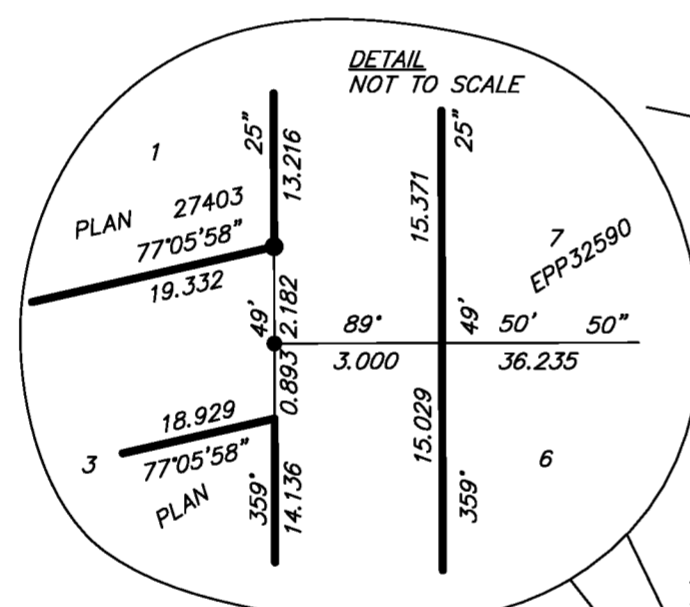
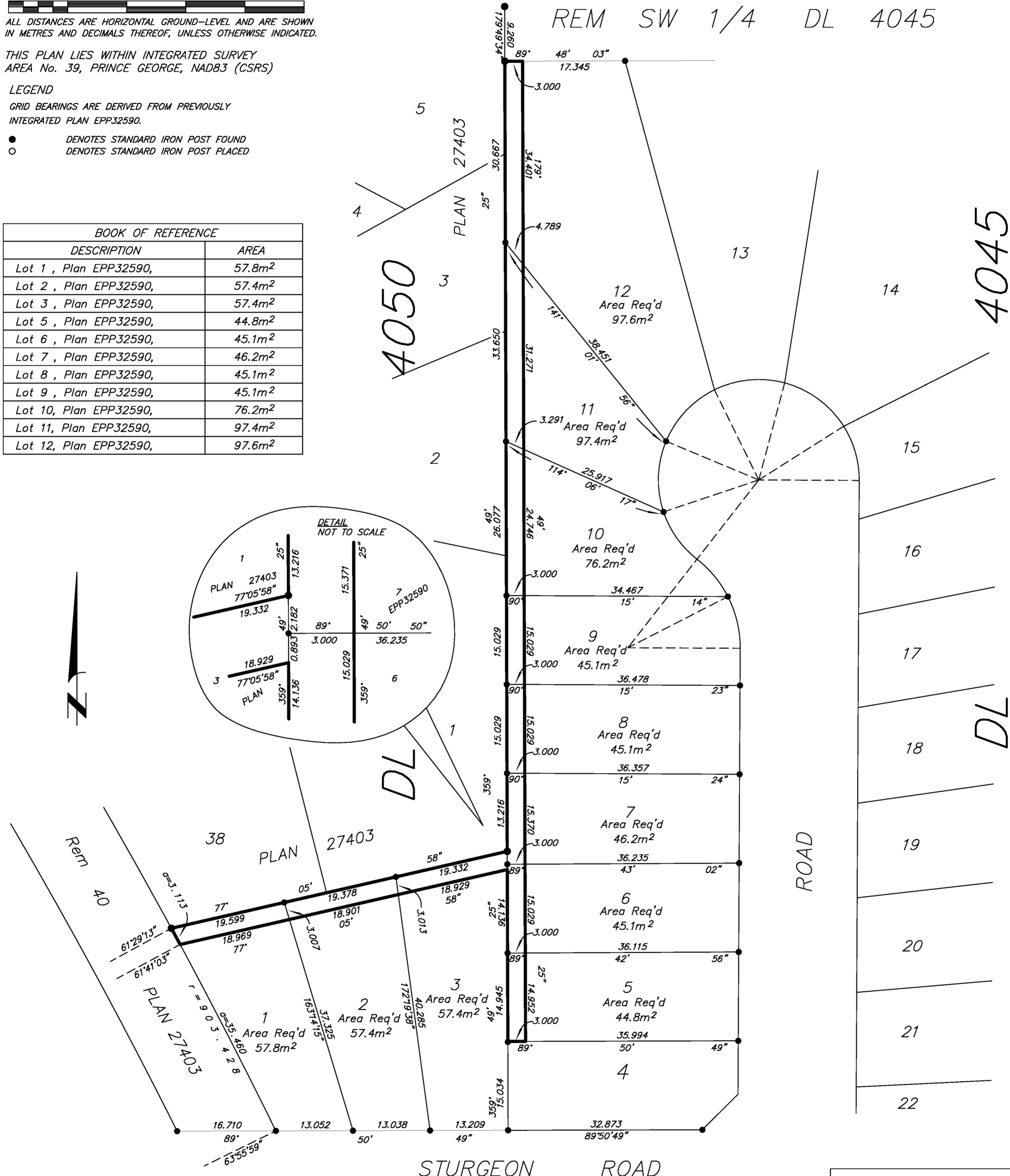
THIS PLAN LIES WITHIN INTEGRATED SURVEY AREA No. 39, PRINCE GEORGE, NAD83 (CSRS)

LEGEND

GRID BEARINGS ARE DERIVED FROM PREVIOUSLY INTEGRATED PLAN EPP32590.

- DENOTES STANDARD IRON POST FOUND
- DENOTES STANDARD IRON POST PLACED

BOOK OF REFERENCE	
DESCRIPTION	AREA
Lot 1, Plan EPP32590,	57.8m ²
Lot 2, Plan EPP32590,	57.4m ²
Lot 3, Plan EPP32590,	57.4m ²
Lot 5, Plan EPP32590,	44.8m ²
Lot 6, Plan EPP32590,	45.1m ²
Lot 7, Plan EPP32590,	46.2m ²
Lot 8, Plan EPP32590,	45.1m ²
Lot 9, Plan EPP32590,	45.1m ²
Lot 10, Plan EPP32590,	76.2m ²
Lot 11, Plan EPP32590,	97.4m ²
Lot 12, Plan EPP32590,	97.6m ²



McElhanney
 McElhanney Associates
 Land Surveying Ltd.
 Prince George, B.C.
 E-mail: pgmals@mcelhanney.com
 Ph: (250) 561-2229 Fax: (250) 563-1941

DL- 4045	File No. - 5991-E
----------	-------------------

THE FIELD SURVEY REPRESENTED BY THIS PLAN WAS COMPLETED ON THE 15th DAY OF JULY, 2013. DALE KEOWN, BCLS

THIS PLAN LIES WITHIN THE REGIONAL DISTRICT OF FRASER - FORT GEORGE.