

**SUBDIVISION PLAN OF LOTS 1 AND 2,  
DISTRICT LOT 4045, CARIBOO DISTRICT, PLAN 15885;  
LOT 39 AND PART OF LOT 40, DISTRICT LOT 4050,  
CARIBOO DISTRICT, PLAN 27403.**

BCGS 93G.096 AND 93G.097

THIS PLAN LIES WITHIN INTEGRATED SURVEY  
AREA No. 39, PRINCE GEORGE, NAD83 (CSRS)

THE INTENDED PLOT SIZE OF THIS PLAN IS 864mm IN WIDTH BY  
560mm IN HEIGHT (D SIZE) WHEN PLOTTED AT A SCALE OF 1:1000  
20m 0 20 40 60 80m

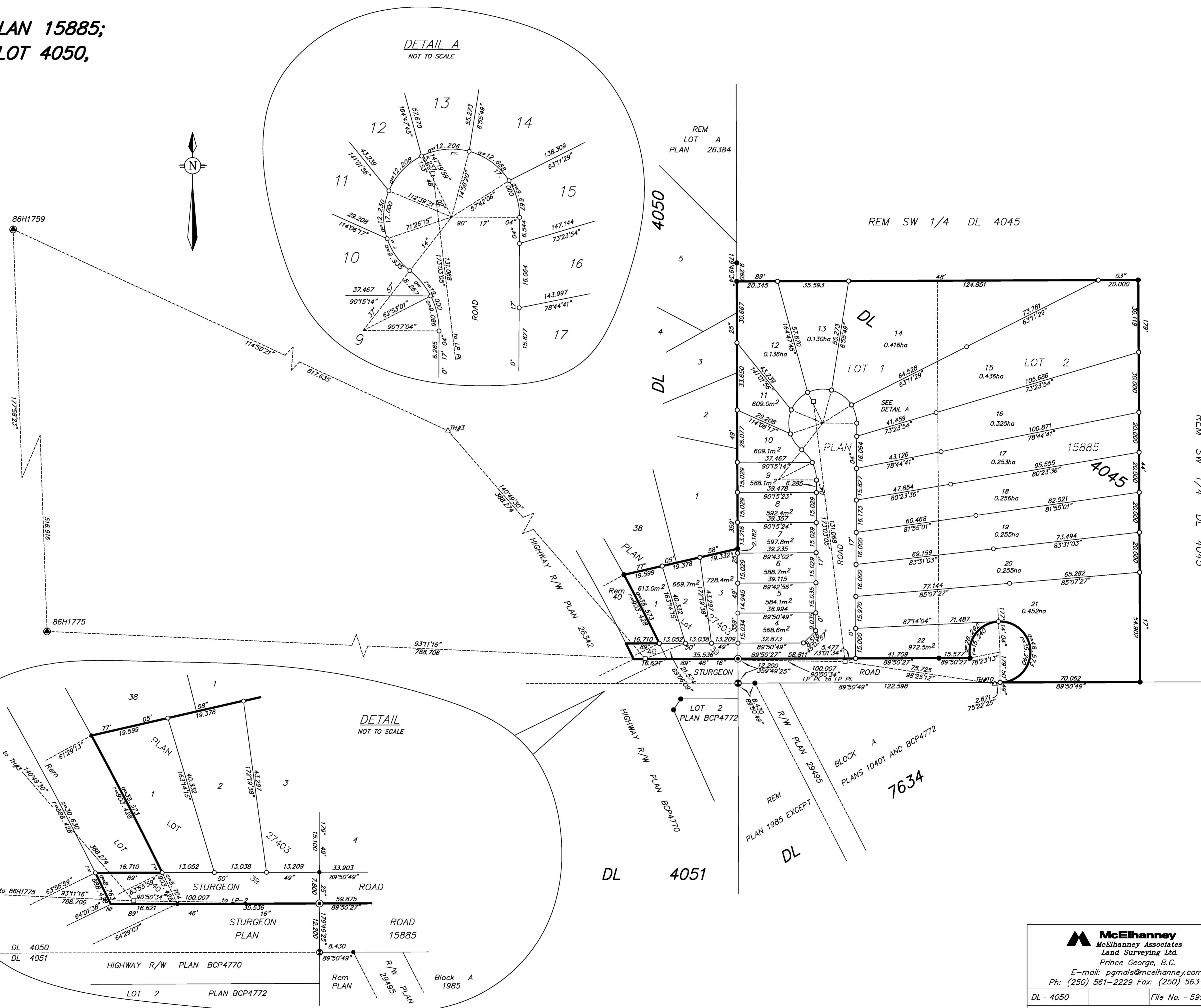
ALL DISTANCES ARE HORIZONTAL GROUND-LEVEL AND ARE SHOWN  
IN METRES AND DECIMALS THEREOF, UNLESS OTHERWISE INDICATED.

**LEGEND**

GRID BEARINGS ARE DERIVED FROM OBSERVATIONS  
BETWEEN CONTROL MONUMENTS 86H1759 AND 86H1775.

- DENOTES CONTROL MONUMENT FOUND
- DENOTES STANDARD IRON POST FOUND
- DENOTES STANDARD IRON POST PLACED
- △ Traverse Hub Placed
- Lead Plug Placed

THIS PLAN SHOWS HORIZONTAL GROUND-LEVEL DISTANCES UNLESS OTHERWISE  
SPECIFIED. TO COMPUTE GRID DISTANCES, MULTIPLY GROUND-LEVEL DISTANCES  
BY THE AVERAGE COMBINED FACTOR OF 0.9995090 WHICH HAS BEEN DERIVED  
FROM 86H1759 AND 86H1775.



A COVENANT IN THE NAME OF CITY OF PRINCE GEORGE PURSUANT TO  
SECTION 219 IS A CONDITION OF APPROVAL FOR SUBDIVISION.

THIS PLAN LIES WITHIN THE JURISDICTION OF THE  
APPROVING OFFICER FOR THE CITY OF PRINCE GEORGE.  
CPG File: SD100349

THE FIELD SURVEY REPRESENTED BY THIS PLAN  
WAS COMPLETED ON THE 15th DAY OF JULY, 2013.  
DALE KEOWN, BCLS 468

THIS PLAN LIES WITHIN THE REGIONAL DISTRICT OF FRASER - FORT GEORGE.

**McElhanney**  
McElhanney Associates  
Land Surveying Ltd.  
Prince George, B.C.  
E-mail: pgmols@mcElhanney.com  
Ph: (250) 561-2229 Fax: (250) 563-1941

DL- 4050	File No. - 5991-S
----------	-------------------