

**PLAN OF STATUTORY RIGHT OF WAY OVER PART OF LOT 1,
DISTRICT LOT 1433, CARIBOO DISTRICT,
PLAN EPP13191 EXCEPT PLAN EPP32539.**

PLAN EPP32543

PURSUANT TO SECTION 113 OF THE LAND TITLE ACT
BCGS 93G.087

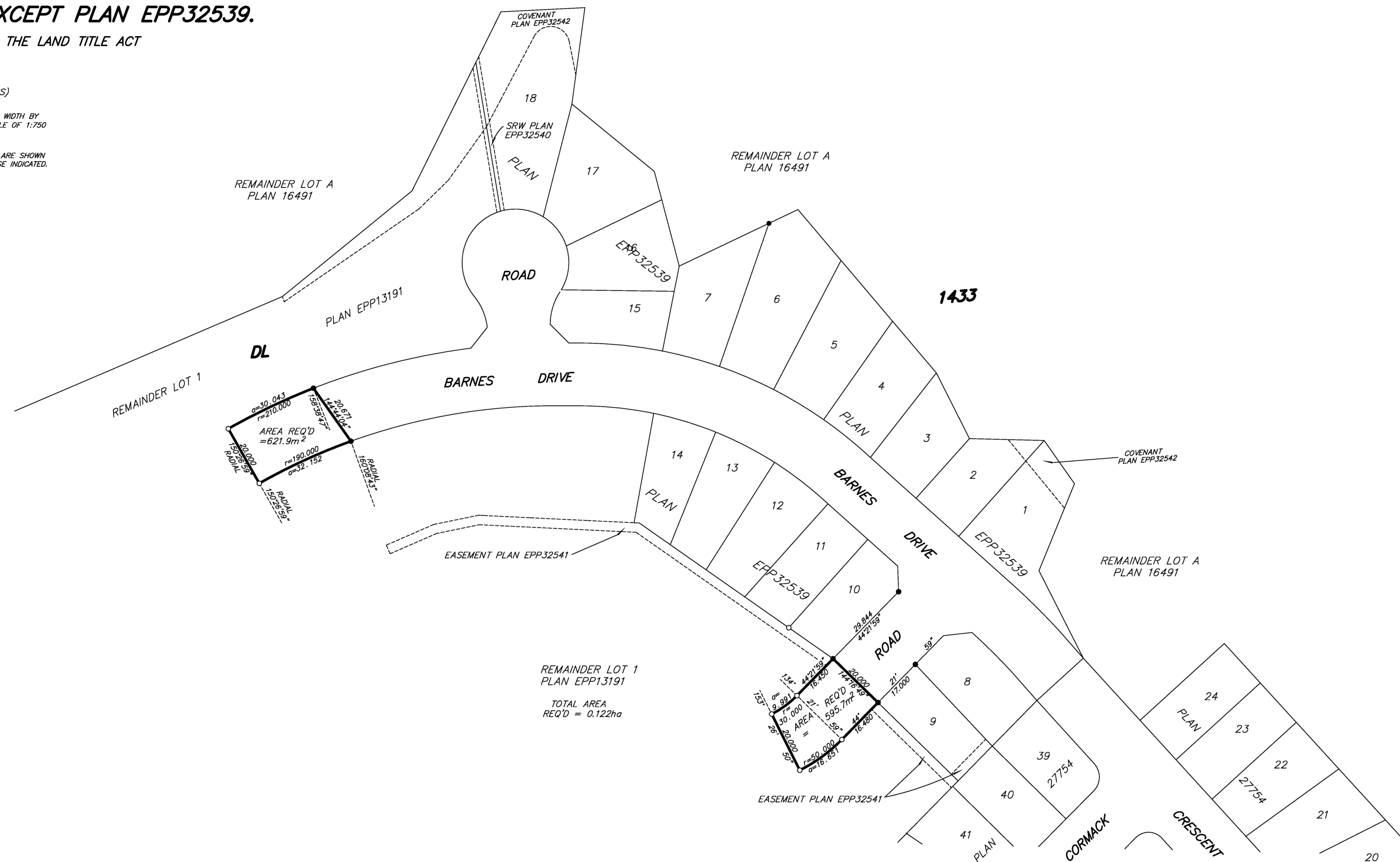
THIS PLAN LIES WITHIN INTEGRATED SURVEY
AREA No. 39, PRINCE GEORGE, NAD83 (CSRS)

THE INTENDED PLOT SIZE OF THIS PLAN IS 864mm IN WIDTH BY
560mm IN HEIGHT (0 SIZE) WHEN PLOTTED AT A SCALE OF 1:750
10m 0 10 20 30 50m

ALL DISTANCES ARE HORIZONTAL GROUND-LEVEL AND ARE SHOWN
IN METRES AND DECIMALS THEREOF, UNLESS OTHERWISE INDICATED.

GRID BEARINGS ARE DERIVED FROM PREVIOUSLY
INTEGRATED PLAN EPP32539

LEGEND
● Standard Iron Post Found
○ Standard Iron Post Placed



REMAINDER LOT 1
PLAN EPP13191
TOTAL AREA
REQ'D = 0.122ha

THE FIELD SURVEY REPRESENTED BY THIS PLAN
WAS COMPLETED ON THE 23rd DAY OF AUGUST, 2013.
DALE KEOWN, BCLS (46B)

THIS PLAN LIES WITHIN THE REGIONAL DISTRICT OF FRASER - FORT GEORGE.

McElhanney
McElhanney Associates
Land Surveying Ltd.
Prince George, B.C.
E-mail: pgmals@mcElhanney.com
Ph: (250) 561-2229 Fax: (250) 563-1941

DL- 1433	File No. - 6080-RW1
----------	---------------------