

REFERENCE PLAN TO ACCOMPANY COVENANT OVER PARTS OF LOTS 1, 2 AND 18, DISTRICT LOT 1433, CARIBOO DISTRICT, PLAN EPP32539 AND PART OF LOT 1, DISTRICT LOT 1433, CARIBOO DISTRICT, PLAN EPP13191, EXCEPT PLAN EPP32539.

PLAN EPP32542

PURSUANT TO SECTION 99(1)(e) OF THE LAND TITLE ACT
BCGS 93G.087

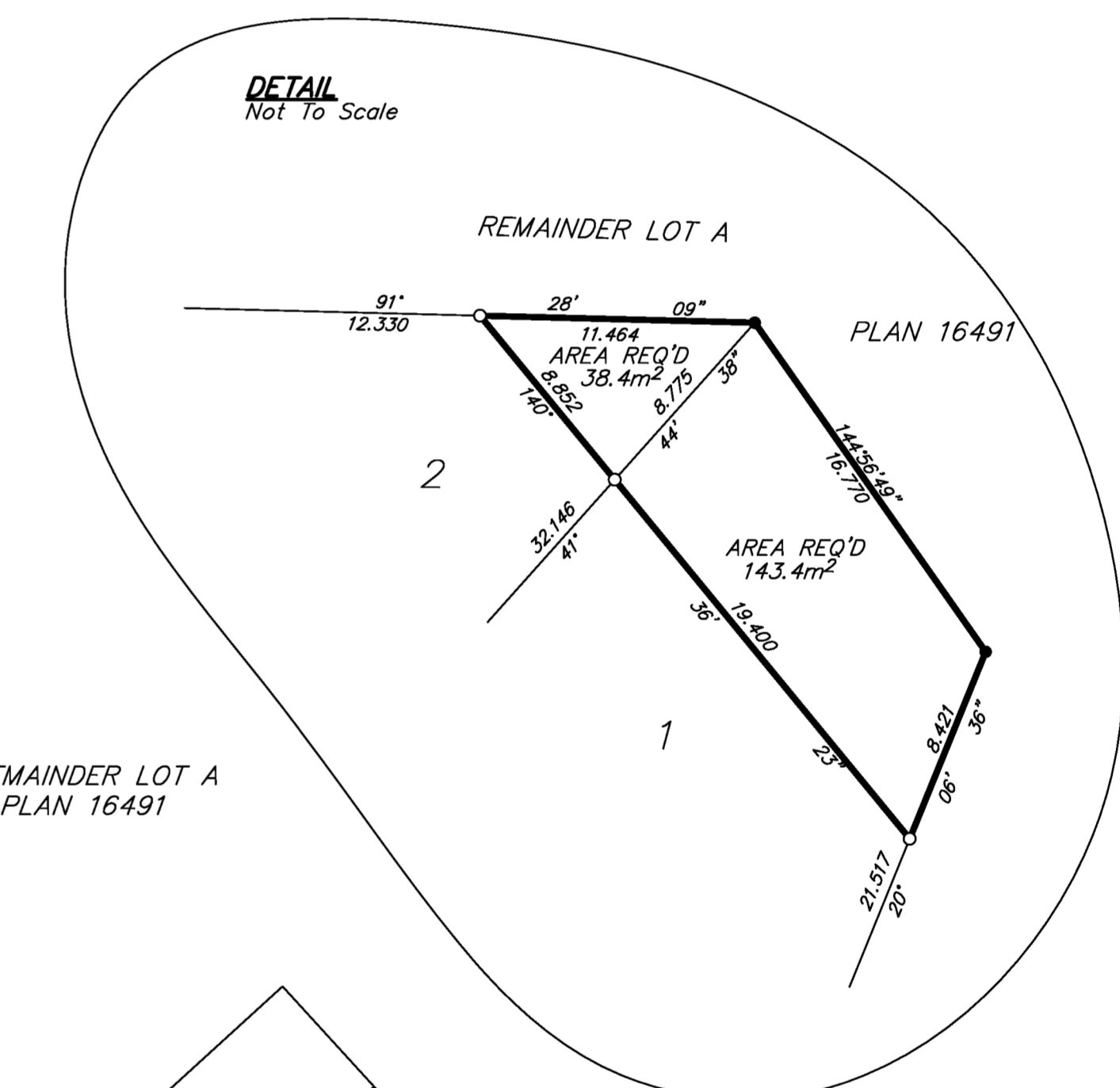
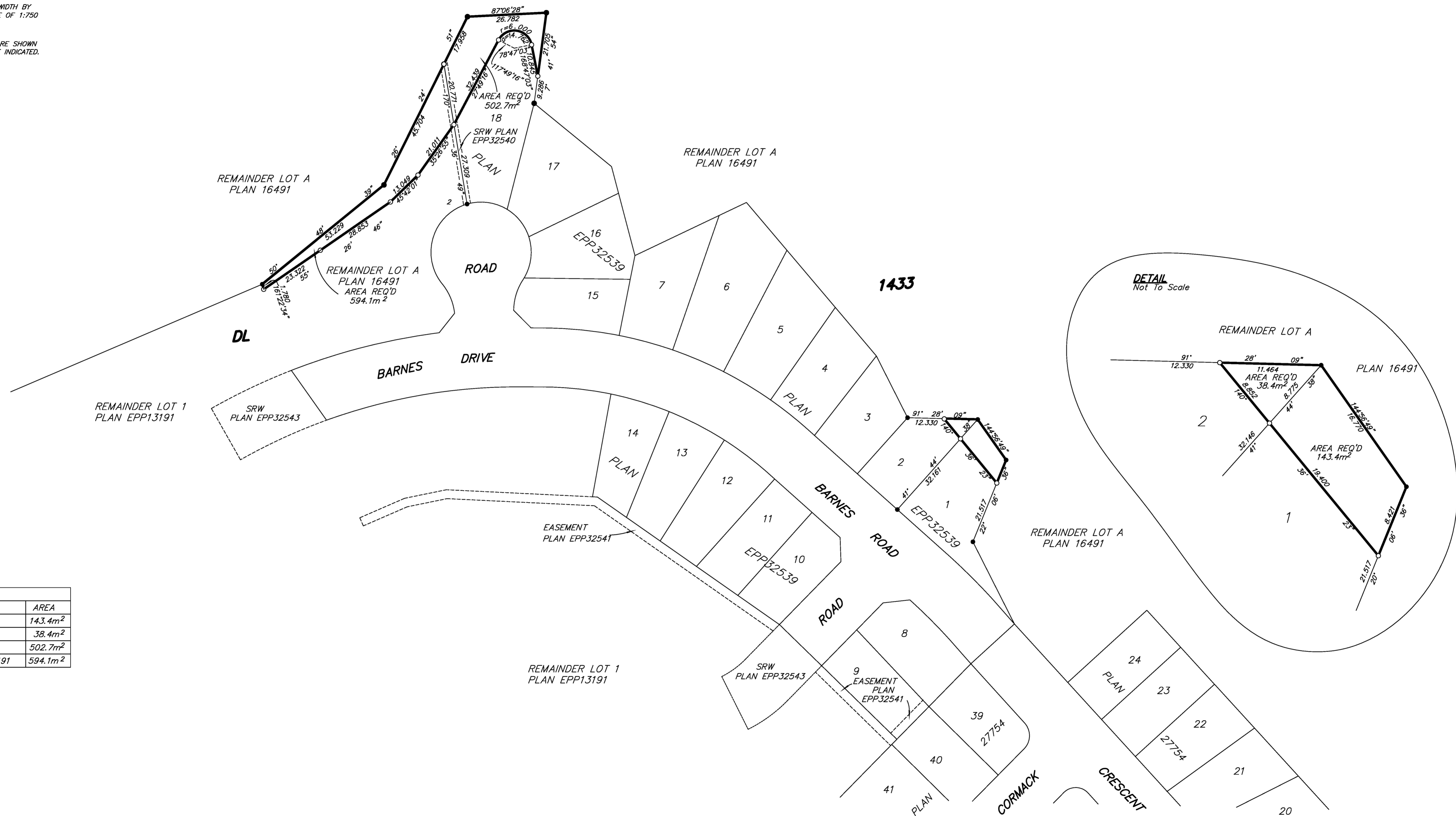
THIS PLAN LIES WITHIN INTEGRATED SURVEY
AREA No. 39, PRINCE GEORGE, NAD83 (CSRS)

THE INTENDED PLOT SIZE OF THIS PLAN IS 864mm IN WIDTH BY 560mm IN HEIGHT (O SIZE) WHEN PLOTTED AT A SCALE OF 1:750
10m 0 10 20 30 50m

ALL DISTANCES ARE HORIZONTAL GROUND-LEVEL AND ARE SHOWN IN METRES AND DECIMALS THEREOF, UNLESS OTHERWISE INDICATED.

GRID BEARINGS ARE DERIVED FROM PREVIOUSLY INTEGRATED PLAN EPP32539

LEGEND
● Standard Iron Post Found
○ Standard Iron Post Placed



BOOK OF REFERENCE	
DESCRIPTION	AREA
LOT 1, PLAN EPP32539	143.4m ²
LOT 2, PLAN EPP32539	38.4m ²
LOT 18, PLAN EPP32539	502.7m ²
LOT 1, PLAN EPP13191 EXCEPT PLAN EPP13191	594.1m ²

THE FIELD SURVEY REPRESENTED BY THIS PLAN WAS COMPLETED ON THE 23rd DAY OF AUGUST, 2013.
DALE KEOWN, BCLS (468)

THIS PLAN LIES WITHIN THE REGIONAL DISTRICT OF FRASER - FORT GEORGE.

McElhanney
McElhanney Associates
Land Surveying Ltd.
Prince George, B.C.
E-mail: pgmals@mcElhanney.com
Ph: (250) 561-2229 Fax: (250) 563-1941

DL- 1433	File No. - 6080-COV
----------	---------------------