

**REFERENCE PLAN OF EASEMENT OVER PART OF LOT 9,  
DISTRICT LOT 1433, CARIBOO DISTRICT, PLAN EPP32539  
AND PART OF LOT 1, DISTRICT LOT 1433, CARIBOO DISTRICT,  
PLAN EPP13191, EXCEPT PLAN EPP32539.**

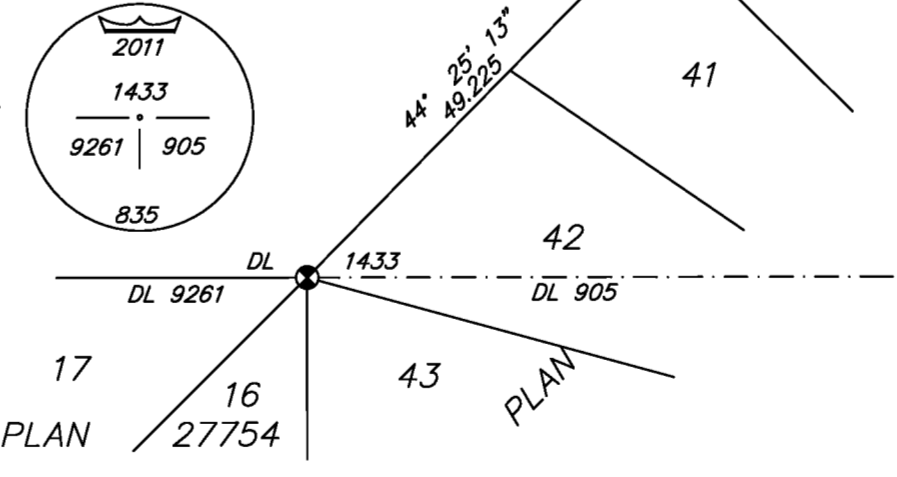
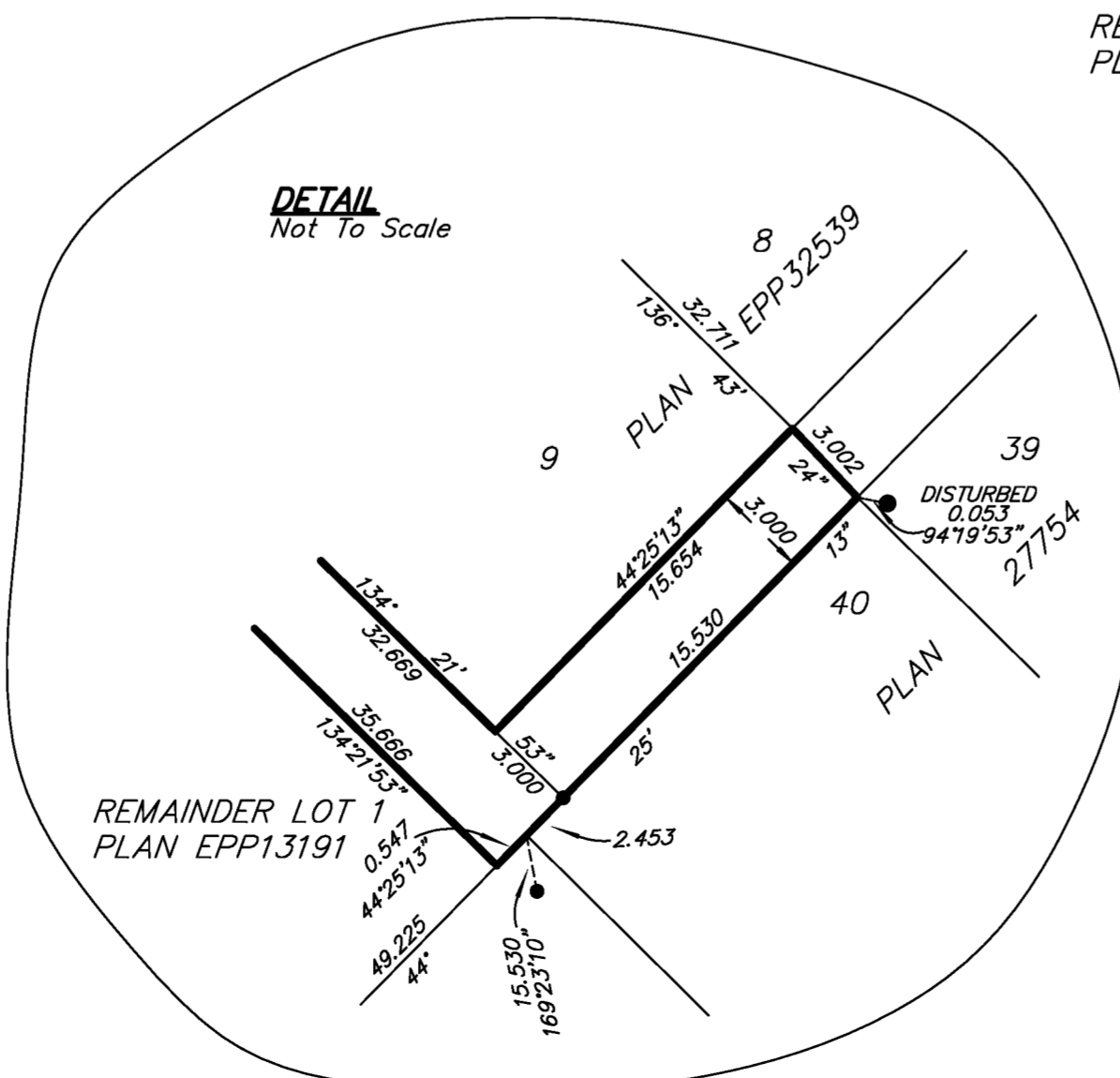
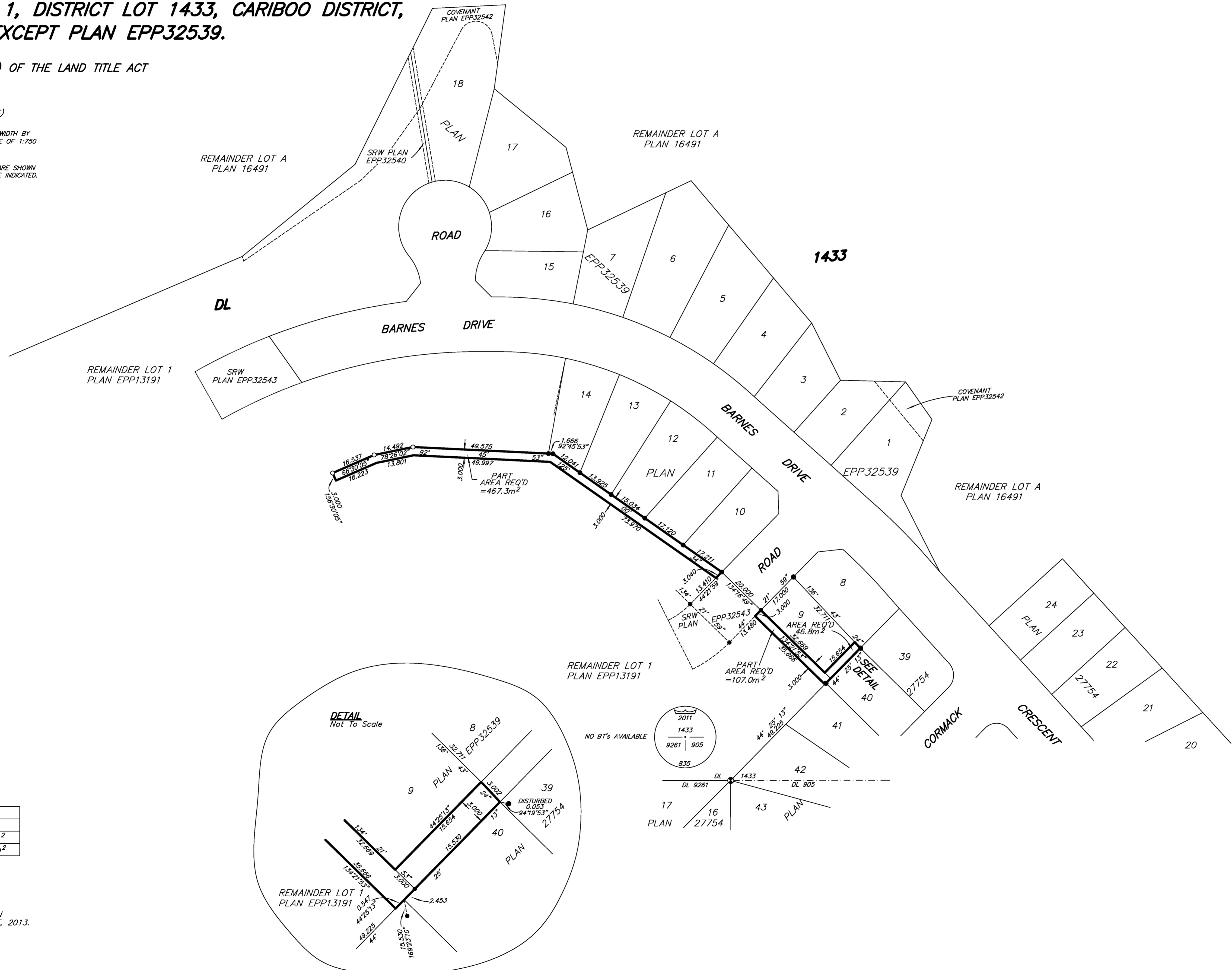
PURSUANT TO SECTION 99(1)(e) OF THE LAND TITLE ACT  
BCGS 93G.087

THIS PLAN LIES WITHIN INTEGRATED SURVEY  
AREA No. 39, PRINCE GEORGE, NAD83 (CSRS)

THE INTENDED PLOT SIZE OF THIS PLAN IS 864mm IN WIDTH BY  
560mm IN HEIGHT (D SIZE) WHEN PLOTTED AT A SCALE OF 1:750  
10m 0 10 20 30 50m  
ALL DISTANCES ARE HORIZONTAL GROUND-LEVEL AND ARE SHOWN  
IN METRES AND DECIMALS THEREOF, UNLESS OTHERWISE INDICATED.

GRID BEARINGS ARE DERIVED FROM PREVIOUSLY  
INTEGRATED PLAN EPP32539

**LEGEND**  
● Standard Iron Post Found  
○ Standard Iron Post Placed



BOOK OF REFERENCE	
DESCRIPTION	AREA
LOT 9, PLAN EPP32539	46.8m <sup>2</sup>
Rem LOT 1, PLAN EPP13191	574.3m <sup>2</sup>

THE FIELD SURVEY REPRESENTED BY THIS PLAN  
WAS COMPLETED ON THE 23rd DAY OF AUGUST, 2013.  
DALE KEOWN, BCLS (468)

THIS PLAN LIES WITHIN THE REGIONAL DISTRICT OF FRASER - FORT GEORGE.

**McElhanney**  
McElhanney Associates  
Land Surveying Ltd.  
Prince George, B.C.  
E-mail: pgmols@mcElhanney.com  
Ph: (250) 561-2229 Fax: (250) 563-1941

DL- 1433	File No. - 6080-E
----------	-------------------