

**REFERENCE PLAN OF ROAD DEDICATION
OVER PART OF PARCEL A (PLAN 18353),
DISTRICT LOT 343, CARIBOO DISTRICT,
PLAN 1268, EXCEPT PLANS 32230 AND
PART OF AMENDED LOT 10 (C5361),
BLOCK 183, DISTRICT LOT 343, CARIBOO
DISTRICT, PLAN 1268.**

PLAN EPP32449

PURSUANT TO SECTION 107 OF THE LAND TITLE ACT.
BCGS 93G.097

INTEGRATED SURVEY AREA No. 39, PRINCE GEORGE, NAD83 (CSRS)

THE INTENDED PLOT SIZE OF THIS PLAN IS 432mm IN WIDTH BY 560mm IN HEIGHT (C SIZE) WHEN PLOTTED AT A SCALE OF 1:1000



ALL DISTANCES ARE HORIZONTAL GROUND-LEVEL AND ARE SHOWN IN METRES AND DECIMALS THEREOF, UNLESS OTHERWISE INDICATED.

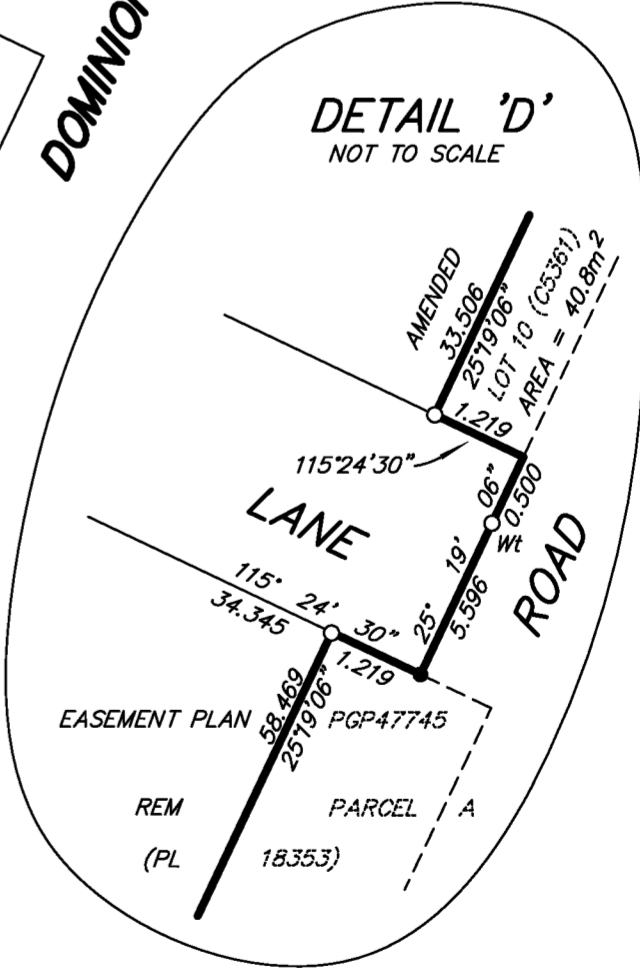
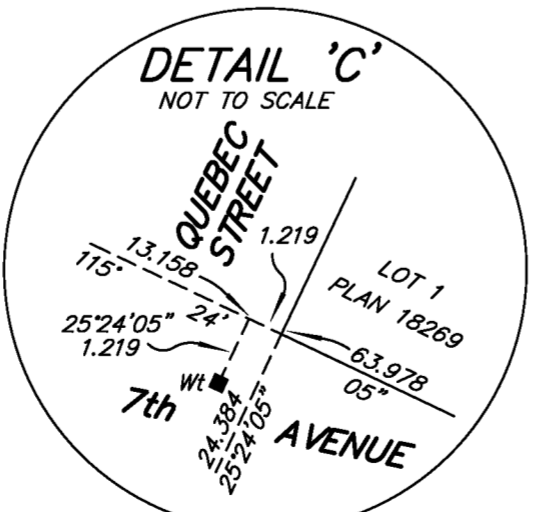
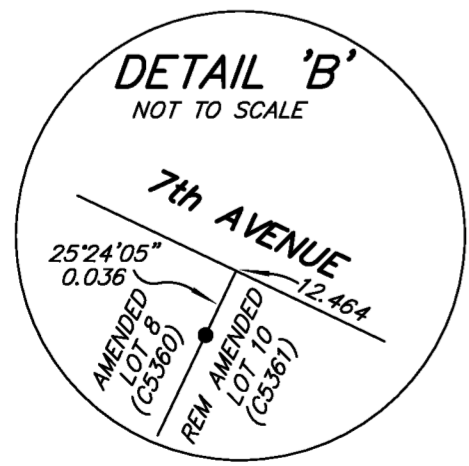
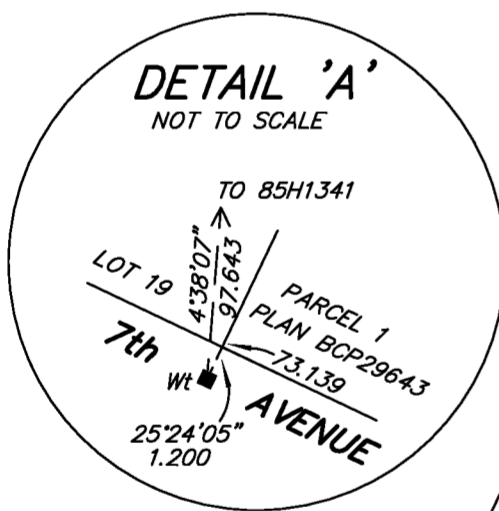
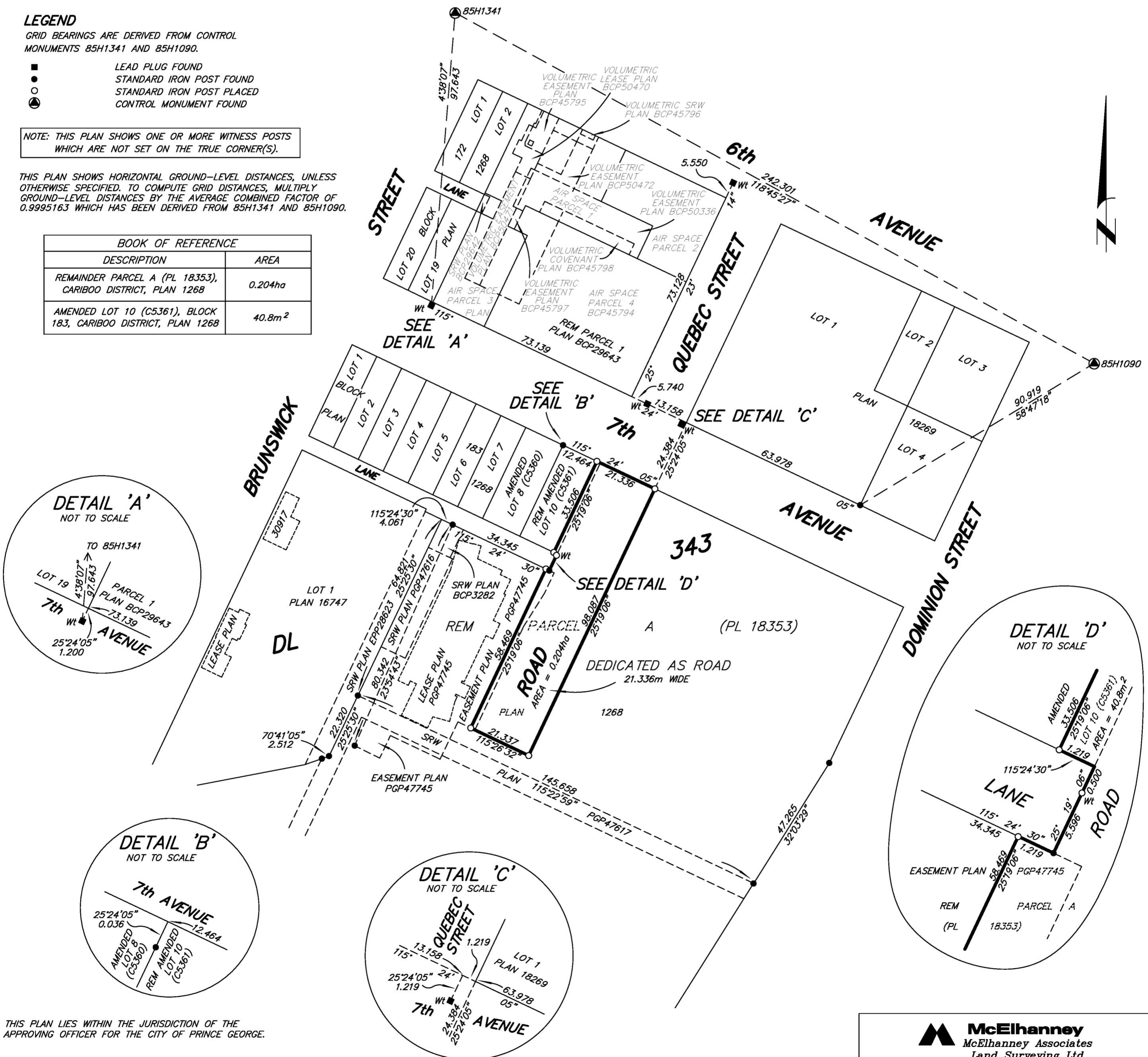
LEGEND

- GRID BEARINGS ARE DERIVED FROM CONTROL MONUMENTS 85H1341 AND 85H1090.
- LEAD PLUG FOUND
- STANDARD IRON POST FOUND
- STANDARD IRON POST PLACED
- ⊙ CONTROL MONUMENT FOUND

NOTE: THIS PLAN SHOWS ONE OR MORE WITNESS POSTS WHICH ARE NOT SET ON THE TRUE CORNER(S).

THIS PLAN SHOWS HORIZONTAL GROUND-LEVEL DISTANCES, UNLESS OTHERWISE SPECIFIED. TO COMPUTE GRID DISTANCES, MULTIPLY GROUND-LEVEL DISTANCES BY THE AVERAGE COMBINED FACTOR OF 0.9995163 WHICH HAS BEEN DERIVED FROM 85H1341 AND 85H1090.

BOOK OF REFERENCE	
DESCRIPTION	AREA
REMAINDER PARCEL A (PL 18353), CARIBOO DISTRICT, PLAN 1268	0.204ha
AMENDED LOT 10 (C5361), BLOCK 183, CARIBOO DISTRICT, PLAN 1268	40.8m ²



THIS PLAN LIES WITHIN THE JURISDICTION OF THE APPROVING OFFICER FOR THE CITY OF PRINCE GEORGE.

THE FIELD SURVEY REPRESENTED BY THIS PLAN WAS COMPLETED ON THE 27th DAY OF JUNE, 2013. DALE KEOWN, BCLS

THIS PLAN LIES WITHIN THE REGIONAL DISTRICT OF FRASER - FORT GEORGE.

McElhanney
McElhanney Associates
Land Surveying Ltd.
Prince George, B.C.
E-mail: pgmals@mcelhanney.com
Ph: (250) 561-2229 Fax: (250) 563-1941

DL- 343 File No. - 6114