

SUBDIVISION PLAN OF LOT 1, DISTRICT LOT 4030, CARIBOO DISTRICT, PLAN 34340; PART OF THE NORTH EAST 1/4 OF THE NORTH WEST 1/4 OF DISTRICT LOT 4030, CARIBOO DISTRICT, EXCEPT PLAN 23126 AND PART SHOWN ON THE PLAN FILED WITH DOCUMENT 0142; AND THAT PART OF THE NORTH EAST 1/4 OF THE NORTH WEST 1/4 OF DISTRICT LOT 4030, CARIBOO DISTRICT, SHOWN OUTLINED IN GREEN ON A SKETCH ATTACHED TO DOCUMENT P44463.

PLAN EPP32388

BCGS 93J.007

THE INTENDED PLOT SIZE OF THIS PLAN IS 560mm IN WIDTH BY 864mm IN HEIGHT (D SIZE) WHEN PLOTTED AT A SCALE OF 1:1500



ALL DISTANCES ARE HORIZONTAL GROUND-LEVEL AND ARE SHOWN IN METRES AND DECIMALS THEREOF, UNLESS OTHERWISE INDICATED.

LEGEND

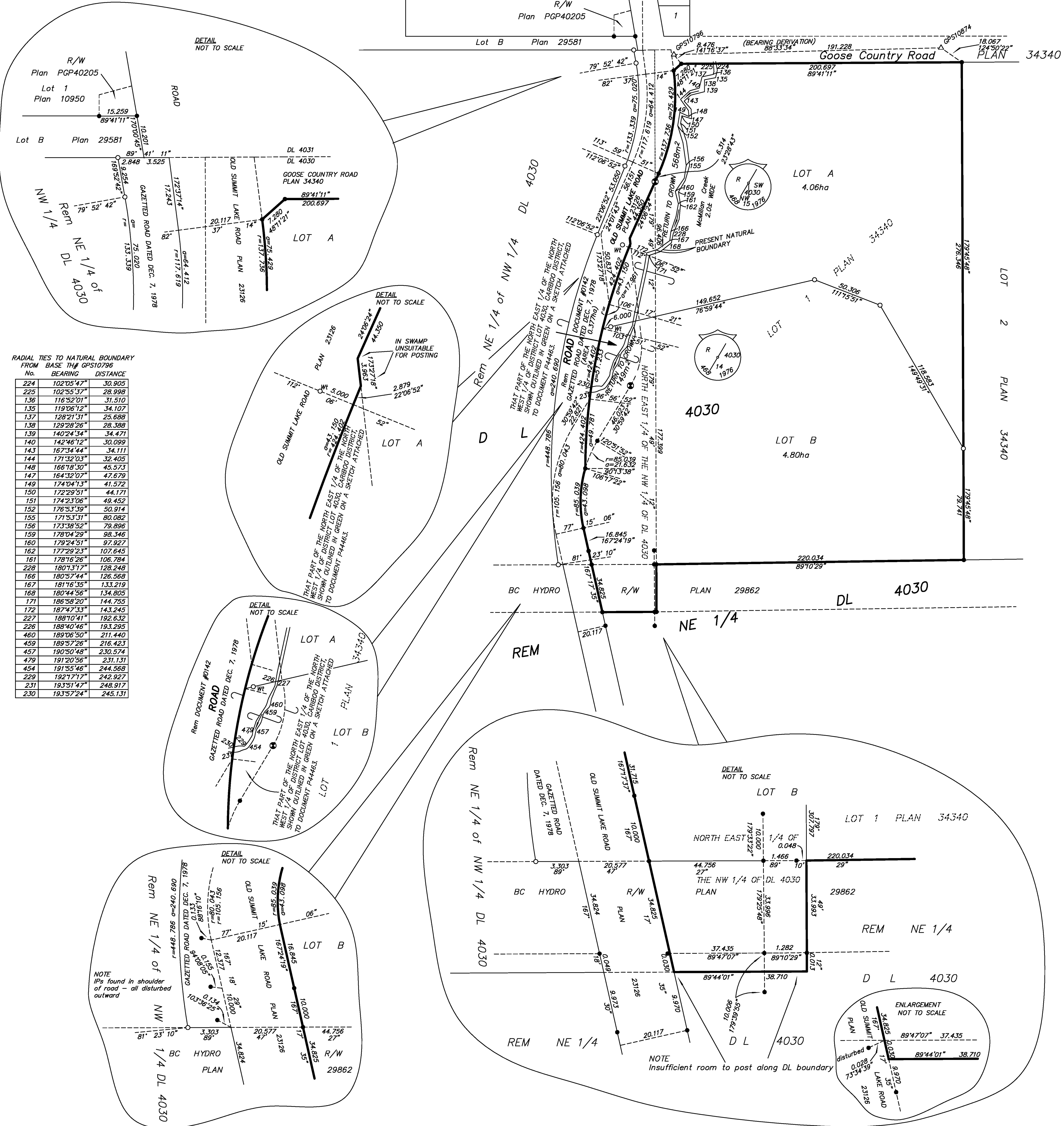
- STANDARD CAPPED POST FOUND
- STANDARD IRON POST FOUND
- STANDARD IRON POST PLACED
- △ TRAVERSE HUB PLACED

THIS PLAN SHOWS HORIZONTAL GROUND-LEVEL DISTANCES UNLESS OTHERWISE SPECIFIED, TO COMPUTE GRID DISTANCES, MULTIPLY GROUND-LEVEL DISTANCES BY THE AVERAGE COMBINED FACTOR OF 0.999499. THE AVERAGE COMBINED FACTOR HAS BEEN DETERMINED BASED ON AN ELLIPSOIDAL ELEVATION OF 664.9 METRES.

GRID BEARINGS ARE DERIVED FROM DIFFERENTIAL CARRIER PHASE GPS OBSERVATIONS AND ARE REFERRED TO THE CENTRAL MERIDIAN OF UTM ZONE 10. TO OBTAIN LOCAL ASTRONOMIC BEARINGS REFERRED TO THE MERIDIAN THROUGH THE GPS10874, ADD 0°12'38".

THE UTM COORDINATES AND ESTIMATED HORIZONTAL POSITIONAL ACCURACY ACHIEVED ARE DERIVED FROM DUAL FREQUENCY OBSERVATIONS PROCESSED USING NATURAL RESOURCES CANADA'S PRECISE POINT POSITIONING SERVICE.

NOTE: THIS PLAN SHOWS ONE OR MORE WITNESS POSTS WHICH ARE NOT SET ON THE TRUE CORNER(S).



RADIAL TIES TO NATURAL BOUNDARY FROM BASE THE GPS10796

No.	BEARING	DISTANCE
224	102°05'47"	30.905
225	102°53'17"	28.898
136	116°52'01"	31.510
135	119°06'12"	34.107
137	128°21'31"	25.688
138	129°28'26"	28.398
139	140°24'34"	34.471
140	142°46'12"	30.099
143	167°34'44"	34.111
144	171°52'03"	32.405
148	166°18'30"	45.573
147	164°32'07"	47.679
149	174°04'13"	41.572
150	172°29'51"	44.171
151	174°23'06"	49.452
152	176°53'39"	50.914
155	171°53'31"	60.082
156	173°38'52"	79.896
159	178°04'29"	88.346
160	179°24'51"	97.927
162	177°29'23"	107.645
161	178°16'26"	106.784
228	180°13'17"	128.248
166	180°57'44"	126.568
167	181°16'35"	133.219
168	180°44'56"	134.805
171	186°58'20"	144.755
172	187°47'33"	143.245
227	188°10'41"	192.632
226	188°40'46"	193.295
460	189°06'50"	211.440
459	189°57'26"	216.423
457	190°50'48"	230.574
479	191°20'58"	231.131
454	191°55'46"	244.568
229	192°17'17"	242.927
231	193°51'47"	248.917
230	193°57'24"	245.131

THIS PLAN LIES WITHIN THE JURISDICTION OF THE APPROVING OFFICER FOR THE CITY OF PRINCE GEORGE. CPG File: SD100385

THE FIELD SURVEY REPRESENTED BY THIS PLAN WAS COMPLETED ON THE 17th DAY OF JUNE, 2013. DALE KEOWN, BCLS

THIS PLAN LIES WITHIN THE REGIONAL DISTRICT OF FRASER - FORT GEORGE.

McElhanney
 McElhanney Associates
 Land Surveying Ltd.
 Prince George, B.C.
 E-mail: pgmats@mcclhanney.com
 Ph: (250) 561-2229 Fax: (250) 563-1941

DL- 4030	File No. - 5904-S
CPG File No. SD100385	Rev 2