

# EXPLANATORY PLAN TO ACCOMPANY A COVENANT OVER A PORTION OF LOT B, DISTRICT LOT 8180, CARIBOO DISTRICT, PLAN BCP25328.

## PLAN EPP31926

PURSUANT TO SECTION 99(1)(e) OF THE LAND TITLE ACT.

BCGS 93G.087

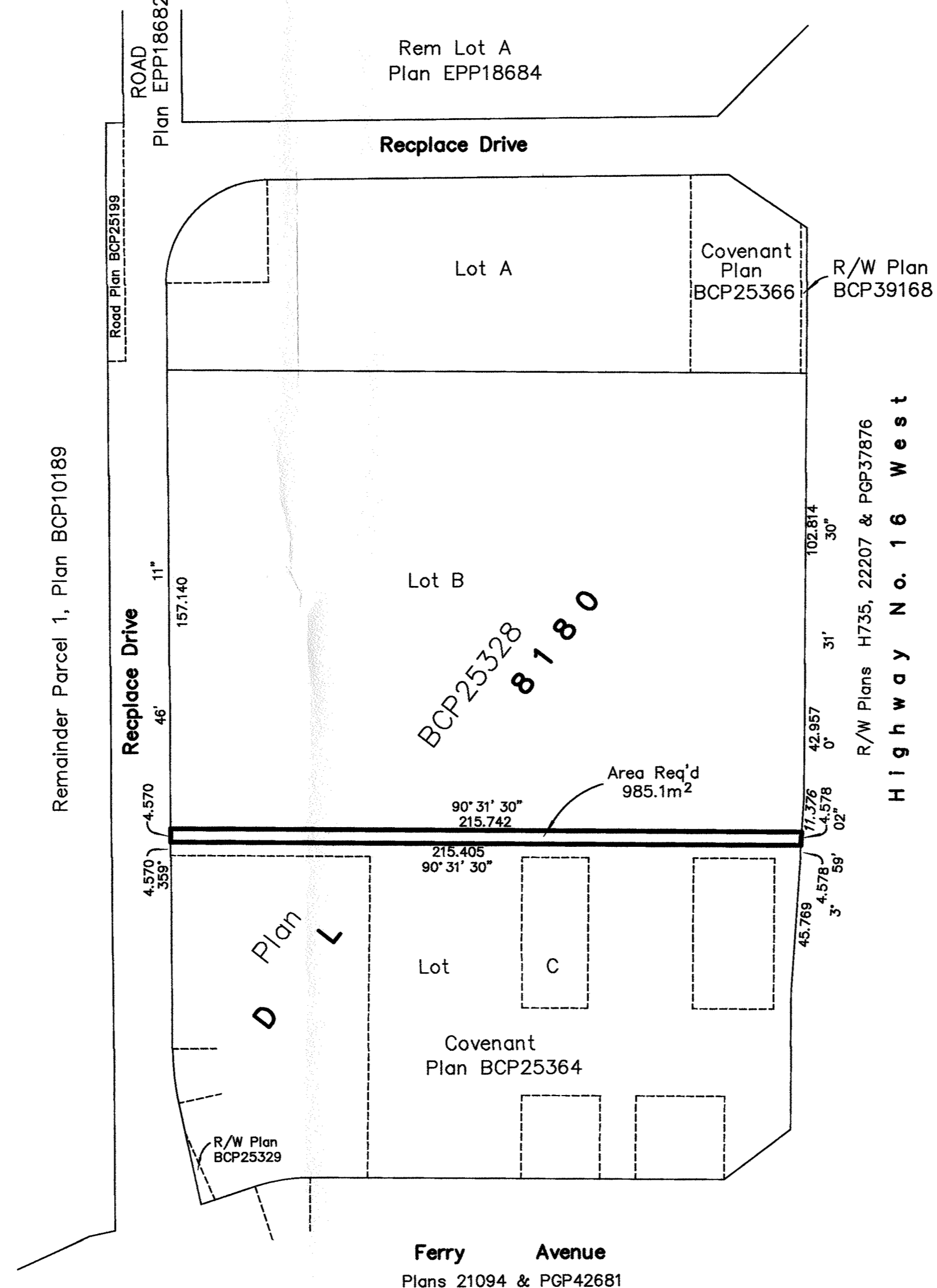
INTEGRATED SURVEY AREA No. 39, PRINCE GEORGE, NAD83 (CSRS)

THE INTENDED PLOT SIZE OF THIS PLAN IS 560mm IN WIDTH BY 432mm IN HEIGHT (C SIZE) WHEN PLOTTED AT A SCALE OF 1:1500

20m 0 20 40 60 100m

ALL DISTANCES ARE HORIZONTAL GROUND-LEVEL AND ARE SHOWN IN METRES AND DECIMALS THEREOF, UNLESS OTHERWISE INDICATED.

GRID BEARINGS ARE DERIVED FROM PREVIOUSLY INTEGRATED PLAN BCP25328



THIS PLAN IS BASED ON THE FOLLOWING LAND TITLE AND SURVEY AUTHORITY OF BC RECORDS: BCP25328. DALE KEOWN, BCLS 12th DAY OF JUNE, 2013

THIS PLAN LIES WITHIN THE REGIONAL DISTRICT OF FRASER - FORT GEORGE.

**McElhanney**  
McElhanney Associates  
Land Surveying Ltd.  
Prince George, B.C.

E-mail: pgm@mcElhanney.com  
Ph: (250) 561-2229 Fax: (250) 563-1941

DL- 8180

File No. - 6013-73