

# PLAN EPP31901

## EXPLANATORY PLAN OF EASEMENT TO ACCOMPANY AN ENCROACHMENT AGREEMENT ON LOT F, DISTRICT LOT 1427, CARIBOO DISTRICT, PLAN 19429.

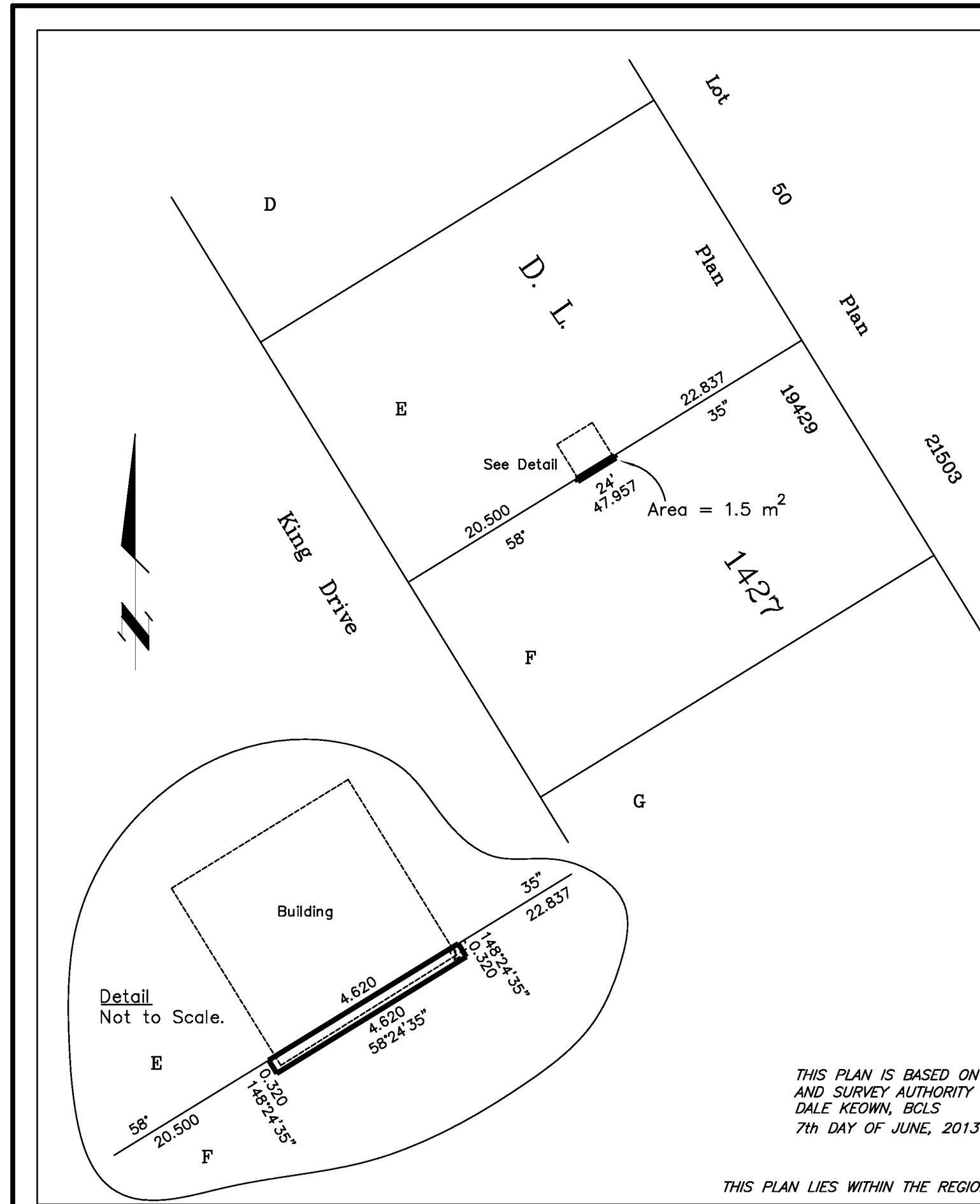
PURSUANT TO SECTION 99(1)(e) OF THE LAND TITLE ACT.  
BCGS 93G.097

INTEGRATED SURVEY AREA No. 39, PRINCE GEORGE, NAD83 (CSRS)

THE INTENDED PLOT SIZE OF THIS PLAN IS 432mm IN WIDTH BY  
280mm IN HEIGHT (B SIZE) WHEN PLOTTED AT A SCALE OF 1:500



ALL DISTANCES ARE HORIZONTAL GROUND-LEVEL AND ARE SHOWN  
IN METRES AND DECIMALS THEREOF, UNLESS OTHERWISE INDICATED.



THIS PLAN IS BASED ON THE FOLLOWING LAND TITLE  
AND SURVEY AUTHORITY OF BC RECORDS: PLAN 16573  
DALE KEOWN, BCLS  
7th DAY OF JUNE, 2013

THIS PLAN LIES WITHIN THE REGIONAL DISTRICT OF FRASER - FORT GEORGE.

**McElhanney**  
McElhanney Associates  
Land Surveying Ltd.

Prince George, B.C.

Ph: (250) 561-2229 Fax: 563-1941

F.B.- HH-20

D.L.- 1427

File No. - 6013-70