

# REFERENCE PLAN OF STATUTORY RIGHT OF WAY OVER PART OF LOT 4, DL 2003, CARIBOO DISTRICT, PLAN BCP22263

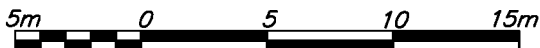
## PLAN EPP31609

PURSUANT TO SECTION 113 OF THE LAND TITLE ACT.

**BCGS 93G.087**

INTEGRATED SURVEY AREA No. 39, PRINCE GEORGE, NAD83 (CSRS)

THE INTENDED PLOT SIZE OF THIS PLAN IS 280mm IN WIDTH BY 432mm IN HEIGHT (B SIZE) WHEN PLOTTED AT A SCALE OF 1:300



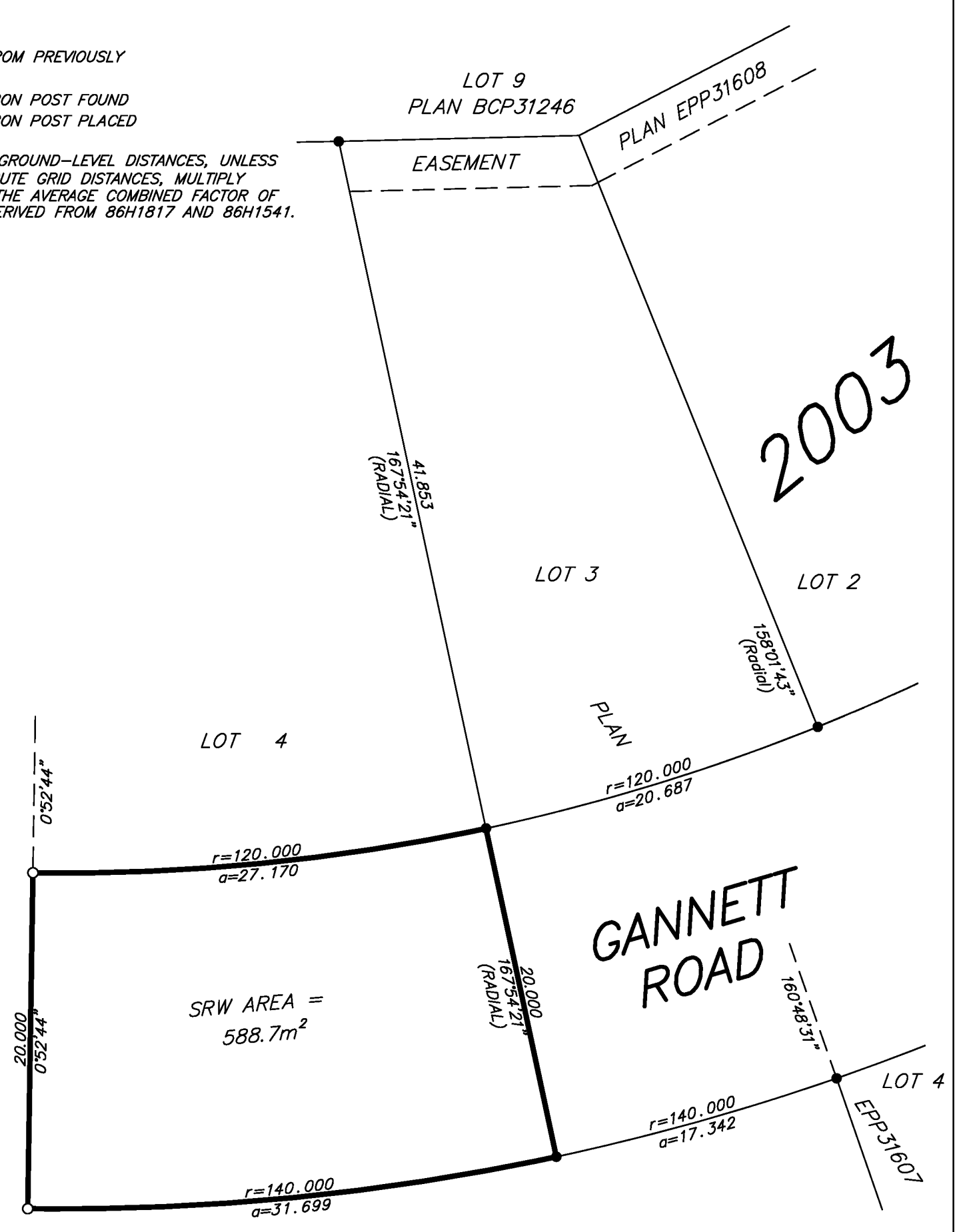
ALL DISTANCES ARE HORIZONTAL GROUND-LEVEL AND ARE SHOWN IN METRES AND DECIMALS THEREOF, UNLESS OTHERWISE INDICATED.

**LEGEND**

GRID BEARINGS ARE DERIVED FROM PREVIOUSLY INTEGRATED PLAN EPP31607.

- STANDARD IRON POST FOUND
- STANDARD IRON POST PLACED

THIS PLAN SHOWS HORIZONTAL GROUND-LEVEL DISTANCES, UNLESS OTHERWISE SPECIFIED. TO COMPUTE GRID DISTANCES, MULTIPLY GROUND-LEVEL DISTANCES BY THE AVERAGE COMBINED FACTOR OF 0.9995022 WHICH HAS BEEN DERIVED FROM 86H1817 AND 86H1541.



PLAN BCP22263

THE FIELD SURVEY REPRESENTED BY THIS PLAN WAS COMPLETED ON THE 28th DAY OF MAY, 2013.

DALE KEOWN, BCLS

THIS PLAN LIES WITHIN THE REGIONAL DISTRICT OF FRASER - FORT GEORGE.



**McElhanney**  
McElhanney Associates  
Land Surveying Ltd.  
Prince George, B.C.

E-mail: [pgmals@mcelhanney.com](mailto:pgmals@mcelhanney.com)  
Ph: (250) 561-2229 Fax: (250) 563-1941

DL- 2003

File No. - 6095-RW