

REFERENCE PLAN OF EASEMENT OVER PARTS OF LOTS 1 THROUGH 7 INCLUSIVE, DISTRICT LOT 2003, CARIBOO DISTRICT, PLAN EPP31607

PLAN EPP31608

PURSUANT TO SECTION 99(1)(e) OF THE LAND TITLE ACT.

BCGS 93G.087

INTEGRATED SURVEY AREA No. 39, PRINCE GEORGE, NAD83 (CSRS)

THE INTENDED PLOT SIZE OF THIS PLAN IS 432mm IN WIDTH BY 560mm IN HEIGHT (C SIZE) WHEN PLOTTED AT A SCALE OF 1:500



ALL DISTANCES ARE HORIZONTAL GROUND-LEVEL AND ARE SHOWN IN METRES AND DECIMALS THEREOF, UNLESS OTHERWISE INDICATED.

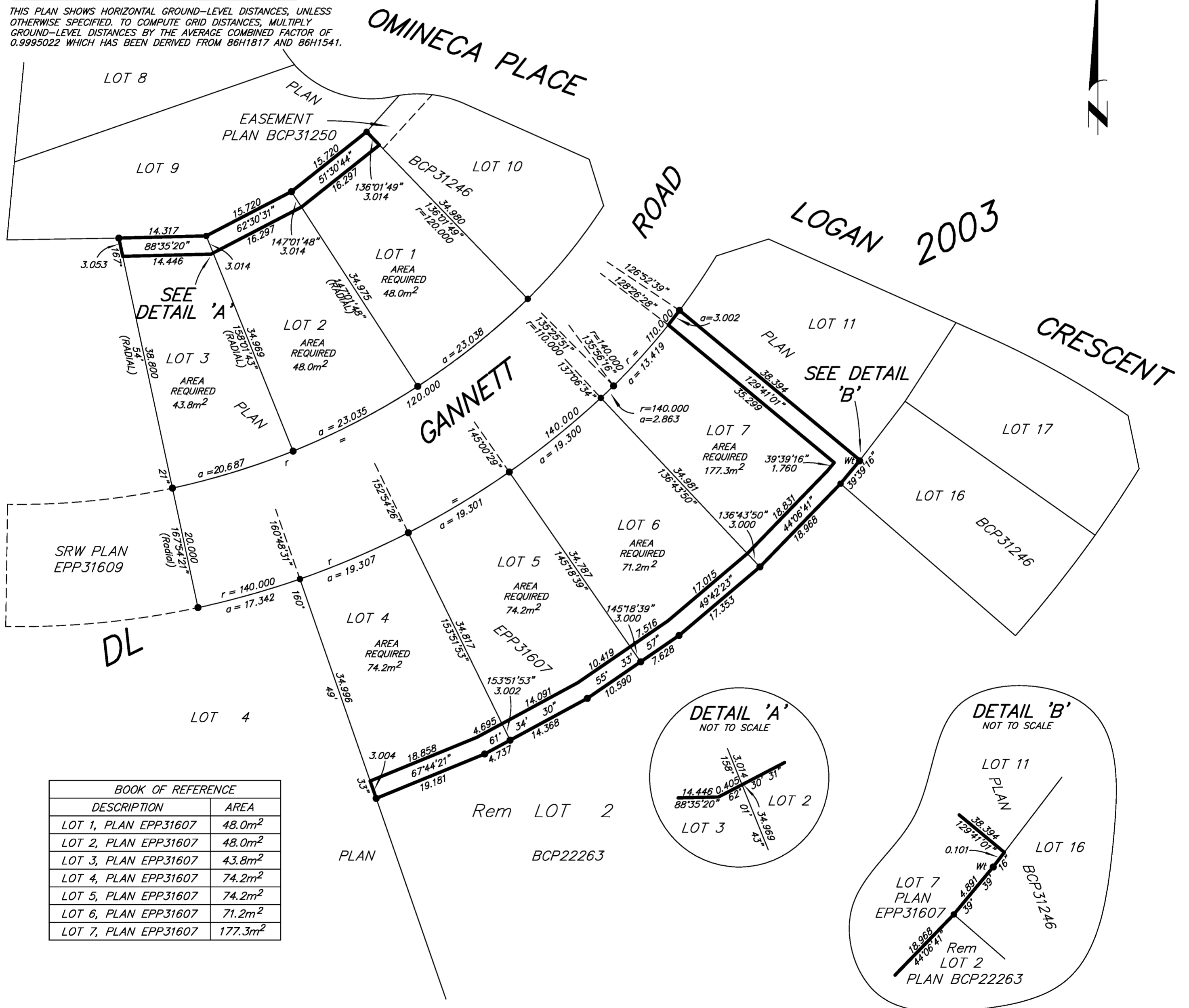
LEGEND

GRID BEARINGS ARE DERIVED FROM PREVIOUSLY INTEGRATED PLAN EPP31607.

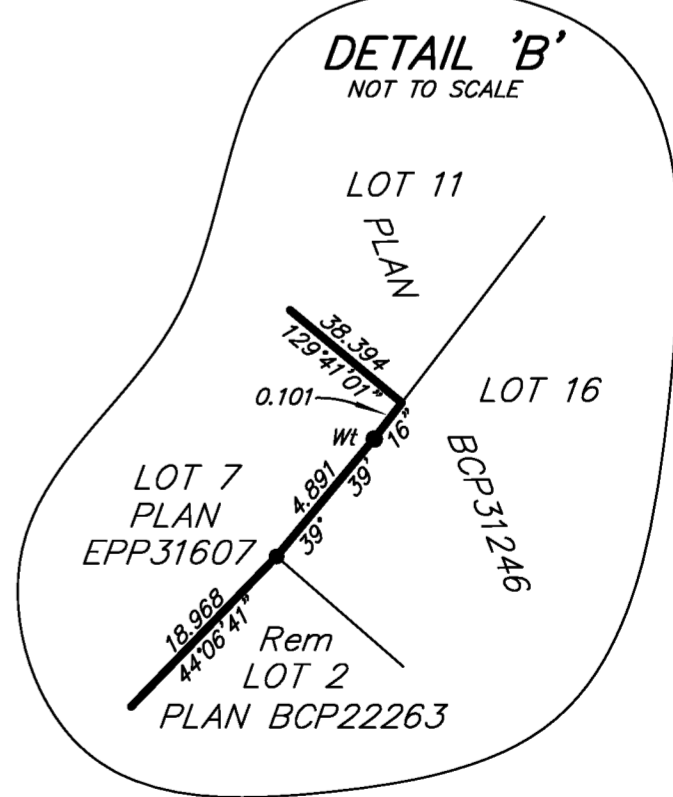
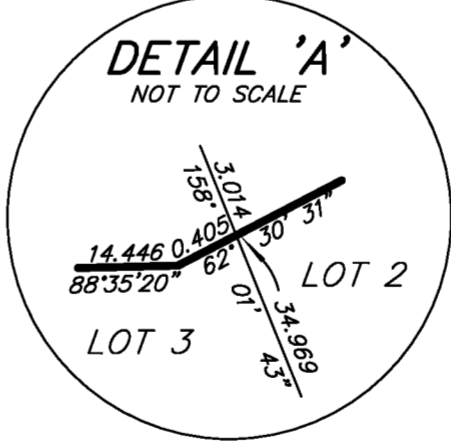
- STANDARD IRON POST FOUND

NOTE: THIS PLAN SHOWS ONE OR MORE WITNESS POSTS WHICH ARE NOT SET ON THE TRUE CORNER(S).

THIS PLAN SHOWS HORIZONTAL GROUND-LEVEL DISTANCES, UNLESS OTHERWISE SPECIFIED. TO COMPUTE GRID DISTANCES, MULTIPLY GROUND-LEVEL DISTANCES BY THE AVERAGE COMBINED FACTOR OF 0.9995022 WHICH HAS BEEN DERIVED FROM 86H1817 AND 86H1541.



BOOK OF REFERENCE	
DESCRIPTION	AREA
LOT 1, PLAN EPP31607	48.0m ²
LOT 2, PLAN EPP31607	48.0m ²
LOT 3, PLAN EPP31607	43.8m ²
LOT 4, PLAN EPP31607	74.2m ²
LOT 5, PLAN EPP31607	74.2m ²
LOT 6, PLAN EPP31607	71.2m ²
LOT 7, PLAN EPP31607	177.3m ²



THIS PLAN LIES WITHIN THE JURISDICTION OF THE APPROVING OFFICER FOR THE CITY OF PRINCE GEORGE. CPG File: SD100390

THE FIELD SURVEY REPRESENTED BY THIS PLAN WAS COMPLETED ON THE 28th DAY OF MAY, 2013. DALE KEOWN, BCLS

THIS PLAN LIES WITHIN THE REGIONAL DISTRICT OF FRASER - FORT GEORGE.

McElhanney
McElhanney Associates
Land Surveying Ltd.
Prince George, B.C.
E-mail: pgmals@mcElhanney.com
Ph: (250) 561-2229 Fax: (250) 563-1941

DL-2003	File No. - 6095
CPG File No. SD100390	