

PLAN OF SUBDIVISION OF PART OF LOT 2, DISTRICT LOT 2003, CARIBOO DISTRICT, PLAN BCP22263

PLAN EPP31607

PURSUANT TO SECTION 67 OF THE LAND TITLE ACT.
BCGS 93G.087

INTEGRATED SURVEY AREA No. 39, PRINCE GEORGE, NAD83 (CSRS)
THE INTENDED PLOT SIZE OF THIS PLAN IS 432mm IN WIDTH BY
560mm IN HEIGHT (C SIZE) WHEN PLOTTED AT A SCALE OF 1:500



ALL DISTANCES ARE HORIZONTAL GROUND-LEVEL AND ARE SHOWN
IN METRES AND DECIMALS THEREOF, UNLESS OTHERWISE INDICATED.

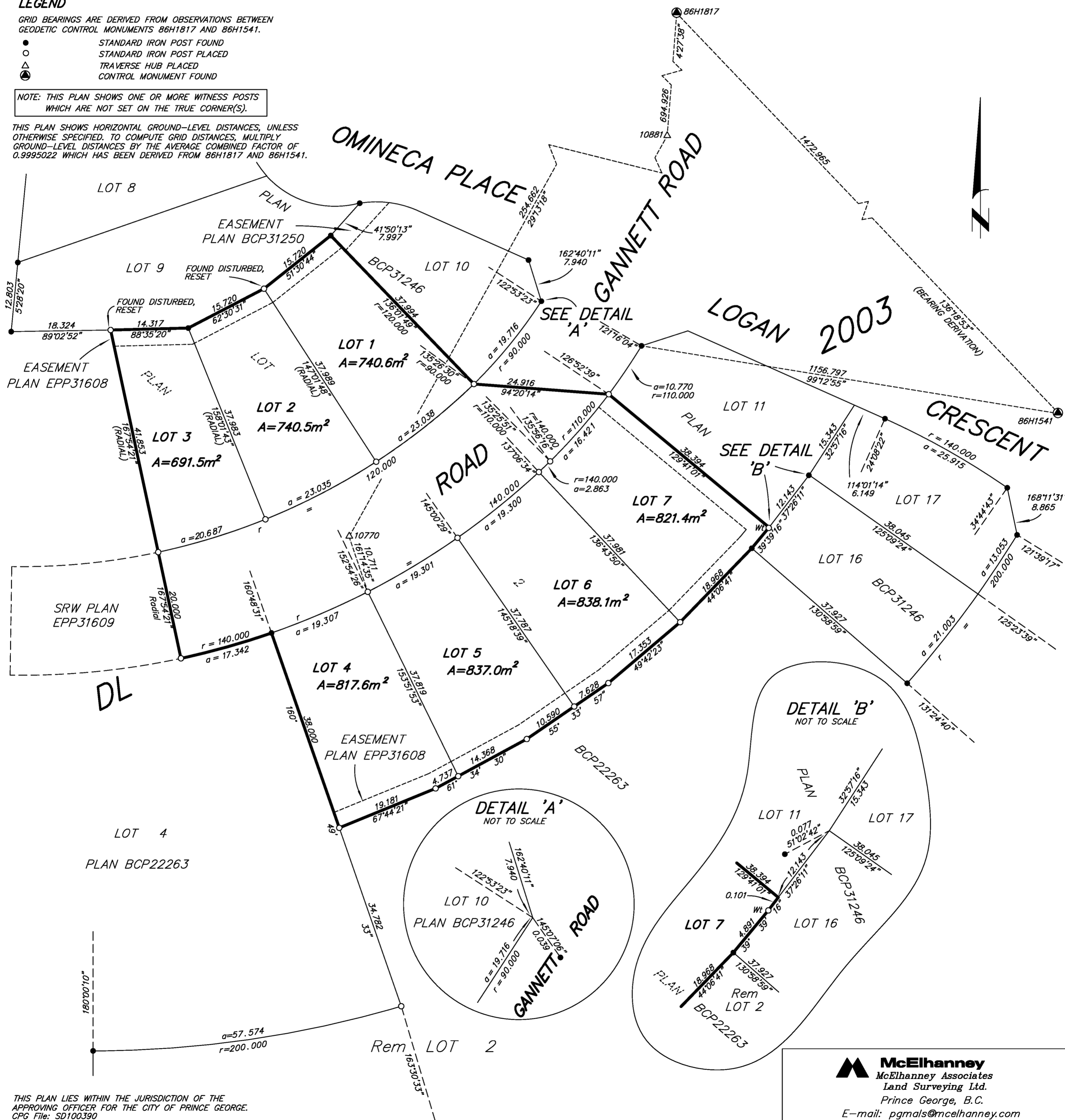
LEGEND

GRID BEARINGS ARE DERIVED FROM OBSERVATIONS BETWEEN
GEODETIC CONTROL MONUMENTS 86H1817 AND 86H1541.

- STANDARD IRON POST FOUND
- STANDARD IRON POST PLACED
- △ TRAVERSE HUB PLACED
- ⊙ CONTROL MONUMENT FOUND

NOTE: THIS PLAN SHOWS ONE OR MORE WITNESS POSTS
WHICH ARE NOT SET ON THE TRUE CORNER(S).

THIS PLAN SHOWS HORIZONTAL GROUND-LEVEL DISTANCES, UNLESS
OTHERWISE SPECIFIED. TO COMPUTE GRID DISTANCES, MULTIPLY
GROUND-LEVEL DISTANCES BY THE AVERAGE COMBINED FACTOR OF
0.9995022 WHICH HAS BEEN DERIVED FROM 86H1817 AND 86H1541.



THIS PLAN LIES WITHIN THE JURISDICTION OF THE
APPROVING OFFICER FOR THE CITY OF PRINCE GEORGE.
CPG File: SD100390

THE FIELD SURVEY REPRESENTED BY THIS PLAN
WAS COMPLETED ON THE 28th DAY OF MAY, 2013.
DALE KEOWN, BCLS

THIS PLAN LIES WITHIN THE REGIONAL DISTRICT OF FRASER - FORT GEORGE.

McElhanney
McElhanney Associates
Land Surveying Ltd.
Prince George, B.C.
E-mail: pgmals@mcelhanney.com
Ph: (250) 561-2229 Fax: (250) 563-1941

DL - 2003	File No. - 6095-S
CPG File No. SD100390	