

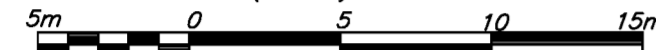
EXPLANATORY PLAN OF EASEMENT OVER PARTS OF LOTS A AND B, DISTRICT LOT 2014, CARIBOO DISTRICT, PLAN EPP31458.

PLAN EPP31459

PURSUANT TO SECTION 99(1)(e) OF THE LAND TITLE ACT.
BCGS 93G.087

INTEGRATED SURVEY AREA No. 39, PRINCE GEORGE, NAD83 (CSRS)

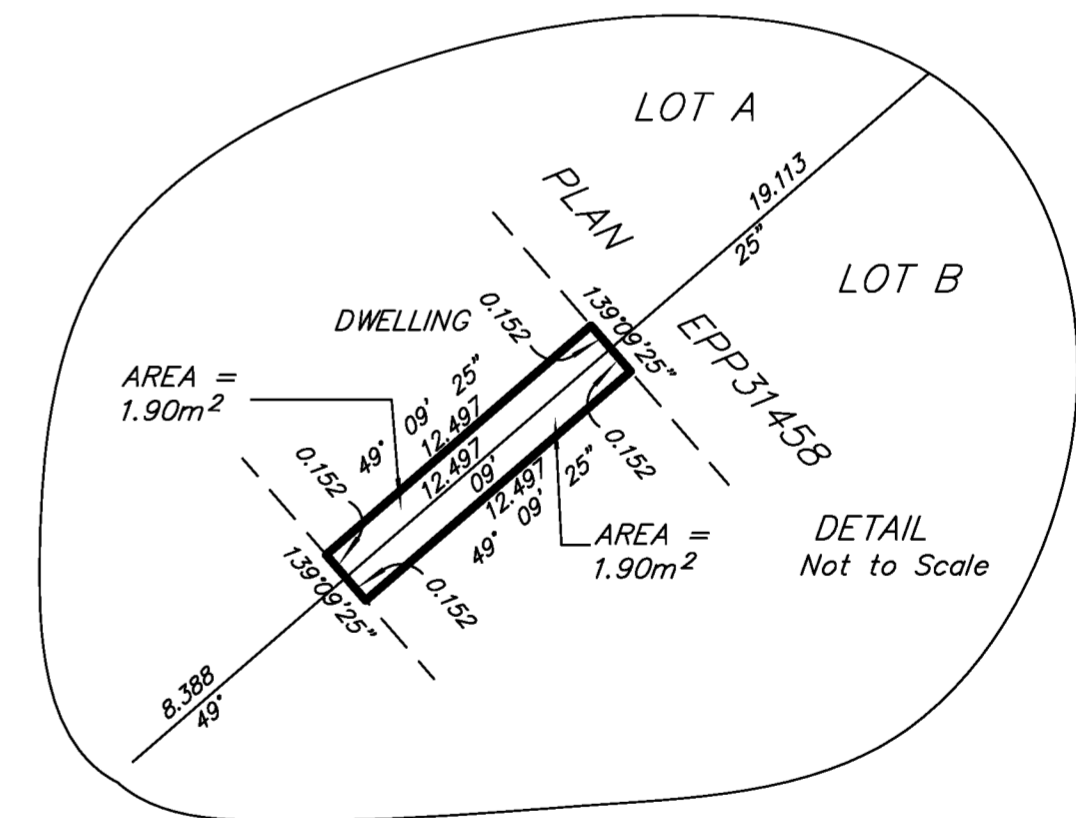
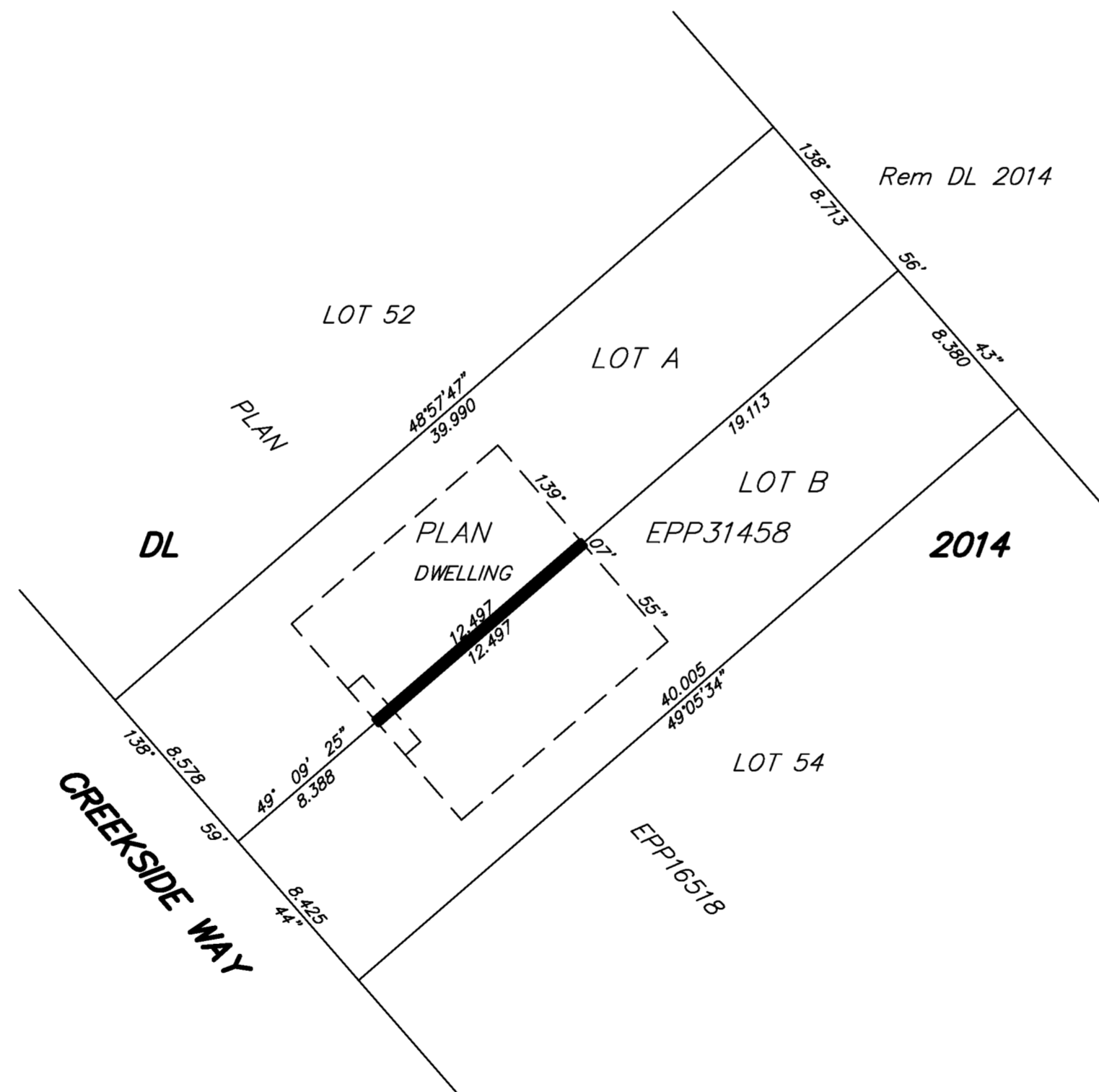
THE INTENDED PLOT SIZE OF THIS PLAN IS 560mm IN WIDTH BY 432mm IN HEIGHT (C SIZE) WHEN PLOTTED AT A SCALE OF 1:250



ALL DISTANCES ARE HORIZONTAL GROUND-LEVEL AND ARE SHOWN IN METRES AND DECIMALS THEREOF, UNLESS OTHERWISE INDICATED.

LEGEND

GRID BEARINGS ARE DERIVED FROM PREVIOUSLY INTEGRATED PLAN EPP16518.



| BOOK OF REFERENCE | |
|----------------------|--------------------|
| DESCRIPTION | AREA |
| Lot A, Plan EPP31458 | 1.90m ² |
| Lot B, Plan EPP31458 | 1.90m ² |

THIS PLAN IS BASED ON THE FOLLOWING LAND TITLE AND SURVEY AUTHORITY OF BC RECORDS: EPP31458

DALE KEOWN, BCLS
17th DAY OF JULY, 2013

THIS PLAN LIES WITHIN THE REGIONAL DISTRICT OF FRASER - FORT GEORGE.

McElhanney
McElhanney Associates
Land Surveying Ltd.
Prince George, B.C.

E-mail: pgmals@mcelhanney.com
Ph: (250) 561-2229 Fax: (250) 563-1941

DL-2014 File No. - 6117-PW