

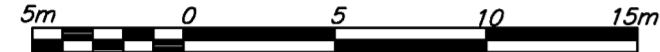
**PLAN OF SUBDIVISION OF LOT 53,
DISTRICT LOT 2014, CARIBOO DISTRICT,
PLAN EPP16518.**

PLAN EPP31458

BCGS 93G.087

INTEGRATED SURVEY AREA No. 39, PRINCE GEORGE, NAD83 (CSRS)

THE INTENDED PLOT SIZE OF THIS PLAN IS 560mm IN WIDTH BY 432mm IN HEIGHT (C SIZE) WHEN PLOTTED AT A SCALE OF 1:250

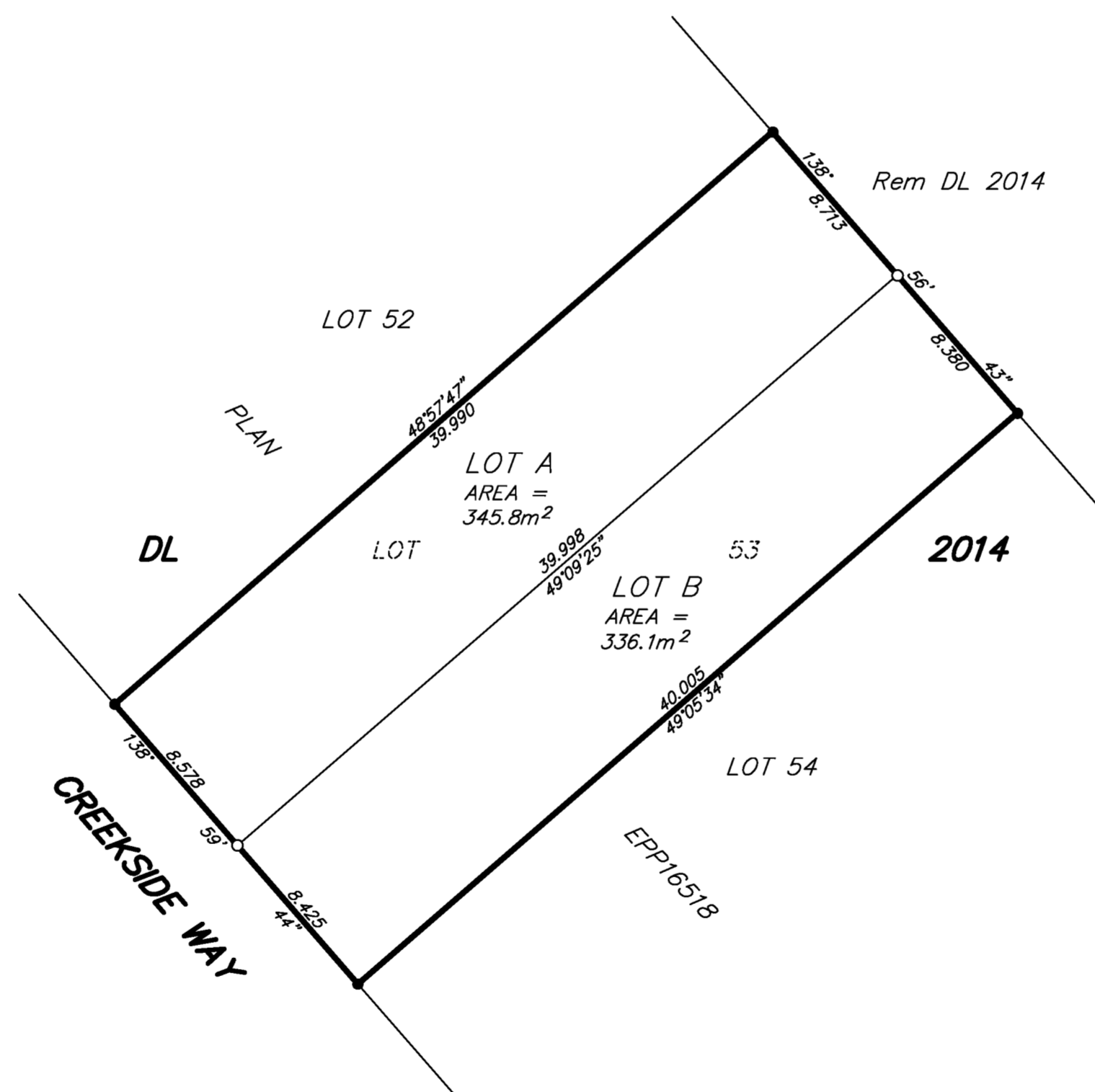


ALL DISTANCES ARE HORIZONTAL GROUND-LEVEL AND ARE SHOWN IN METRES AND DECIMALS THEREOF, UNLESS OTHERWISE INDICATED.

LEGEND

GRID BEARINGS ARE DERIVED FROM PREVIOUSLY INTEGRATED PLAN EPP16518.

- STANDARD IRON POST FOUND
- STANDARD IRON POST PLACED



THIS PLAN LIES WITHIN THE JURISDICTION OF THE APPROVING OFFICER FOR THE CITY OF PRINCE GEORGE.
CPG File: SD100433

THE FIELD SURVEY REPRESENTED BY THIS PLAN WAS COMPLETED ON THE 17th DAY OF JULY, 2013.
DALE KEOWN, BCLS

THIS PLAN LIES WITHIN THE REGIONAL DISTRICT OF FRASER - FORT GEORGE.

McElhanney
McElhanney Associates
Land Surveying Ltd.
Prince George, B.C.
E-mail: pgmals@mcelhanney.com
Ph: (250) 561-2229 Fax: (250) 563-1941

DL-2014	File No. - 6117-S
---------	-------------------