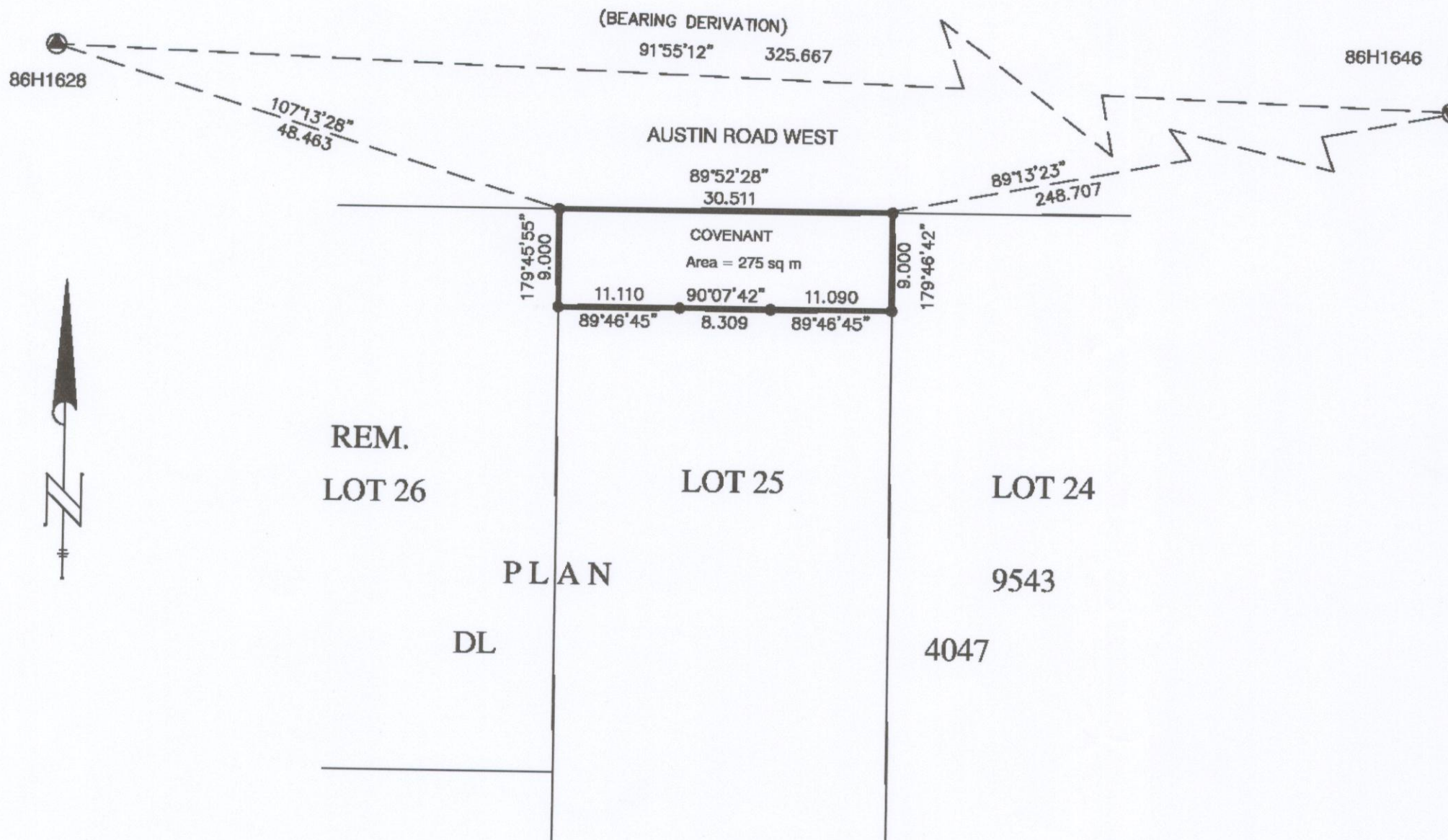


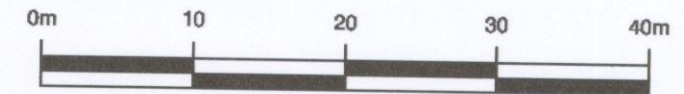
PLAN EPP3133



REFERENCE PLAN OF COVENANT OVER PART OF LOT 25, DL 4047, CARIBOO DISTRICT, PLAN 9543

Pursuant to Section 99 of the Land Title Act

BCGS 93G.087



All distances are in metres

The intended plot size of this plan is 432 mm in width by 279 mm in height when plotted at scale 1:500 (use B size sheet)

LEGEND

- Denotes Standard Iron Post Found
- ⊙ Integrated Survey Area Control Monument

Grid bearings are derived from observations between control monuments 86H1628 and 86H1646, Integrated Survey Area Number 39, City of Prince George.

This plan shows ground level measured distances. Prior to computation of U.T. M. coordinates multiply by combined factor of 0.9994848

This plan lies within the Regional District of Fraser - Fort George

The field survey represented by this plan was completed by Richard E. Gook, B.C.L.S. on the 11th day of June, 2009

R.E. GOOK & ASSOCIATES
B.C. & CANADA LAND SURVEYORS

886 VANCOUVER STREET
PRINCE GEORGE, B.C. V2L 2P5
PHONE: 250-564-4242
FAX: 250-564-5343

FILE:09-0544PG
e-mail regook@northernsurveys.com