

PLAN OF SUBDIVISION AND EASEMENT OF PART OF PARCEL 1, DISTRICT LOTS 8173, 8176, 8179, AND 8180, CARIBOO DISTRICT, PLAN BCP10189, EXCEPT PART ON PLANS BCP25199, EPP18682, EPP18683, AND EPP18684.

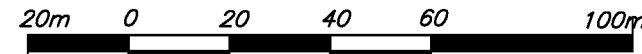
BCGS 93G.087

PURSUANT TO SECTIONS 67 AND 99(1)(e) OF THE LAND TITLE ACT

ACCESS TO LOT A BY EASEMENT ONLY.

THIS PLAN LIES WITHIN INTEGRATED SURVEY AREA No. 39, PRINCE GEORGE, NAD83 (CSRS)

THE INTENDED PLOT SIZE OF THIS PLAN IS 560mm IN WIDTH BY 864mm IN HEIGHT (D SIZE) WHEN PLOTTED AT A SCALE OF 1:1500



ALL DISTANCES ARE HORIZONTAL GROUND-LEVEL AND ARE SHOWN IN METRES AND DECIMALS THEREOF, UNLESS OTHERWISE INDICATED.

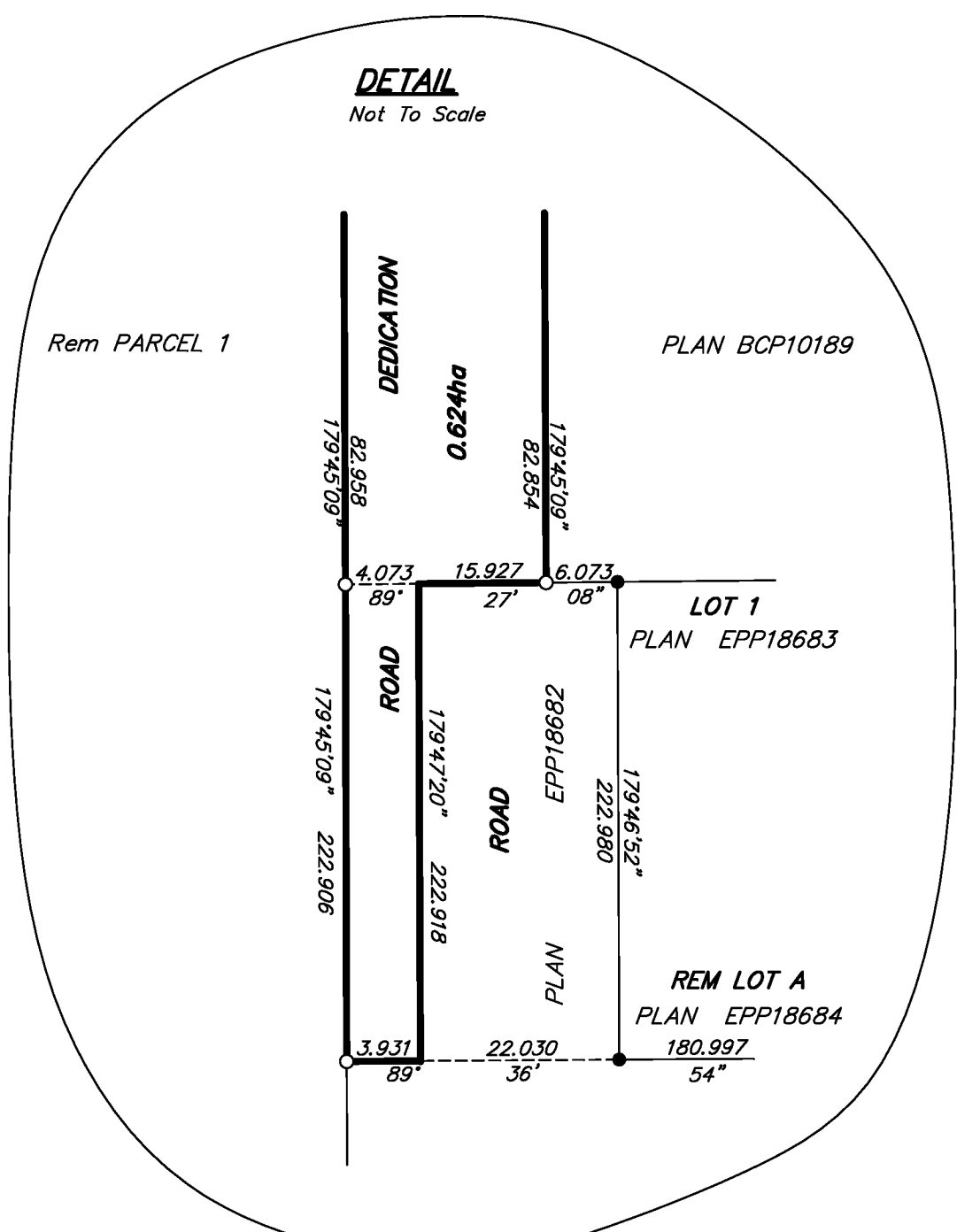
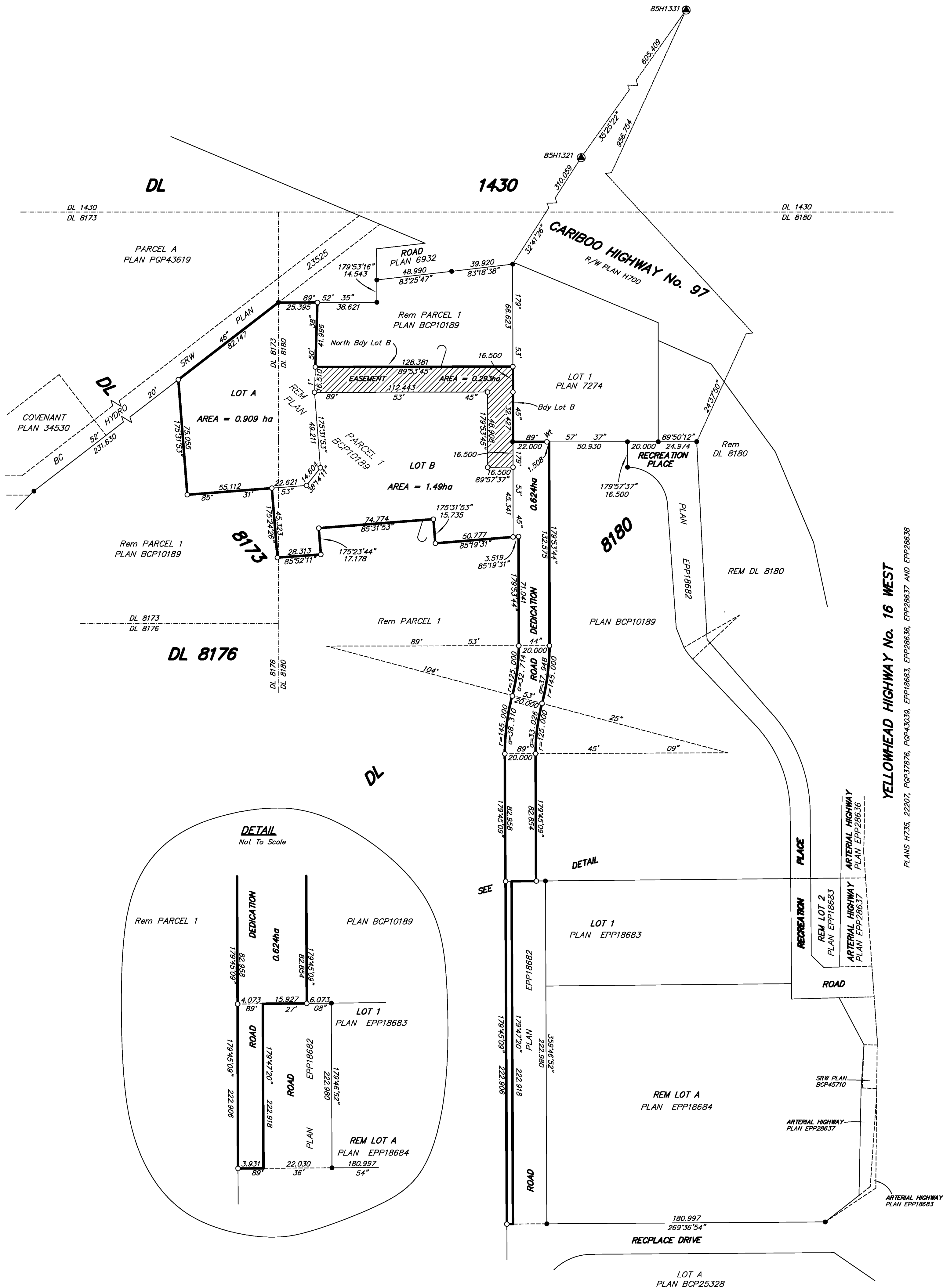
LEGEND

GRID BEARINGS ARE DERIVED FROM OBSERVATIONS BETWEEN CONTROL MONUMENTS 85H1321 AND 85H1331.

- STANDARD IRON POST FOUND
- STANDARD IRON POST PLACED
- ⊙ CONTROL MONUMENT FOUND

THIS PLAN SHOWS HORIZONTAL GROUND-LEVEL DISTANCES, UNLESS OTHERWISE SPECIFIED. TO COMPUTE GRID DISTANCES, MULTIPLY GROUND-LEVEL DISTANCES BY THE AVERAGE COMBINED FACTOR OF 0.9992134 WHICH HAS BEEN DERIVED FROM 85H1321.

NOTE: THIS PLAN SHOWS ONE OR MORE WITNESS POSTS WHICH ARE NOT SET ON THE TRUE CORNER(S).



YELLOWHEAD HIGHWAY No. 16 WEST
PLANS H735, 22207, PGP37876, PGP43039, EPP18683, EPP28636, EPP28637 AND EPP28638

THIS PLAN LIES WITHIN THE JURISDICTION OF THE APPROVING OFFICER FOR THE MINISTRY OF TRANSPORTATION AND INFRASTRUCTURE.
THIS PLAN LIES WITHIN THE JURISDICTION OF THE APPROVING OFFICER FOR THE CITY OF PRINCE GEORGE.
CPG FILE: SD100431
ACCESS TO LOT A BY EASEMENT ONLY
THE FIELD SURVEY REPRESENTED BY THIS PLAN WAS COMPLETED ON THE 21st DAY OF MAY, 2013.
DALE KEOWN, BCLS
THIS PLAN LIES WITHIN THE REGIONAL DISTRICT OF FRASER - FORT GEORGE.

McElhanney
McElhanney Associates
Land Surveying Ltd.
Prince George, B.C.
E-mail: pgmalls@mcElhanney.com
Ph: (250) 561-2229 Fax: (250) 563-1941

DL - 8180	File No. - 6090-S
CPG FILE: SD100431	Rev 2