

REFERENCE PLAN OF EASEMENT WITHIN LOTS 1 TO 6 INCLUSIVE AND LOTS 43 TO 53 INCLUSIVE, DL 2003, CARIBOO DISTRICT, PLAN EPP31288.

PLAN EPP31292

PURSUANT TO SECTION 99(1)(e) OF THE LAND TITLE ACT.

BCGS 93G.087

THIS PLAN LIES WITHIN INTEGRATED SURVEY AREA No. 39, PRINCE GEORGE, NAD83 (CSRS) 4.0.0.BC.1

THE INTENDED PLOT SIZE OF THIS PLAN IS 560mm IN WIDTH BY 864mm IN HEIGHT (D SIZE) WHEN PLOTTED AT A SCALE OF 1:500

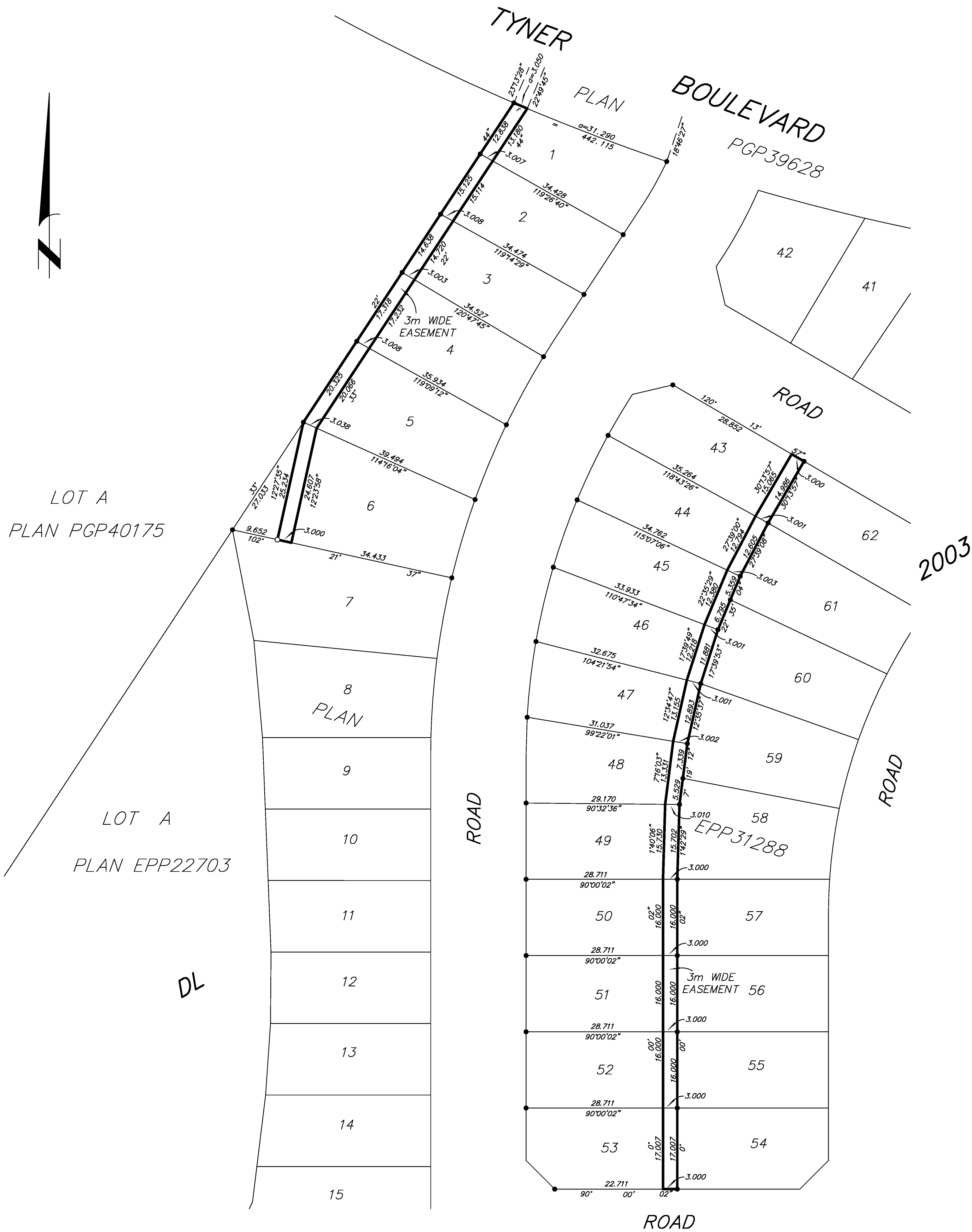


ALL DISTANCES ARE SHOWN IN METRES AND DECIMALS THEREOF, UNLESS OTHERWISE INDICATED.

LEGEND

GRID BEARINGS ARE DERIVED FROM PREVIOUSLY INTEGRATED PLAN EPP31288.

- DENOTES STANDARD IRON POST FOUND
- DENOTES STANDARD IRON POST PLACED



BOOK OF REFERENCE			
DESCRIPTION	AREA	DESCRIPTION	AREA
LOT 1, PLAN EPP31288	39.0m ²	LOT 46, PLAN EPP31288	36.1m ²
LOT 2, PLAN EPP31288	45.4m ²	LOT 47, PLAN EPP31288	39.0m ²
LOT 3, PLAN EPP31288	44.0m ²	LOT 48, PLAN EPP31288	39.2m ²
LOT 4, PLAN EPP31288	51.8m ²	LOT 49, PLAN EPP31288	47.2m ²
LOT 5, PLAN EPP31288	60.6m ²	LOT 50, PLAN EPP31288	48.0m ²
LOT 6, PLAN EPP31288	74.4m ²	LOT 51, PLAN EPP31288	48.0m ²
LOT 43, PLAN EPP31288	45.1m ²	LOT 52, PLAN EPP31288	48.0m ²
LOT 44, PLAN EPP31288	38.1m ²	LOT 53, PLAN EPP31288	51.0m ²
LOT 45, PLAN EPP31288	36.8m ²		

THE FIELD SURVEY REPRESENTED BY THIS PLAN WAS COMPLETED ON THE 1st DAY OF APRIL, 2014. DALE KEOWN, BCLS 468

THIS PLAN LIES WITHIN THE REGIONAL DISTRICT OF FRASER - FORT GEORGE.

McElhanney
 McElhanney Associates
 Land Surveying Ltd.
 Prince George, B.C.
 E-mail: pgmats@mcElhanney.com
 Ph: (250) 561-2229 Fax: (250) 563-1941

DL - 2003	File No. - 6007-E
CPG File: SD100376	