

**REFERENCE PLAN TO ACCOMPANY A COVENANT  
OVER PARTS OF LOTS 25 TO 41 INCLUSIVE,  
DISTRICT LOT 2003, CARIBOO DISTRICT,  
PLAN EPP31288.**

**PLAN EPP31291**

PURSUANT TO SECTION 99(1)(e) OF THE LAND TITLE ACT.

BCGS 936.087

THIS PLAN LIES WITHIN INTEGRATED SURVEY AREA  
No. 39, PRINCE GEORGE, NAD83 (CSRS) 4.0.0.BC.1

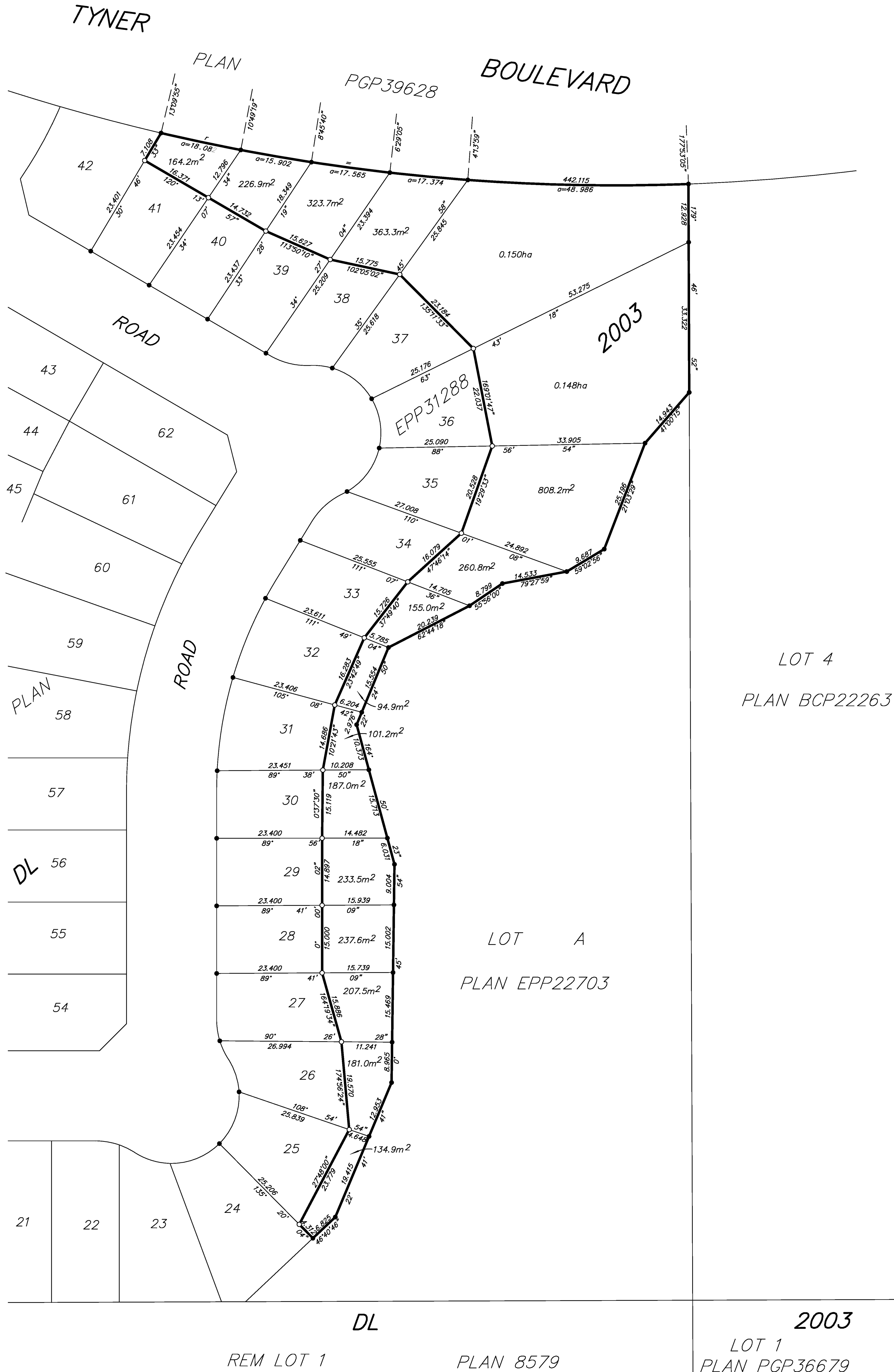
THE INTENDED PLOT SIZE OF THIS PLAN IS 560mm IN WIDTH BY  
864mm IN HEIGHT (D SIZE) WHEN PLOTTED AT A SCALE OF 1:500  
10m 0 10 20 30 40m

ALL DISTANCES ARE SHOWN IN METRES AND  
DECIMALS THEREOF, UNLESS OTHERWISE INDICATED.

**LEGEND**

GRID BEARINGS ARE DERIVED FROM PREVIOUSLY  
INTEGRATED PLAN EPP31288.

● DENOTES STANDARD IRON POST FOUND  
○ DENOTES STANDARD IRON POST PLACED



THE FIELD SURVEY REPRESENTED BY THIS PLAN  
WAS COMPLETED ON THE 1st DAY OF APRIL, 2014.  
DALE KEOWN, BCLS 468

THIS PLAN LIES WITHIN THE REGIONAL DISTRICT  
OF FRASER - FORT GEORGE.

**McElhanney**  
McElhanney Associates  
Land Surveying Ltd.  
Prince George, B.C.  
E-mail: pgmats@mcElhanney.com  
Ph: (250) 561-2229 Fax: (250) 563-1941

|                    |                     |
|--------------------|---------------------|
| DL - 2003          | File No. - 6007-COV |
| CPG File: SD100376 |                     |